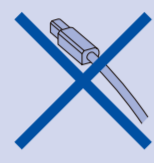


Start Here

Important

DO NOT connect the USB cable yet.



Illustrations in this Quick Setup Guide are based on the DCP-135C.

Unpack the machine and check the components

1

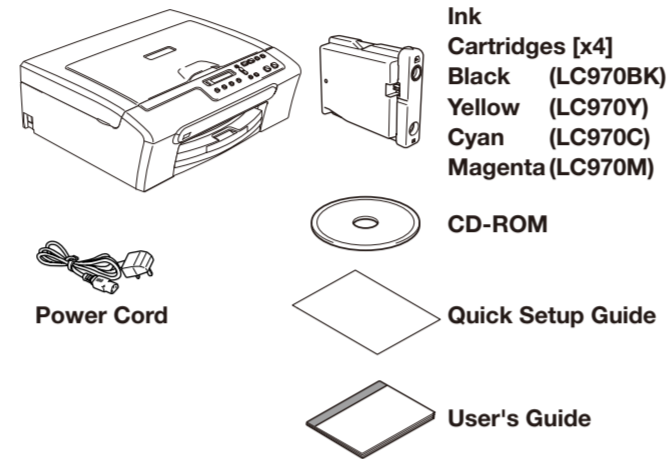
Note

- The components of your box may differ.
- Save all packing materials and the carton in case for any reason you must ship your machine.
- A USB cable is not included. You need to purchase a USB 2.0 cable that is no longer than 2 metres.

a. Remove the protective tape and film.

b. Remove the foam bag containing the ink cartridges from on top of the paper tray.

c. Make sure you have all components.



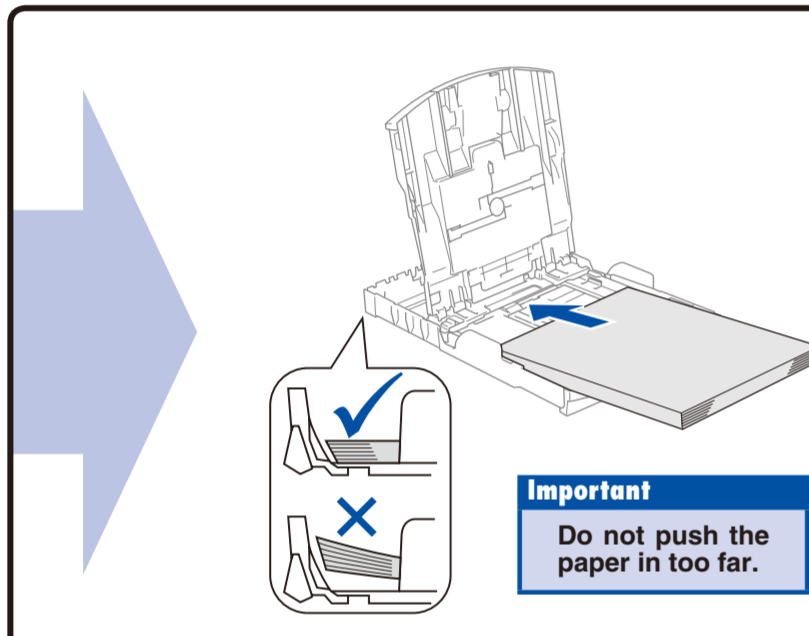
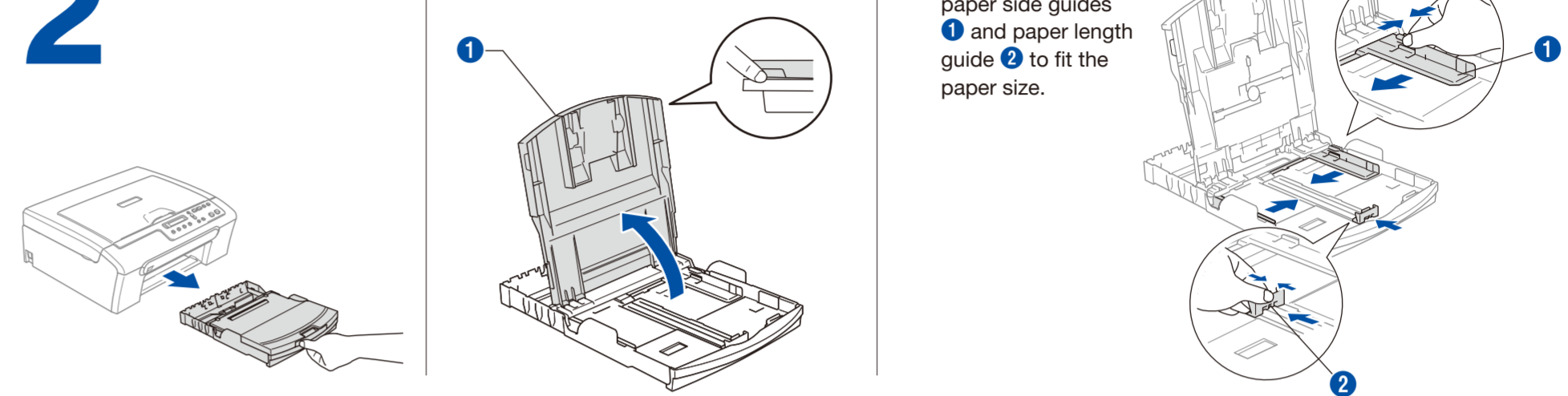
Load plain A4 paper

2

a. Pull out the paper tray.

b. Lift the output paper tray cover **1**.

c. Press and slide the paper side guides **1** and paper length guide **2** to fit the paper size.

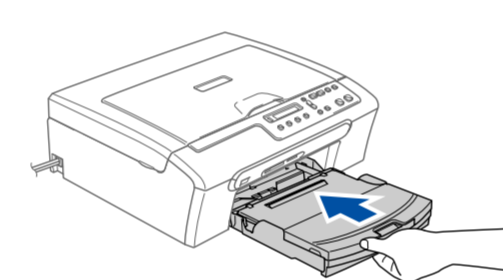


d. Fan the stack of paper well.

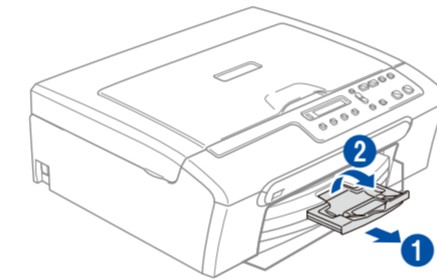
e. Gently put the paper into the paper tray. Check that the paper is flat in the tray.

f. Make sure that the paper side guides and paper length guide touch the edges of the paper.

g. Close the output paper tray cover and slowly push the paper tray back into the machine.



h. Pull out the paper support **1** until it clicks, and then unfold the paper support flap **2**.



Connect the power cord

3

a. Connect the power cord.

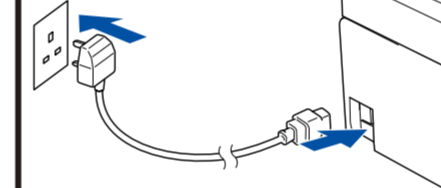
Warning
The machine must be fitted with an earthed/fused plug.

Important

DO NOT connect the USB cable yet.

Note

The control panel warning LED will stay on until you have installed the ink cartridges.



Set the language

4

a. When the LCD shows this message, press OK.

Select Language

↓

Press OK Key

b. Press ▲ or ▼ to choose your language and press OK.

English

↓

Select ▲/▼ & OK

c. Press ▲ (Yes) to confirm the language setting.

Note

If you set the wrong language, you can change it again after setting the date and time. (For details see Changing LCD language in Appendix B of the User's Guide.)

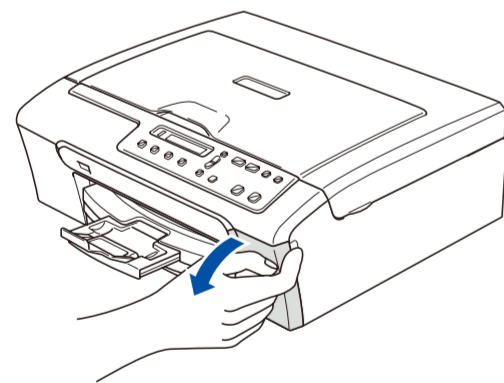
Install the ink cartridges

5

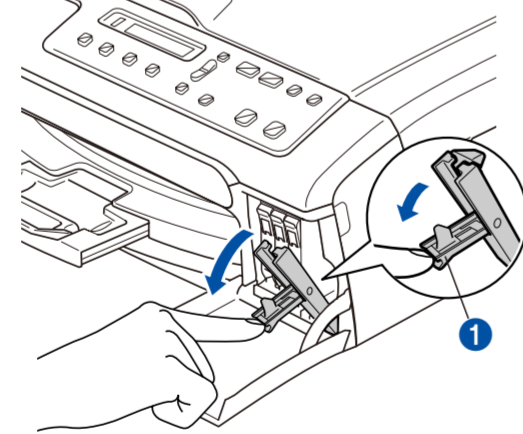
a. The LCD shows this message:

No Cartridge

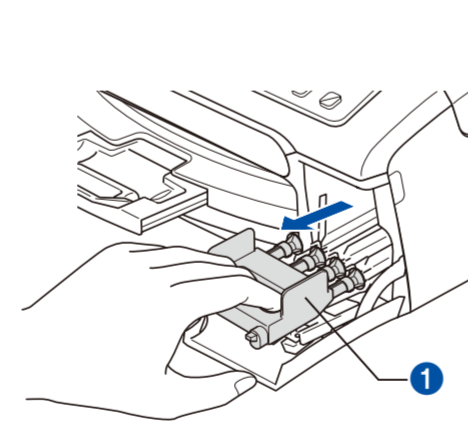
b. Open the ink cartridge cover.



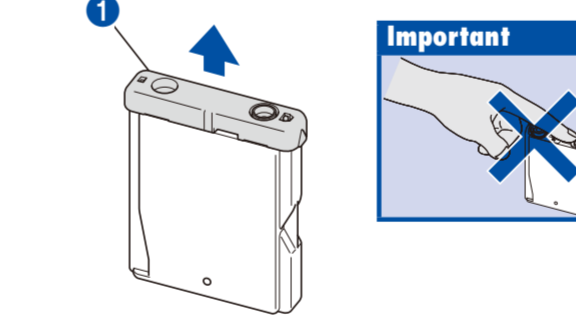
c. Pull all the lock release levers **1** down.



d. Remove the yellow protective part **1**.



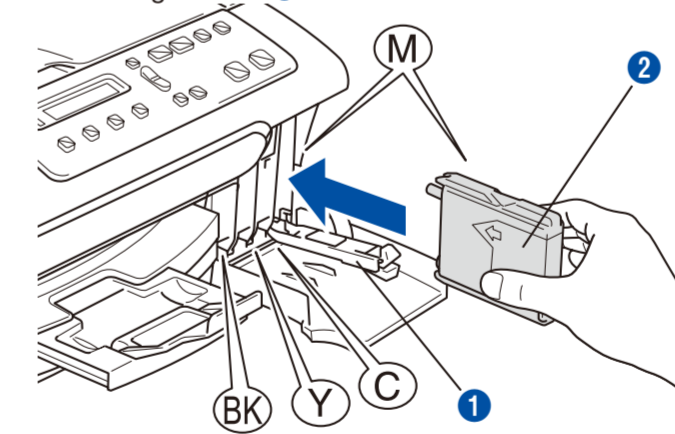
e. Unpack the ink cartridge. Remove the protective yellow cap **1** if it is still attached.



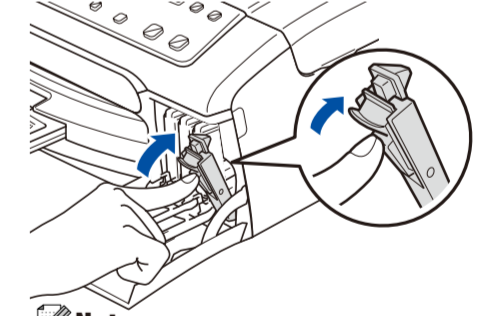
Important

Warning
If ink gets in your eyes, wash them out with water at once, and if irritation occurs consult a doctor.

f. Install each ink cartridge in the direction of the arrow on the label. Take care to match the colour of the lock release lever **1** with the cartridge colour **2**.



g. Lift each lock release lever and gently push it until it clicks, and then close the ink cartridge cover.



Note

The machine prepares the ink tube system. This process will take approximately four minutes.

Check the print quality

6

a. When the preparation process has finished, the LCD shows this message.

Set Paper and

↓

Press Start

Press Colour start.

b. Check the quality of the four colour blocks **1** on the sheet. (black/yellow/cyan/magenta)



If all lines are clear and visible, press ▲ (Yes) to finish the quality check.

If you can see missing short lines, press ▼ (No) and answer the LCD questions.

OK



Poor



Set the LCD contrast (if needed)

7

a. Press Menu.

b. Press ▲ or ▼ to choose 0. Initial Setup, and then press OK.

c. Press ▲ or ▼ to choose 2. LCD Contrast, and then press OK.

d. Press ▲ or ▼ to choose Dark or Light.

e. Press OK and then Stop/Exit.

Set the date and time

8

a. Press Menu.

b. Press ▲ or ▼ to choose 0. Initial Setup, and then press OK.

c. Press ▲ or ▼ to choose 1. Date&Time, and then press OK.

d. Press ▲ repeatedly to enter the last two digits of the year, and then press OK.

Year: 2007

(e.g. Enter 07 for 2007.)

e. Repeat for Month and Day, and Hour and Minute in 24-hour format.

f. Press Stop/Exit.

Note

If you make a mistake and want to start again, press Stop/Exit to go back to step a.



Turn the sheet over.

For Windows®

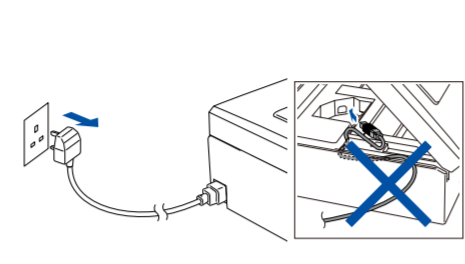
Before you install

9 a. Make sure that your computer is ON and you are logged on with Administrator rights.

Important

- DO NOT connect the USB cable yet.
- Close any applications.
- Make sure there are no memory cards or USB Flash memory drive inserted.
- The screen may differ depending on the operating system.
- The supplied CD-ROM includes the ScanSoft™ PaperPort™ 11SE.
- This software supports Windows® 2000 (SP4 or greater), XP (SP2 or greater), XP Professional x64 Edition and Windows Vista™ only. Update to the latest Windows® Service Pack before installing MFL-Pro Suite.
- For Windows Vista™, when the User Account Control screen appears, click **Allow**.

b. Disconnect the machine.



Install MFL-Pro Suite

10 a. Insert the supplied CD-ROM into your CD-ROM drive. Choose your language.

Note
If the Brother screen does not appear automatically, go to My Computer/Computer, double click the CD-ROM icon, and then double click Start.exe.

Connect the USB cable

11 a. Lift the scanner cover until it locks securely into the open position.

b. Click **Install MFL-Pro Suite**, and click **Yes** if you accept the license agreements.

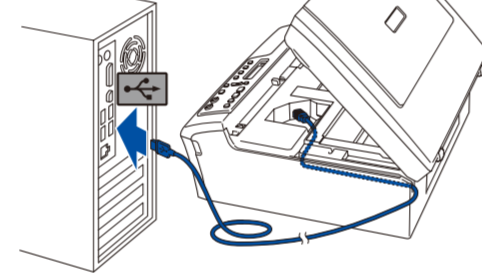


c. Follow the on-screen instructions until this screen appears:



b. Insert the USB cable into the USB socket marked with a symbol. The USB socket is inside the machine as shown right.

c. Carefully guide the USB cable into the cable channel and out the back of the machine. Connect the cable to your computer.



Important

- DO NOT connect the machine to a USB port on a keyboard or a non-powered USB hub. Connect the machine directly to your computer.
- Make sure that the cable does not restrict the cover from closing, or an error may occur.

d. Lift the scanner cover to release the lock **1**. Gently push the scanner cover support down **2** and close the scanner cover **3**.

Connect the power cord

12 a. Connect the power cord.

The installation will continue automatically.

Important

DO NOT cancel any of the screens. It may take a few minutes for installation to complete.

b. When the On-Line Registration screen appears, make your selection and follow the on-screen instructions.

Finish and restart

13 a. Click **Finish** to restart your computer.

Finish The installation is now complete.

Note
After restarting the computer, the Installation Diagnostics runs automatically. If the installation is unsuccessful, the installation results window appears. Follow the on-line help and FAQs in **Start/All Programs (Programs)/Brother/DCP-XXXX**.

Install FaceFilter Studio (Optional)

14 FaceFilter Studio is an easy-to-use borderless photo printing application for Windows.

Important

- The computer must be connected to the internet.
- The machine must be ON and connected to the computer.

a. Open the main menu again by ejecting and then reinserting the CD-ROM or by double-clicking the start.exe program from the root folder.

b. The CD-ROM main menu will appear. Choose your language and then click **Install Other Driver or Utilities**.

c. Click the **FaceFilter Studio** button to install.

Install FaceFilter Studio Help

15 a. Go to **Start/All Programs/FaceFilter Studio** on your computer.

b. Click the button on the upper right corner of the screen, and then click **Check for Updates** to go to the updates web site.

c. Click the **Download** button and choose a folder to save the file in.

d. Close FaceFilter Studio, double-click the downloaded file program from the folder you specified, and then follow the on-screen instructions to install.

Note
To view **FaceFilter Studio Help**, go to **Start/All Programs/FaceFilter Studio/FaceFilter Studio Help** on your computer.

For Mac OS® X

Before you install

9 Make sure your machine is connected the power and your Macintosh® is ON.

Important

- DO NOT connect the USB cable yet.
- Close any applications.
- Make sure there are no media cards in the media drive of the machine.
- For Mac OS® X 10.2.0 to 10.2.3 users, upgrade to Mac OS® X 10.2.4 or greater. (For the latest information for Mac OS® X, visit <http://solutions.brother.com>)

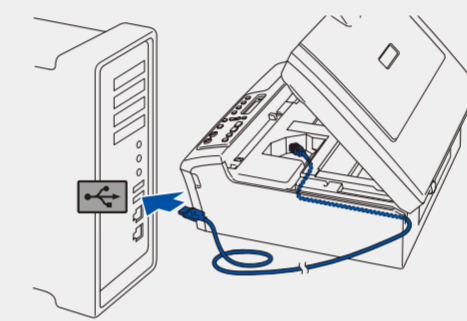
Connect the USB cable

10 a. Lift the scanner cover until it locks securely into the open position.

b. Insert the USB cable into the USB socket marked with a symbol. The USB socket is inside the machine as shown below.

c. Carefully guide the USB cable into the cable channel and out the back of the machine.

d. Connect the cable to your Macintosh®.



Important

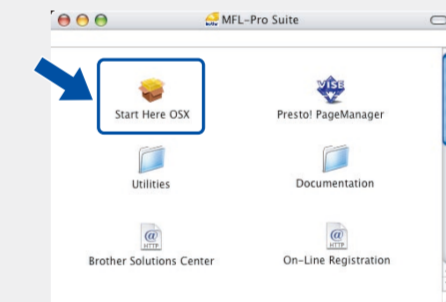
- DO NOT connect the machine to a USB port on a keyboard or a non-powered USB hub. Connect the machine directly to your Macintosh®.
- Make sure that the cable does not restrict the cover from closing, or an error may occur.

e. Lift the scanner cover to release the lock **1**. Gently push the scanner cover support down **2** and close the scanner cover **3**.

Install MFL-Pro Suite

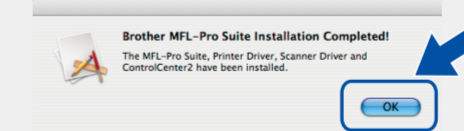
11 a. Insert the supplied CD-ROM into your CD-ROM drive.

b. Double-click the **Start Here OSX** icon.



Note
It may take a few minutes for installation to complete. After the installation, click **Restart**.

c. Click **OK**.



For Mac OS® X 10.3.x or greater users: Go to step 12.

d. For Mac OS® X 10.2.4 to 10.2.8 users: Click **Add** and then choose **USB**.

e. Choose your model name, and then click **Add**.

f. Quit **Print Center**.

Install Presto! PageManager

12 When Presto!® PageManager® is installed, OCR capability is added to Brother ControlCenter2. With Presto PageManager, you can easily scan, share and organize photos and documents.

a. Double click the **Presto! PageManager** icon and follow the on-screen instructions.

Finish
The installation is now complete.