



## Start Here

### WARNING

WARNING indicates a potentially hazardous situation which, if not avoided, could result in death or serious injuries.

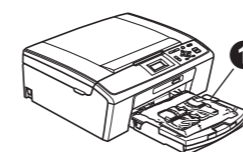
## 1 Unpack the machine and check the components

# 1

### Note

- The components of your box may differ depending on your country.
- Save all packing materials and the box in case for any reason you must ship your machine.
- A USB cable is not included. Please make sure you use a USB 2.0 cable (Type A/B) that is no more than 6 feet (2 meters) long (cable not included).
- Your machine has a USB interface that is compatible with the USB 2.0 specification. This interface is also compatible with Hi-Speed USB 2.0; however, the maximum data transfer rate will be 12 Mbits/s. The machine can also be connected to a computer that has a USB 1.1 interface.

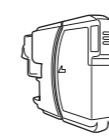
- Remove the protective tape and film covering the machine, and also from the LCD.
- Remove the plastic bag ❶ containing the ink cartridges from on top of the paper tray.
- Make sure you have all components.



Accessory Order Form

Quick Setup Guide

Safety and Legal booklet



Starter Ink Cartridges [x4]  
Black  
Yellow  
Cyan  
Magenta

Installation CD-ROM  
Documentation CD-ROM

Basic User's Guide

Product Registration Sheet (USA only)

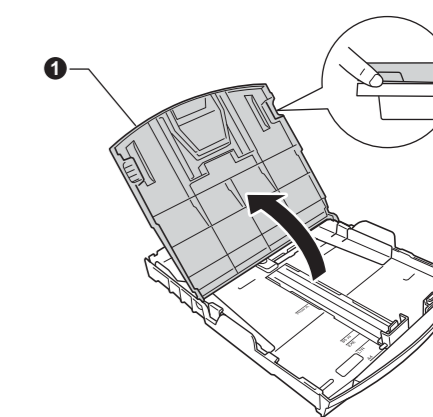
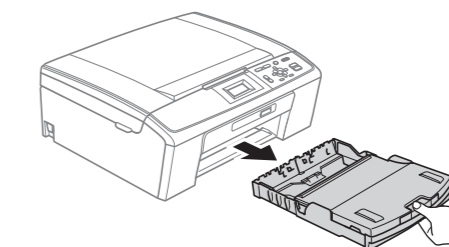
### WARNING

Plastic bags are used in the packaging of your machine. To avoid danger of suffocation, please keep these bags away from babies and children.

## 2 Load plain Letter/A4 paper

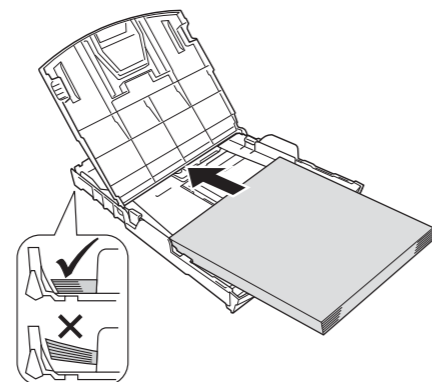
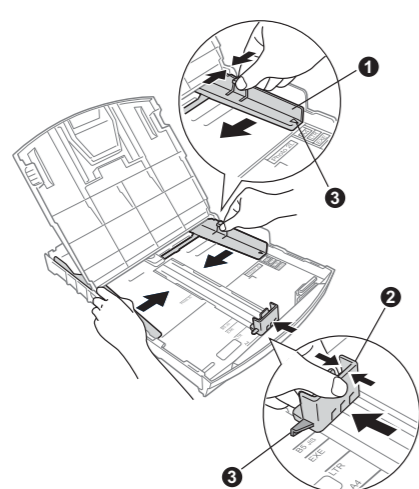
# 2

- Pull out the paper tray.
- Lift the output paper tray cover ❶.



- Press and slide the paper side guides ❶ and paper length guide ❷ to fit the paper size.

Make sure that the triangular marks ❸ on the paper side guides ❶ and paper length guide ❷ line up with the mark for the paper size you are using.

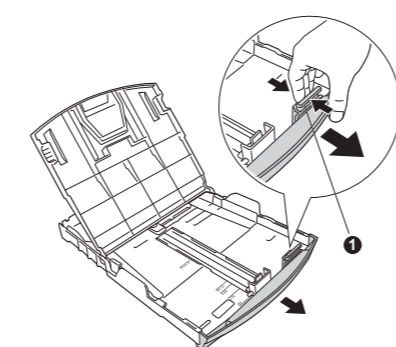


**IMPORTANT**  
DO NOT push the paper in too far.

- Fan the stack of paper well.
- Gently put the paper into the paper tray. Check that the paper is flat in the tray.

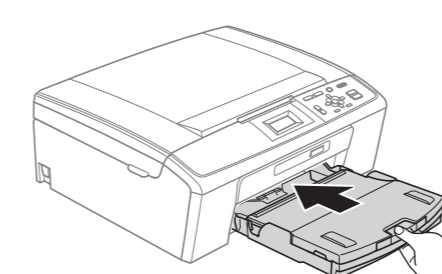
### Note

When you use Legal size paper, press and hold the universal guide release button ❶ as you slide out the front of the paper tray.

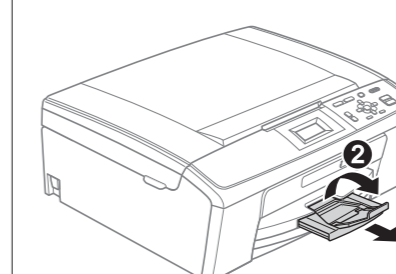


- Gently adjust the paper side guides to the paper with both hands. Make sure the paper side guides touch the edges of the paper.

- Close the output paper tray cover and slowly push the paper tray back into the machine.



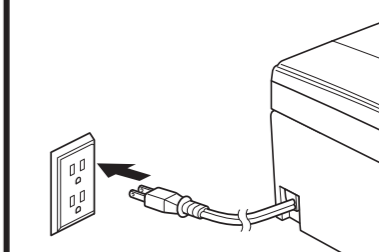
- Pull out the paper support ❶ until it clicks, and then unfold the paper support flap ❷.



## 3 Connect the power cord

# 3

- Connect the power cord.



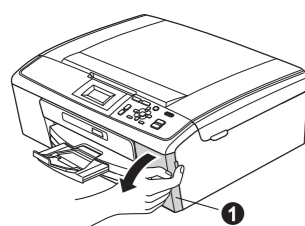
**IMPORTANT**  
DO NOT connect the USB cable yet.

**Note**  
The Warning LED on the control panel will stay on until you have installed the ink cartridges.

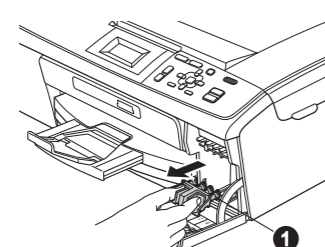
## 4 Install the ink cartridges

# 4

- The LCD shows No Ink Cartridge.
- Open the ink cartridge cover ❶.

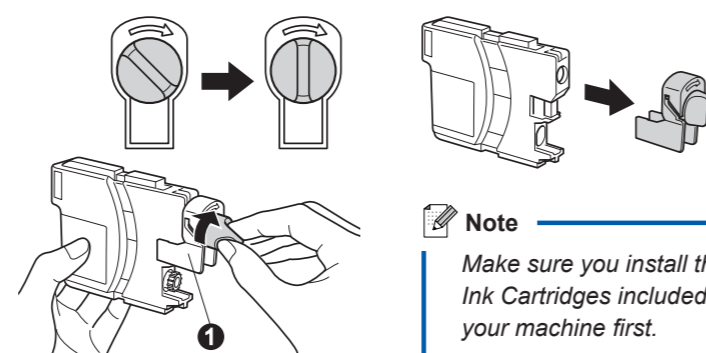


- Remove the green protective part ❶.



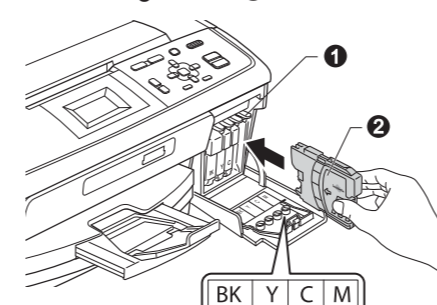
**Note**  
Do not throw away the green protective part. You will need it if you transport the machine.

- Unpack the ink cartridge. Turn the green knob on the protective yellow cap clockwise until it clicks to release the vacuum seal, then remove the cap ❶.

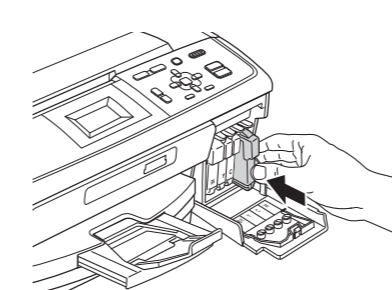


**Note**  
Make sure you install the Starter Ink Cartridges included with your machine first.

- Install each ink cartridge in the direction of the arrow on the label. Take care to match the color of the lever ❶ with the cartridge color ❷.



- Gently push the ink cartridge until it clicks. After all the ink cartridges are installed close the ink cartridge cover.

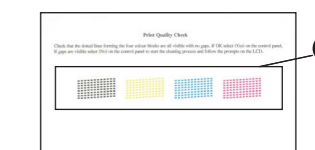


**Note**  
The machine will prepare the ink tube system for printing. This process will take approximately four minutes. Do not turn off the machine.

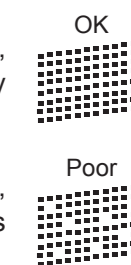
## 5 Check the print quality

# 5

- When the preparation process has finished, the LCD shows Set Paper and Press Start. Press Color Start.
- Check the quality of the four color blocks ❶ on the sheet. (black/yellow/cyan/magenta)



- If all lines are clear and visible, press **OK** (Yes) to finish the quality check.
- If you can see missing short lines, press **No** (No) and follow the steps on the LCD.



## 6 Choose your language (if needed)

# 6

- Press Menu.
- Press **▲** or **▼** to choose Initial Setup. Press **OK**.
- Press **▲** or **▼** to choose Local Language. Press **OK**.
- Press **▲** or **▼** to choose your language. Press **OK**.
- Press **Stop/Exit**.

## 7 Set the LCD contrast (if needed)

# 7

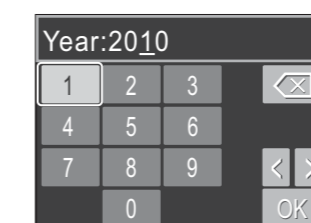
- Press Menu.
- Press **▲** or **▼** to choose General Setup, and then press **OK**.
- Press **▲** or **▼** to choose LCD Settings, and press **OK**.
- Press **▲** or **▼** to choose LCD Contrast, and then press **OK**.
- Press **◀** or **▶** to choose the contrast level, and then press **OK**.
- Press **Stop/Exit**.

## 8 Set the date and time

# 8

- Press Menu.
- Press **▲** or **▼** to choose Initial Setup, and then press **OK**.
- Press **▲** or **▼** to choose Date&Time, and then press **OK**.

- To enter the last two digits of the year, press **▲**, **▼**, **◀** or **▶** to select a number and press **OK**. To save the year, press **▲**, **▼**, **◀** or **▶** to select **OK** and press **OK**.



(e.g. Enter 10 for 2010.)

- Repeat for Month and Day.
- Press **▲** or **▼** to choose 12h Clock Or 24h Clock, and then press **OK**.
- Enter the time, and then press **OK**.
- (12h Clock only) Press **▲** or **▼** to choose AM or PM, and then press **OK**.
- Press **Stop/Exit**.

**Note**  
If you make a mistake and want to start again, press **Stop/Exit** to go back to step a.



Turn the sheet over.



## For Windows®

### Before you install

- 9** a. Make sure that your computer is ON and you are logged on with Administrator rights.

**IMPORTANT**

- DO NOT connect the USB cable yet.
- For the latest drivers and information, visit <http://solutions.brother.com/>
- Close any applications.
- The screen may differ depending on the operating system.
- For Windows Vista® and Windows® 7, when the User Account Control screen appears, click Allow or Yes.

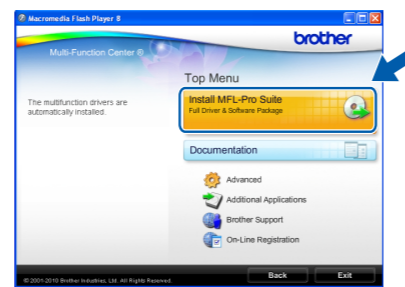
### Install MFL-Pro Suite

- 10** a. Insert the supplied installation CD-ROM into your CD-ROM drive. Choose your language.

**Note**

If the Brother screen does not appear automatically, go to My Computer (Computer), double-click the CD-ROM icon, and then double-click start.exe.

- b. Click **Install MFL-Pro Suite**, and click **Yes** if you accept the license agreements.

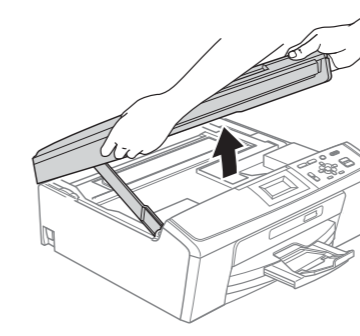


- c. Follow the on-screen instructions until this screen appears:

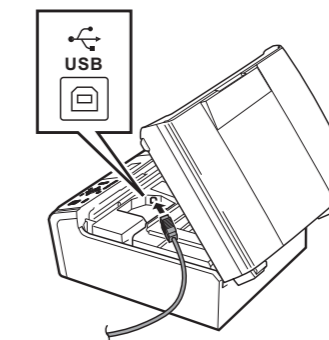


### Connect the USB cable

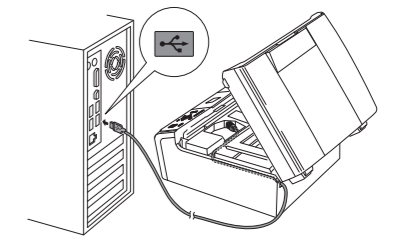
- 11** a. Lift the scanner cover until it locks securely into the open position.



- b. Connect the USB cable to the USB socket marked with a USB symbol. The USB socket is inside the machine as shown.



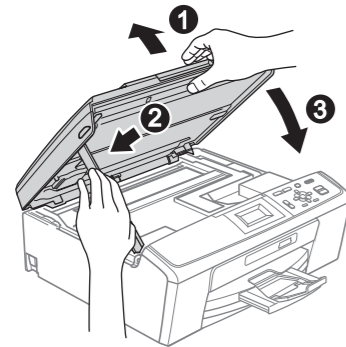
- c. Carefully route the USB cable through the trench and out the back of the machine. Connect the cable to your computer.



**IMPORTANT**

Make sure that the cable does not restrict the cover from closing, or an error may occur.

- d. Lift the scanner cover to release the lock ①. Gently push the scanner cover support down ② and close the scanner cover ③.



- e. The installation will continue automatically. The installation screens appear one after another.

**IMPORTANT**

DO NOT cancel any of the screens. It may take a few minutes for installation to complete.

- f. When the **User's Guides** screen is displayed, click **View Manuals on the Web** if you want to download the manuals and follow the on-screen instructions. You can also view the manuals on the documentation CD-ROM.

- g. When the **On-Line Registration** screen appears, make your selection and follow the on-screen instructions.

- h. If you do not want to set your machine as the Default printer, uncheck **Set as Default Printer**.

### Finish and restart

- 12** a. Click **Finish** to restart your computer.



**Note**

- If an error message appears during the software installation, run the **Installation Diagnostics** located in **start/All Programs/Brother/DCP-JXXX** (where DCP-JXXX is your model name).
- Depending on your security settings, a Windows Security or antivirus software window may appear when using the machine or its software. Please allow or permit the window to continue.

- b. In the **Check for Firmware Updates** screen, choose the firmware update setting you want and click **OK**.

**Note**

Internet access is required for the firmware update.

**Finish** The installation is now complete.

**Note**

**XML Paper Specification Printer Driver**  
The XML Paper Specification Printer Driver is the most suitable driver when printing from applications that use the XML Paper Specification documents. Please download the latest driver by accessing the Brother Solutions Center at <http://solutions.brother.com/>

## Install Optional Applications supported by Reallusion, Inc

### 13

**FaceFilter Studio** is an easy-to-use borderless photo printing application. FaceFilter Studio also lets you edit your photo data and add photo effects such as red eye reduction or skin tone enhancement. The **BookScan Enhancer** software can correct your scanned book images automatically. The **Whiteboard Enhancer** software cleans up and enhances text and images from photos taken of your whiteboard.

**IMPORTANT**

- The machine must be ON and connected to the computer.
- The computer must be connected to the internet.
- Make sure you are logged on with Administrator rights.

- a. Open the top menu again by ejecting and then reinserting the installation CD-ROM or by double-clicking the **start.exe** program from the root folder.

- b. The CD-ROM Top Menu will appear. Choose your language and then click **Additional Applications**.

- c. Click the button for the application you want to install.

- d. Go back to the Additional Applications screen to install more applications.

## Install FaceFilter Studio Help

### 14

To get instructions on how to use FaceFilter Studio, download and install FaceFilter Studio Help.

- a. Go to **start/All Programs/Reallusion/FaceFilter Studio** on your computer.

- b. Click the **?** button on the upper right corner of the screen, and then click **Check for updates** to go to the Reallusion update web page.

- c. Click the **Download** button and choose a folder to save the file in.



- d. Close FaceFilter Studio, double-click the downloaded file from the folder you specified, and then follow the on-screen instructions to install.

**Note**

To view **FaceFilter Studio Help**, go to **start/All Programs/Reallusion/FaceFilter Studio/FaceFilter Studio Help** on your computer.

## For Mac OS X

### Before you install

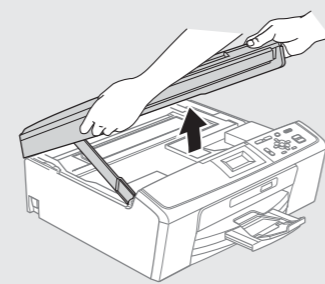
- 9** Make sure your machine is connected to the power and your Macintosh is ON. You must be logged on with Administrator rights.

**IMPORTANT**

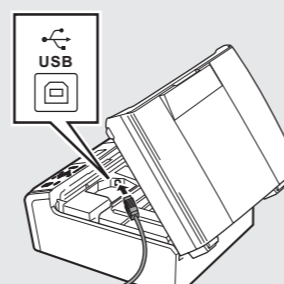
- For the latest drivers and information on the Mac OS X you are using, visit <http://solutions.brother.com/>
- For Mac OS X 10.4.0 to 10.4.10 users, upgrade to Mac OS X 10.4.11 - 10.6.x.

### Connect the USB cable

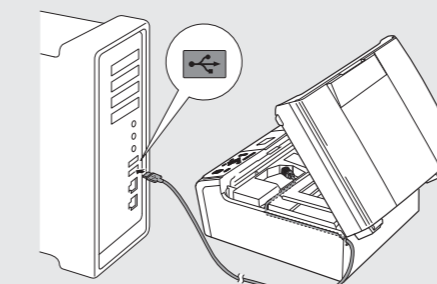
- 10** a. Lift the scanner cover until it locks securely into the open position.



- b. Connect the USB cable to the USB socket marked with a USB symbol. The USB socket is inside the machine as shown.



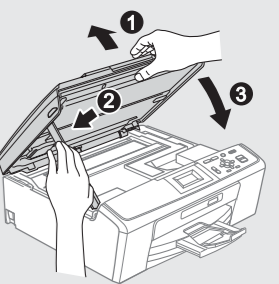
- c. Carefully route the USB cable through the trench and out the back of the machine. Connect the cable to your Macintosh.



**IMPORTANT**

- DO NOT connect the machine to a USB port on a keyboard or a non-powered USB hub. Connect the machine directly to your Macintosh.
- Make sure that the cable does not restrict the cover from closing, or an error may occur.

- d. Lift the scanner cover to release the lock ①. Gently push the scanner cover support down ② and close the scanner cover ③.



### Install MFL-Pro Suite

### 11

- a. Insert the supplied installation CD-ROM into your CD-ROM drive.

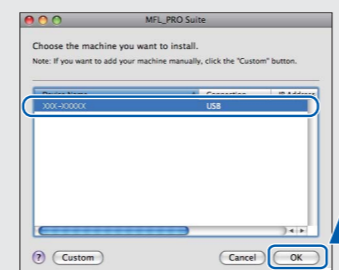
- b. Double-click the **Start Here OSX** icon.



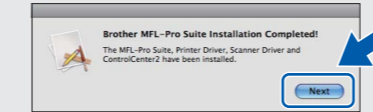
**Note**

It may take a few minutes for installation to complete. After the installation, the Brother software will search for the Brother device.

- c. Choose the machine from the list, and then click **OK**.



- d. Click **Next**.



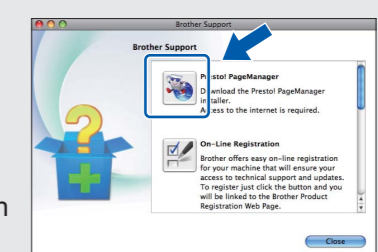
- e. When the **Brother Support** screen appears, click **Close** to finish the installation or go to step 12.

### Download and install Presto! PageManager

### 12

When Presto! PageManager is installed, OCR capability is added to Brother ControlCenter2. With Presto! PageManager, you can easily scan, share and organize photos and documents.

- a. Click the **Presto! PageManager** icon to go to the Presto! PageManager download site, and follow the on-screen instructions.



**Finish**

The installation is now complete.