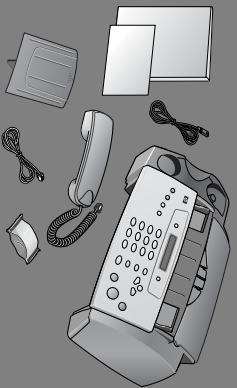


# hp fax 1010 series setup poster



C9270-90101

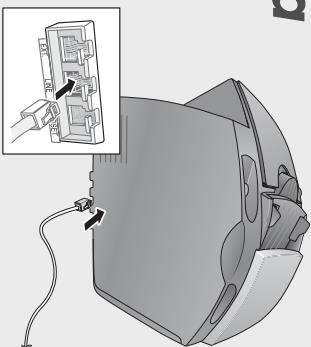


**1 a** Remove all shipping tape.

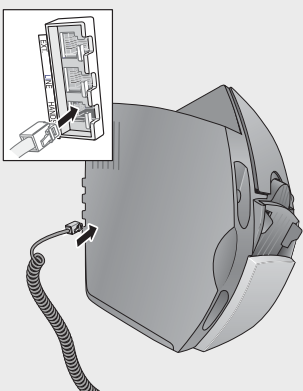


Peel off protective plastic from around LCD area and buttons.

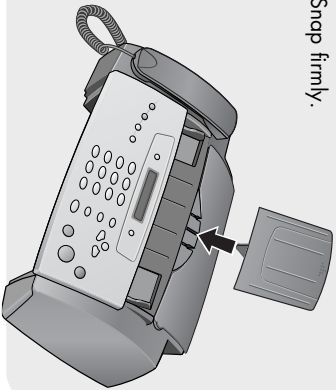
**2 a**



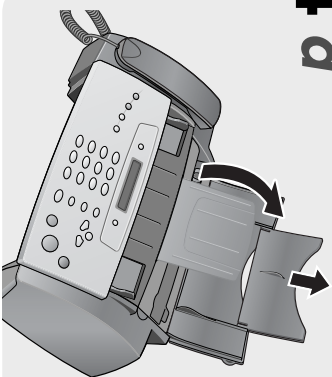
**b**



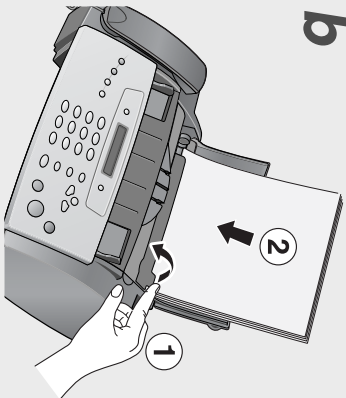
**3** Snap firmly.



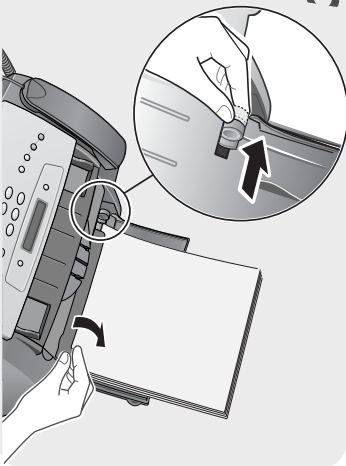
**4 a**



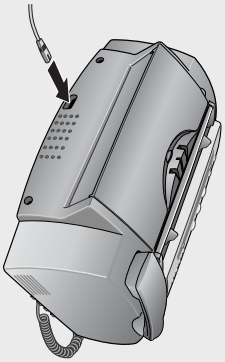
**b**



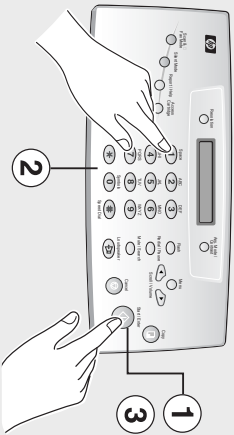
**c**



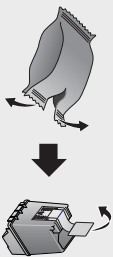
**5 a**



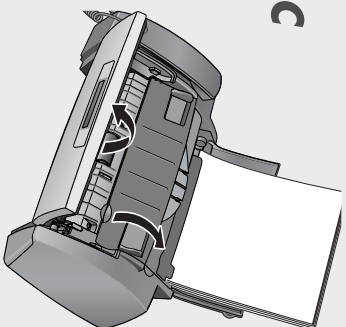
**b** Set date and time when prompted.



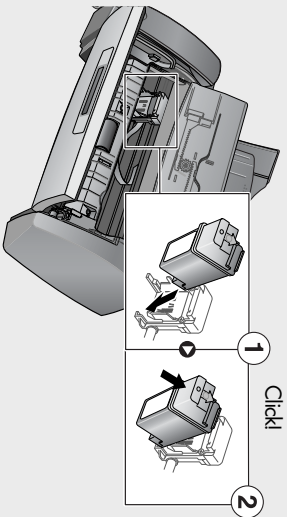
**6 a**



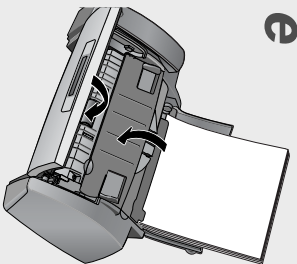
**c**



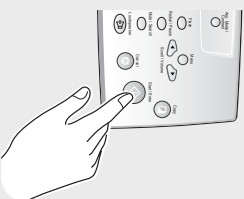
**d** Orient the copper area on the cartridge toward the back of the machine and click it in the carrier at a slight slant as shown.



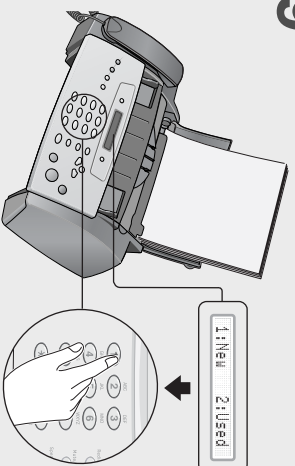
**e**



**f**



**g**



**7** Setting the fax header (your name and fax number) is required by law in many countries.

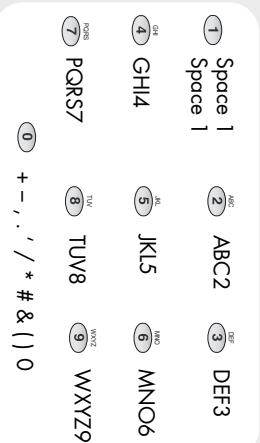
- 1 Press **Menu** repeatedly until System ID displays.
- 2 Press **Start/Enter**.  
Fax Number will display.
- 3 Press **Start/Enter**.  
The cursor will blink for you to enter the number. To enter punctuation in the number use the keys labelled Fax Number below.
- 4 Enter the number and press **Start/Enter**.

#### Fax Number



- 5 Fax Name will display.  
Press **Start/Enter**.  
The cursor will blink for you to enter the name. To enter punctuation or other special characters in the name, use the keys labelled Fax Name below.
- 6 Enter the name and press **Start/Enter**.

#### Fax Name



**8**



Press the **Ans.Mode/Contrast** button to set the answer mode.

- FAX Mode: To have the machine always answer as a fax.
- TEL Mode: To have the machine always answer as a telephone where you must manually receive faxes.

Go to Chapter 2 of the Basic Guide before selecting other Answer Modes.

[www.hp.com/support](http://www.hp.com/support)

**9**

Unless you selected TEL Mode in Step 8, review Chapter 2 of the Basic Guide.