

At your side.  
**brother**®

HL-1850/  
HL-1870N

HL-1870N HL-1850



HL-1870N shown  
with optional  
lower tray

## HL-1850 / HL-1870N

High speed laser printers with automatic duplex as standard

up to  
**18**  
ppm

Up to 18ppm



Built-in  
automatic  
duplex



Network Ready  
(Standard HL-1870N,  
optional HL-1850)



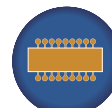
Windows & DOS  
Compatible



Mac OS  
Compatible



USB Standard



Upgradeable  
Memory



24 hour 7 day  
Online Help

up to  
**600**  
pages

Up to 600 page  
paper capacity

# The professional printing solution for stand-alone users and small workgroups

## HL-1850/ HL-1870N

The Brother HL-1800 series printers are designed to meet your professional printing requirements and combine total quality with performance and reliability. As well as outstanding quality, various economical features of the HL-1800 series printers mean real cost benefits are provided along with a professional finish to all your documents.



HL-1850



HL-1870N shown with optional lower tray

HL-1870N

## HL-1850

- Up to 18ppm print speed
- Built-in automatic duplex
- 16MB of standard memory, expandable up to 144MB
- Up to 600 sheet paper capacity (with optional tray)\*
- Easy to use control panel
- 3 Colour backlit LCD
- Easy to replace long life supplies
- Advanced Network capabilities with the optional 10/100Base TX fast Ethernet connection

## HL-1870N

- Up to 18ppm print speed
- Built-in automatic duplex
- Connectivity – 10/100 BaseTX, USB and Parallel interfaces built-in
- Up to 600 sheet paper capacity (with optional tray)\*
- Easy to use control panel
- 3 Colour backlit LCD
- Easy to replace long life supplies
- 32MB of standard memory, expandable up to 144MB

\* At 75 gsm plain paper



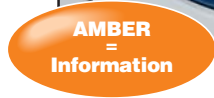
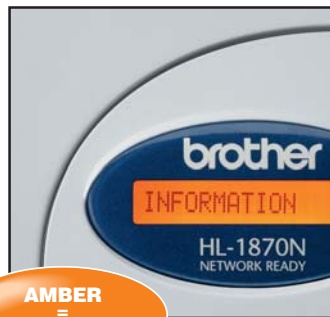
## Features

### Flexibility

As well as having built-in automatic duplex, there are three possible input sources, including standard, multi-purpose trays and an optional lower tray, giving a maximum 600 sheet capacity that allows the support of 3 different media types and sizes at any one time.

### Connectivity

To maximise the flexibility of the 1800 series printers they support most PC and Mac computing environments, and are equipped with parallel and USB ports as standard.



### Ease of use

Designed to be user friendly, the control panel is clear and simple to use. It has a 3 colour backlit LCD which changes colour so that the status of the printer can be easily recognised.

### On-line support

On-line Interactive Help feature assists you on your screen any time you need product support.





# Advanced Network Capabilities

The HL-1870N printer is highly versatile and can connect to a wide range of network environments. With the inclusion of the powerful BRAdmin Professional software you have sophisticated network and printer management for both Brother and other SNMP printers.

The BRAdmin Professional software system can play a vital role in helping to manage your network printers.

With a built-in web server, users can also manage the printer via a web browser within Windows, Mac and Unix environments.

HL-1850/  
HL-1870N

## Useful Software features

In addition to the other features that the HL-1800 series printers provide, useful software is included to help improve productivity and ease of operation of the products even more.

### Secure Print Function

Allows users to send confidential documents from their Windows applications in secure mode. Confidential documents can only be printed by entering a PIN number on the printer front panel, or by logging on to the printer using a web browser and selecting the secure print option.

### E-mail Notification

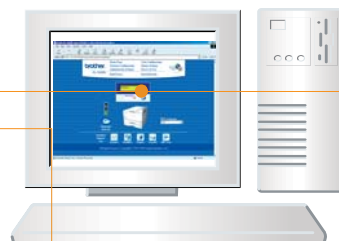
Can prevent long delays at the printer due to an empty paper tray or paper jam, etc. Will automatically send an E-mail message to an individual or a group of users informing them of the printer's status.

### Printer Deployment Wizard

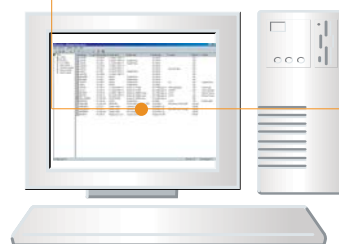
Step-by-step guide to the installation of your Brother network printer in a Windows environment.

### Quick Print Set-up

Enables changes to the printer driver settings from the task bar without having to open the properties dialogue box.



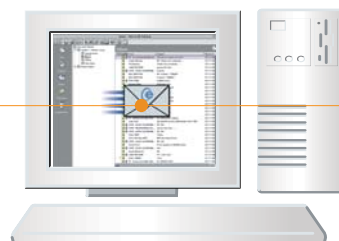
Web based Management




BRAdmin Professional



Status monitoring



e-mail notification

ENGINE		
<b>Technology</b>		Electrophotographic
<b>Print Speed A4</b>	Standard Duplex	18 pages per minute 4.25 sheets per minute
<b>First Print Time</b>		Less than 12 seconds
<b>Resolution</b>	High Quality Normal Draft	HQ1200 dpi 600 x 600 dpi 300 x 300 dpi
CONTROLLER		
<b>Processor</b>		Fujitsu MB86834 (100MHz)
<b>Memory</b>	Standard Optional	16 MB HL-1850, 32MB HL-1870N 1 DIMM (100pin) slot, (16, 32, 64, 128MB). 1 DIMM (100pin) slot, capable of holding Indicating a possible expansion up to 144 MB memory
<b>Interface</b>	Standard	This printer has as standard IEEE 1284 Parallel and USB interface
<b>Network</b>	Standard	10/100 BaseTX Ethernet (Auto Negotiation)
<b>Connectivity</b>	Protocol Management	TCP/IP, AppleTalk, IPX/SPX, NetBEUI, DLC/LLCDECLAT, Banyan VINES BRAdmin Professional Web Based Management
<b>Emulation</b>		PCL6, BR-Script3, IBM Proprinter XL, Epson FX-850
<b>Resident Fonts</b>	PCL BR-Script 3 Optional	66 scalable fonts, 12 bitmap fonts, 11 bar codes 66 fonts 136 Agfa PS3 fonts(BS-300)
SOFTWARE		
<b>Printer Driver</b>		PCL Driver for Windows® 95/98/Me, NT*4.0/2000 Professional and XP BR-Script (PPD file for Windows® 95/98/Me, NT*4.0/2000 Professional/XP and MacOS 8.6 – 9.2 and OSX 10.1)
<b>Utility</b>		Storage manager (For Windows® only) Interactive help (via CD on-line support, using on-screen guidelines and moving pictures) Driver deployment wizard 1.5 (step-by-step installation of a Brother Network printer on a networked Windows® PC)
CONTROL PANEL		
<b>Display</b>	LCD Back-lit LED	1 line of 16 characters 3 colour indicators 1 LED
<b>Switches</b>		There are 7 buttons, Go, Job Cancel, Reprint, Menu, Back and 2 Scroll Keys
PAPER HANDLING		
<b>Paper Input*</b>	Standard Multi-purpose tray Optional	Up to 250 Sheets* Up to 100 sheets*, plus envelopes and labels Total paper capacity of up to 500 sheets* can be stored, if the optional lower tray is chosen (up to 250 sheets*)
<b>Paper Output*</b>	Standard	150 sheets* face down or 50 sheets* face up can be stored in the output paper tray
<b>Duplex Unit</b>		Automatic**
MEDIA SPECIFICATIONS		
<b>Media Types</b>	This printer accepts the following media types: Standard Optional Standard	Standard Tray: Plain paper, Bond paper, Recycled Paper & Transparencies# Lower Tray: Plain paper, Bond paper, Recycled Paper & Transparencies# Multi-purpose Tray: Plain paper, Bond paper, Recycled Paper, Transparencies, Envelopes and Labels
<b>Media Weights</b>	This printer accepts the following media types: Standard Optional Standard	Standard Tray: 60 – 105gsm Lower Tray: 60 – 105gsm Multi-purpose Tray: 60 – 161gsm
<b>Media Sizes</b>	This printer accepts the following media sizes: Standard Optional Standard	Standard Tray: Cut sheet: A4, Letter, B5(JIS/ISO), A5, B6(ISO), A6, Executive, Legal Lower Tray: Cut sheet: A4, Letter, B5(JIS/ISO), A5, B6(ISO), A6, Executive, Legal Multi-purpose Tray: Custom: 69.8x116mm – 216x356mm
PRINTER DRIVER FUNCTIONS		
<b>Page Layout</b>	N in 1 Poster Watermark	This model has the ability to reduce 2, 4, 9, 16 or 25 A4 pages to print onto 1 A4 page. This model has the ability to enlarge 1 A4 page to print onto 4, 9, 16 or 25 A4 pages. This feature can be used to watermark your documents with predefined text or bitmap image or with your own user-defined message / image.
<b>Others</b>	Booklet Printing Quick Print Setup Secure Printing	This feature can be used to create a layout suitable for booklet printing This feature allows users to quickly select print options in the driver. This feature enables you to send documents directly to the printer, those documents will only be printed as and when you enter your personal PIN number into the printer.
SUPPLIES		
	Toner Black Drum Lower Tray Network Card PS3 font upgrade	TN-7600: 6,500 A4 or letter pages @ 5% coverage DR-7000: 20,000 continuous A4 or letter pages LT-500: Up to 250 sheets* NC-4100: 10/100Base TX Network interface card for HL-1850 BS-3000: 135 Agfa PS3 fonts. Total number of PS3 is 165 (136 Agfa fonts+29 Brother original fonts)
DIMENSIONS/WEIGHTS		
<b>Dimensions</b>		(425mm width) x (424mm depth) x (275mm high)
<b>Weight</b>		14.5Kg (including the drum unit and toner cartridge) HL-1850 14.7Kg (including the drum unit and toner cartridge) HL-1870N
OTHERS		
<b>Power Consumption</b>	Printing Standby	Less than 410WH Less than 70WH
<b>Noise Level</b>	Sleep Printing Standby	Less than 10WH Less than 50 dB Less than 30 dB
<b>Ecology</b>	Power Saving Toner Saving	This enables the printer to consume less energy when not in use. This reduces the toner usage and helps to reduce the total cost of printer ownership.

† 16MB on board with an additional 16MB via the DIMM slot  
\* Calculated with 80gsm paper  
\*\* Only A4, letter and legal paper (60-150gsm) with paper output delivery face down  
# Up to ten transparency sheets

Contact:



**Brother International (Aust) Pty Ltd**

Corporate Web-site: [www.brother.com.au](http://www.brother.com.au) Solutions Web site: <http://solutions.brother.com>  
**NSW/ACT:** 7 Khartoum Rd. North Ryde NSW 2113 Phone: (02) 9887 4344 Fax: (02) 9870 7234  
**VIC:** 43 Carrington Rd. Box Hill VIC 3128 Phone: (03) 9899 4844 Fax: (03) 9899 4833  
**QLD/NT:** Unit 4, 57 Miller St. Murrarie QLD 4172 Phone: (07) 3348 9266 Fax: (07) 3348 9366  
**SA/TAS:** Unit 4, 13 King William Rd. Unley SA 5061 Phone: (08) 8272 1300 Fax: (08) 8272 1199  
**WA:** 117 Great Eastern Highway. Belmont WA 6104 Phone: (08) 9478 1955 Fax: (08) 9277 2177  
 All specifications subject to change without notice