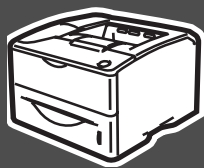


Read this Quick Setup Guide before using the printer.
Before you can use the printer, you must set up the hardware and install the driver.

Step 1



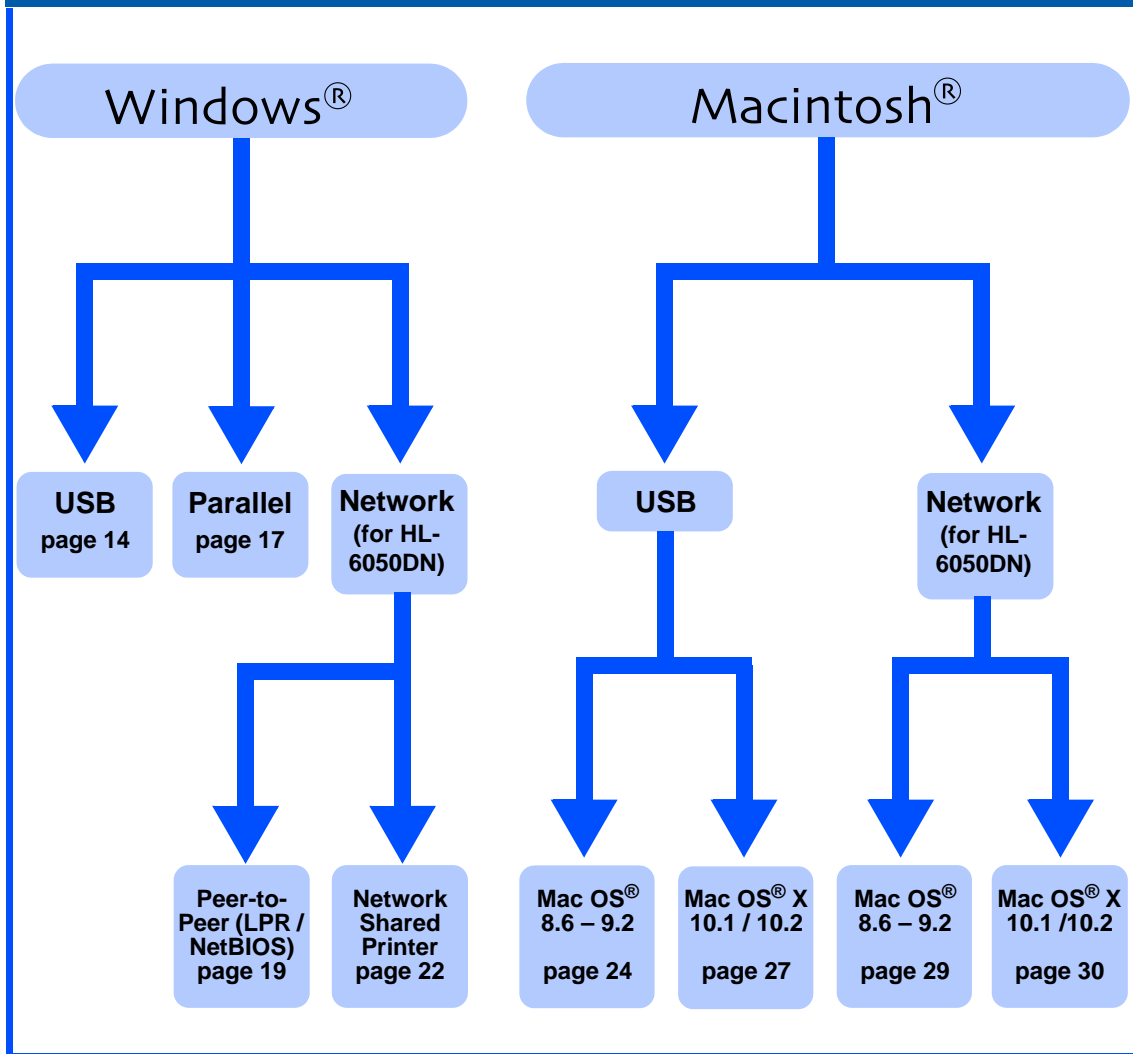
Setting Up Your Printer

Setting Up
Your Printer

Step 2



Installing the Driver



Installing the Driver

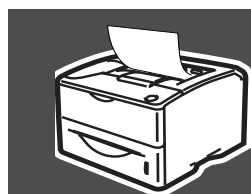
Windows®
USB

Windows®
Parallel

Windows®
Network

Macintosh®
USB

Macintosh®
Network



Setup is Complete!

For
Administrators

For the latest driver and to find the best solution for your problem or question, access the Brother Solutions Center directly from the CD-ROM/Driver or go to <http://solutions.brother.com>. Keep this Quick Setup Guide and supplied CD-ROM in a convenient place for quick and easy reference at all times.

Table of Contents

To Use the Printer Safely	2
Regulations	3

■ Getting Started

Carton Components	5
Control Panel	6
Supplied CD-ROM	7

Step 1 Setting Up Your Printer

Insert the CD-ROM into the CD-ROM Drive	8
Install the Drum Unit Assembly	9
Load Paper in the Paper Tray	10
Print a Test Page	11
Setting Your Language on the Control Panel	12

Step 2 Installing the Driver

Windows®	For USB Interface Cable Users	14
	For Parallel Interface Cable Users	17
	For Network Interface Cable Users (For HL-6050DN)	19
	For Brother Peer-to-Peer Network Printer Users (LPR / NetBIOS)	19
For Network Shared Printer Users	22	
Macintosh®	For USB Interface Cable Users	24
	For Mac OS® 8.6 to 9.2 Users	24
	For Mac OS® X 10.1 / 10.2 Users	27
	For Network Interface Cable Users (For HL-6050DN)	29
	For Mac OS® 8.6 to 9.2 Users	29
For Mac OS® X 10.1 / 10.2 Users	30	

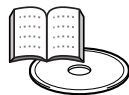
■ For Administrators (HL-6050DN)

Installing the BRAdmin Professional utility (Windows® Users Only)	32
Web BRAdmin (Windows® Users Only)	32
Setting your IP Address, Subnet Mask and Gateway using BRAdmin Professional utility (Windows® Users Only)	33
Print Printer Settings Page	33
Factory Default Setting	33

■ Other Information

Shipment of the Printer	34
Options	35





■ Troubleshooting




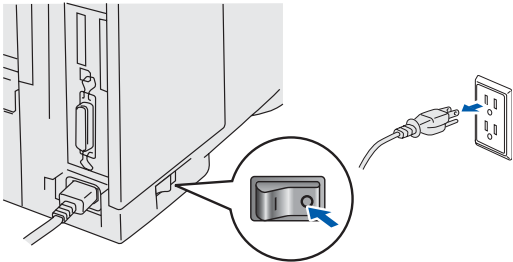

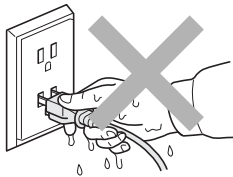

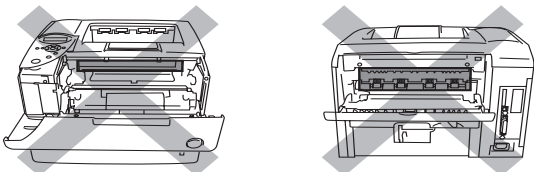

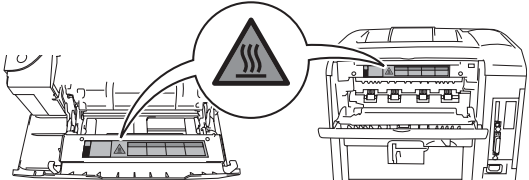
User's Guide Chapter 6

Safety Precautions

To Use the Printer Safely

 <p>Warning</p>	 <p>Note</p>	 <p>Hint</p>	 <p>User's Guide Network User's Guide</p>
<p>Indicates warnings that must be observed to prevent possible personal injury.</p>	<p>Indicates cautions that must be observed to use the printer properly or prevent damage to the printer.</p>	<p>Indicates notes and useful tips to remember when using the printer.</p>	<p>Indicates reference to the User's Guide or Network User's Guide which is on the CD-ROM we have supplied.</p>

Warning

 <p>There are high voltage electrodes inside the printer. Before replacing internal parts, cleaning the printer or clearing a paper jam, make sure you have turned OFF the power switch and unplugged the AC power cord from the AC power outlet/socket.</p>	
 <p>Do not handle the plug or AC power cord with wet hands. This constitutes an electric shock hazard.</p>	
 <p>After you have just used the printer, some internal parts of the printer are extremely hot. When you open the front cover or back cover of the printer, never touch the shaded parts shown in the illustration.</p>	 <p>Inside the printer (Front View) Open the Back Output Tray (Back View)</p>
 <p>The fuser unit is marked with a caution label. Please do Not remove or damage the label.</p>	

Regulations

Federal Communications Commission (FCC) Declaration of Conformity (For USA)

Responsible Party: Brother International Corporation
100 Somerset Corporate Boulevard
P.O. Box 6911
Bridgewater, NJ 08807-0911
USA
Telephone: (908) 704-1700

declares, that the products

Product name: Laser Printer HL-6050, 6050D and 6050DN
Model number: HL-60
Product options: Lower Tray Unit LT-6000, Network Board NC-6100h

complies with Part 15 of the FCC Rules. Operation is subject to the following two conditions: (1) This device may not cause harmful interference, and (2) this device must accept any interference received, including interference that may cause undesired operation.

This equipment has been tested and found to comply with the limits for a Class B digital device, pursuant to Part 15 of the FCC Rules. These limits are designed to provide reasonable protection against harmful interference in a residential installation. This equipment generates, uses, and can radiate radio frequency energy and, if not installed and used in accordance with the instructions, may cause harmful interference to radio communications. However, there is no guarantee that interference will not occur in a particular installation. If this equipment does cause harmful interference to radio or television reception, which can be determined by turning the equipment off and on, the user is encouraged to try to correct the interference by one or more of the following measures:

- Reorient or relocate the receiving antenna.
- Increase the separation between the equipment and receiver.
- Connect the equipment into an outlet on a circuit different from that to which the receiver is connected.
- Call the dealer, Brother Customer Service, or an experienced radio/TV technician for help.

Important

A shielded interface cable should be used to ensure compliance with the limits for a Class B digital device. Changes or modifications not expressly approved by Brother Industries, Ltd. could void the user's authority to operate the equipment.

Industry Canada Compliance Statement (For Canada)

This Class B digital apparatus complies with Canadian ICES-003.

Cet appareil numérique de la classe B est conforme à la norme NMB-003 du Canada.

Radio interference (220-240 volt model only)

This printer follows EN55022 (CISPR Publication 22)/Class B.

Before you use this product, make sure that you use a following interface cables.

1. A shielded parallel interface cable with twisted-pair conductors and that it is marked "IEEE 1284 compliant".
2. A USB cable.

The cable must not be more than 2.0 metres long.

brother

"EC" Declaration of Conformity

Manufacture

Brother Industries Ltd.,
15-1, Naeshiro-cho, Mizuho-ku,
Nagoya 467-8561, Japan

Plant

Brother Technology (Shenzhen) Ltd.
NO6 Gold Garden Ind. Nanling Buji, Longgang,
Shenzhen, China

Herewith declare that:

Products description: Laser Printer
Product Name: HL-6050, HL-6050D, HL-6050DN
Model Number: HL-60

are in conformity with provisions of the Directives applied: Low Voltage Directive 73/23/EEC (as amended by 93/68/EEC) and the Electromagnetic Compatibility Directive 89/336/EEC (as amended by 91/263/EEC and 92/31/EEC and 93/68/EEC).

Standards applied:

Harmonized:
Safety: EN60950: 2000

EMC: EN55022: 1998 Class B
EN55024: 1998
EN61000-3-2: 1995 + A14:2000
EN61000-3-3: 1995

Year in which CE marking was first affixed: 2003

Issued by: Brother Industries, Ltd.
Date: 6 August, 2003
Place: Nagoya, Japan
Signature:



Takashi Maeda
Manager
Quality Management Group
Quality Management Dept.
Information & Document Company

Laser Safety (100 to 120 volt Model Only)

This printer is certified as a Class I laser product under the U.S. Department of Health and Human Services (DHHS) Radiation Performance Standard according to the Radiation Control for Health and Safety Act of 1968. This means that the printer does not produce hazardous laser radiation.

Since radiation emitted inside the printer is completely confined within protective housings and external covers, the laser beam cannot escape from the machine during any phase of user operation.

FDA Regulations (100 to 120 volt Model Only)

U.S. Food and Drug Administration (FDA) has implemented regulations for laser products manufactured on and after August 2, 1976. Compliance is mandatory for products marketed in the United States. One of the following labels on the back of the printer indicates compliance with the FDA regulations and must be attached to laser products marketed in the United States.

MANUFACTURED:
Brother Industries, Ltd.,
15-1 Naeshiro-cho Mizuho-ku Nagoya, 467-8561 Japan
This product complies with FDA radiation performance standards, 21 CFR subchapter J.

MANUFACTURED:
Brother Technology (Shenzhen) Ltd.
NO6 Gold Garden Ind. Nanling Buij, Longgang, Shenzhen, CHINA
This product complies with FDA radiation performance standards, 21 CFR Subchapter J

- **Caution:** Use of controls, adjustments or performance of procedures other than those specified in this manual may result in hazardous radiation exposure.

IEC 60825 specification (220 to 240 volt model only)

This printer is a Class 1 laser product as defined in IEC 60825 specifications. The label shown below is attached in countries where it is needed.



This printer has a Class 3B laser diode which produces invisible laser radiation in the scanner unit. You should not open the scanner unit under any circumstances.

- **Caution:** Use of controls or adjustments or performance of procedures other than those specified herein may result in hazardous radiation exposure.

For Finland and Sweden LUOKAN 1 LASERLAITE KLASS 1 LASER APPARAT

- **Varoitus!** Laitteen käyttäminen muulla kuin tässä käyttöohjeessa mainitulla tavalla saattaa altistaa käyttäjän turvallisuusluokan 1 ylittävälle näkymättömälle lasersäteilylle.
- **Varning** Om apparaten används på annat sätt än i denna Bruksanvisning specificerats, kan användaren utsättas för osynlig laserstrålning, som överskrider gränsen för laserklass 1.

Internal laser radiation

Maximum radiation power: 10 mW
Wave length: 760 - 810 nm
Laser class: Class IIIb
(Accordance with 21 CFR Part 1040.10)
Class 3B
(Accordance with IEC 60825)

IMPORTANT - For Your Safety

To ensure safe operation the supplied three-pin plug must be inserted only into a standard three-pin power outlet that is properly grounded through the standard electrical wiring.

Extension cords used with this printer must be three-pin plug type and correctly wired to provide proper grounding. Incorrectly wired extension cords may cause personal injury and equipment damage.

The fact that the equipment operates satisfactorily does not imply that the power is grounded and that the installation is completely safe. For your safety, if in any doubt about the effective grounding of the power, call a qualified electrician.

Disconnect device

You must install this printer near a power outlet that is easily accessible. In case of an emergency, you must disconnect the power cord from the power outlet to shut off the power completely.

Caution for LAN connection (For model HL-6050DN only)

Connect this product to a LAN connection that is not subjected to over voltages.

IT power system (For Norway only)

This product is also designed for an IT power system with phase-to-phase voltage 230V.

Geräuschmission / Acoustic noise emission (for Germany only)

Lpa < 70 dB (A) DIN 45635-19-01-KL2

Wiring information (for UK)

Important

If you need to replace the plug fuse, fit a fuse that is approved by ASTA to BS1362 with the same rating as the original fuse.

Always replace the fuse cover. Never use a plug that does not have a cover.

Warning - This printer must be earthed.

The wires in the mains lead are coloured in line with the following code :

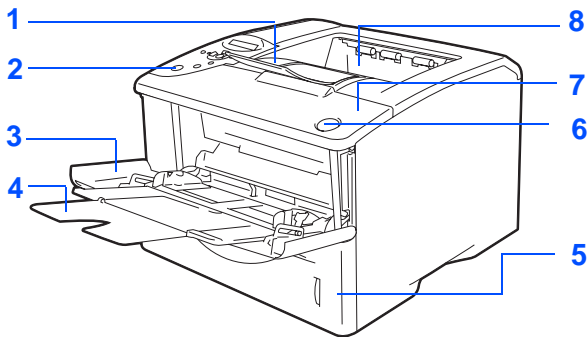
Green and Yellow: Earth
Blue: Neutral
Brown: Live

If in any doubt, call a qualified electrician.

Getting Started

Carton Components

Printer

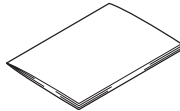


- 1 Face-down Output Tray Support Flap (Support Flap)
- 2 Control Panel
- 3 Multi-purpose Tray (MP Tray)
- 4 MP Tray Support Flap
- 5 Paper Tray
- 6 Front Cover Release Button
- 7 Front Cover
- 8 Face-down Output Tray (Top Output Tray)

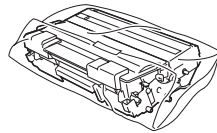


CD-ROM

(including User's Guide)

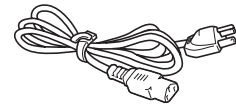


Quick Setup Guide



Drum Unit Assembly

(including Toner Cartridge)



AC Power Cord

Carton components may differ from one country to another.

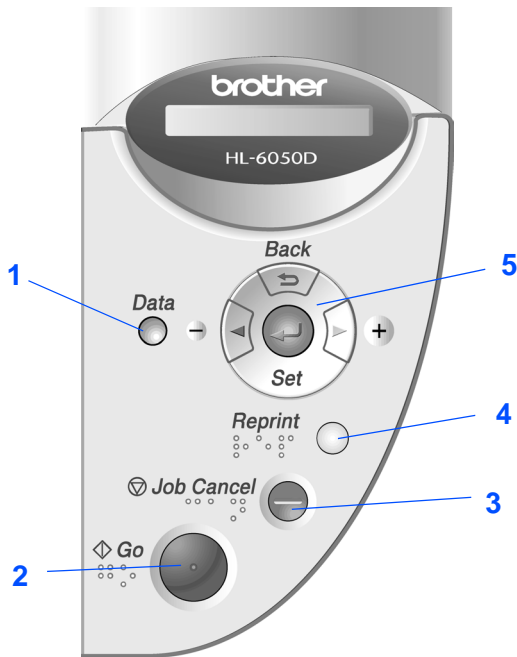
The power cord may be slightly different to the one in the diagram above, depending upon which country you bought the printer in.

Save all packing materials and the printer carton.



- *The interface cable is not a standard accessory. Buy the appropriate interface cable for the interface you intend to use (Parallel, USB or Network).*
- *It is recommended to use a Parallel or USB interface cable that is not longer than 6 feet (2.0 meters).*
- *For Parallel interface cable users, use a shielded interface cable that is IEEE 1284-compliant.*
- *Use a Hi-Speed USB 2.0 certified cable if your computer uses a Hi-Speed USB 2.0 interface.*

Control Panel



The control panel has a buzzer function for visually-impaired users. See Chapter 3 in the User's Guide for more information.



User's Guide Chapter 3.



The control panel with Braille symbols is optionally available for some countries. If you want to buy an optional control panel with Braille symbols, call the dealer you bought the printer from.

1 Data LED : Orange

On	Data remains in the printer buffer.
Blinking	Receiving or processing data.
Off	No remaining data.

2 Go Button

Exit from the control panel menu and reprint setting.
Clear error messages.
Pause / Continue printing.

3 Job Cancel Button

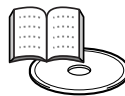
Stop and cancel the printer operation in progress.

4 Reprint Button

Select the Reprint menu.



Please enhance the RAMDISK size when you want to use the Reprint functions without the CompactFlash.



User's Guide Chapter 4.

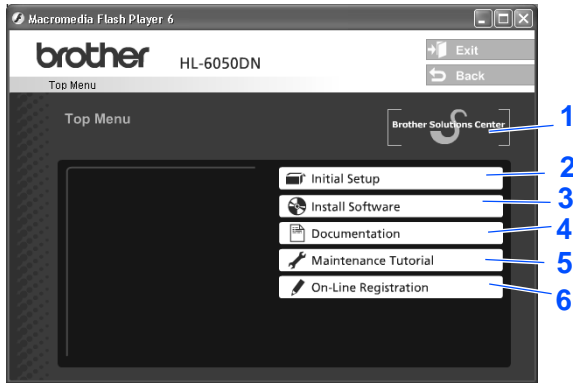
5 Menu Buttons

+	Move forward through menus.
-	Move backward through menus.
Set	Select the Control Panel. Set the selected menus and settings.
Back	Go back one level in the menu structure.

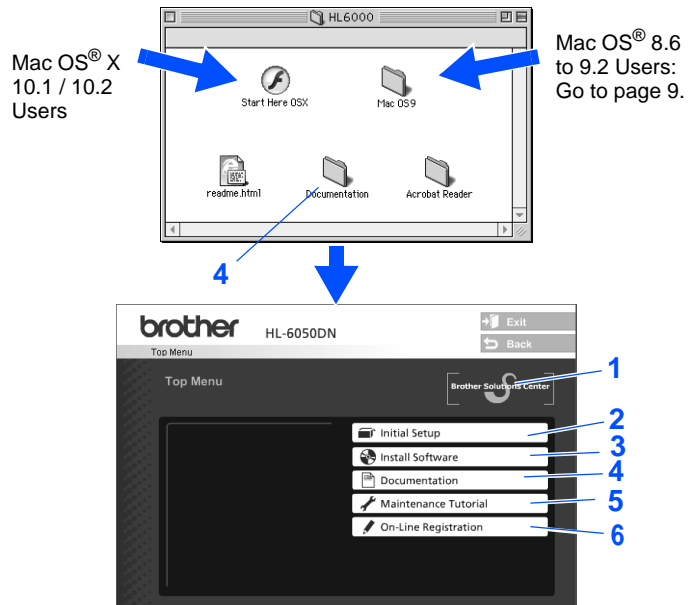
Supplied CD-ROM

You can find a variety of information on the CD-ROM.

Windows®



Macintosh®



1 Brother Solutions Center

The Brother Solutions Center (<http://solutions.brother.com>) is a one-stop resource for all your printer needs. Download the latest drivers and utilities for your printers, read the FAQs and troubleshooting tips, or learn about printer solutions.

2 Initial Setup

Instructional movie for printer setup and driver installation.

3 Install Software

Installs the printer driver and utilities.

4 Documentation

View the Printer User's Guide and Network User's Guide in PDF format. (Viewer included) User's Guide will be installed automatically when you install the driver. From the Start button, select Programs, your printer (e.g. Brother HL-6050), and User's Guide. If you do not want to install User's Guide, select Custom Installation when you install the driver.

5 Maintenance Tutorial

Instructional movie for printer maintenance.

6 On-Line Registration

Register your product on-line.



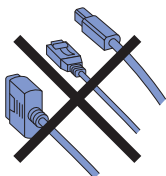
*For visually impaired users:
Please see a HTML file, `readme.html`, on the supplied CD-ROM. You can read it with Screen Reader 'text-to-speech' software.*

1 Insert the CD-ROM into the CD-ROM Drive

For Windows® Users



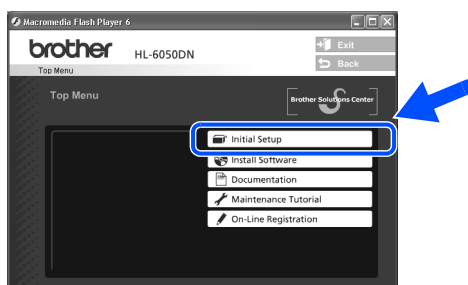
Do NOT connect the interface cable. Connecting the interface cable is done when installing the driver.



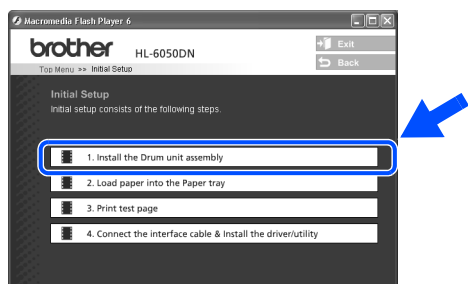
- 1 Insert the CD-ROM into your CD-ROM drive. The opening screen will appear automatically. Follow the on-screen instructions.



- 2 Click **Initial Setup** on the menu screen.



- 3 You can view the Initial Setup instructions and follow the steps on pages 9 to 12.



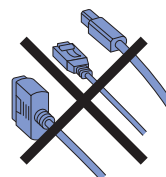
For Macintosh® Users



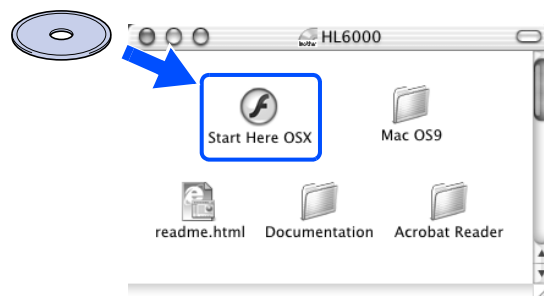
This is for Mac OS® X 10.1 / 10.2 Users. If you are Mac OS® 8.6 to 9.2 Users, go to next page.



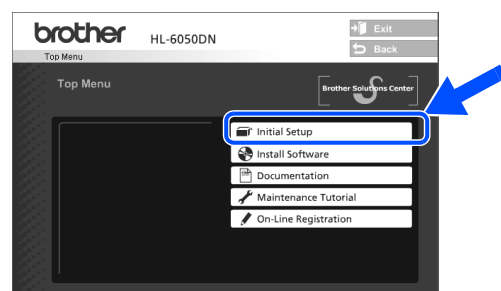
Do NOT connect the interface cable. Connecting the interface cable is done when installing the driver.



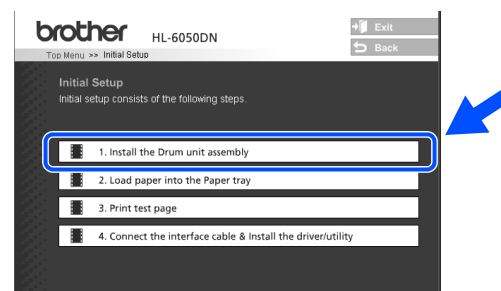
- 1 Insert the CD-ROM into your CD-ROM drive. Double-click the **Start Here OS X** icon. Follow the on-screen instructions.



- 2 Click **Initial Setup** on the menu screen.



- 3 You can view the Initial Setup instructions and follow the steps on pages 9 to 12.

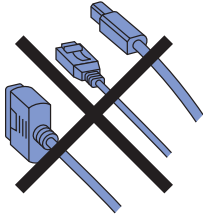




2 Install the Drum Unit Assembly

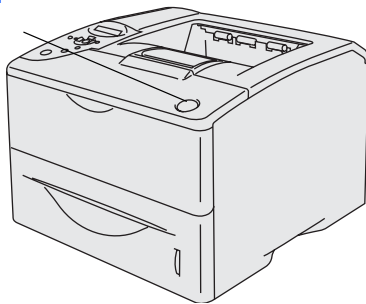


Do NOT connect the interface cable. You will be prompted to connect the interface cable during the driver installation.

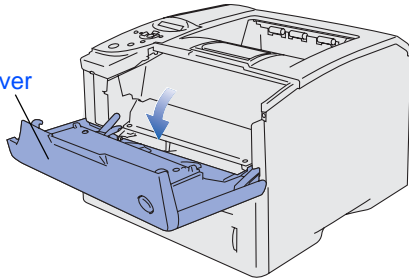


- 1 Open the front cover by pressing the front cover release button.

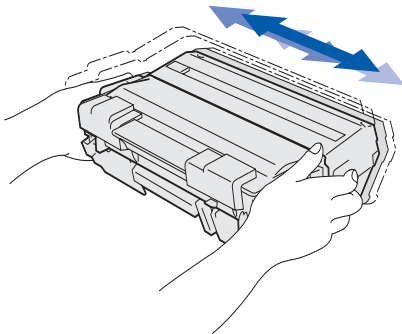
Front cover
release
button



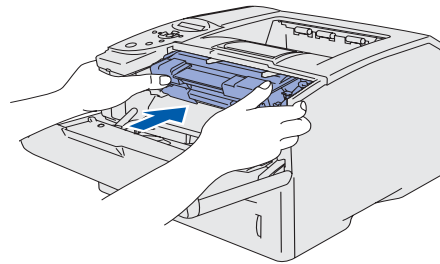
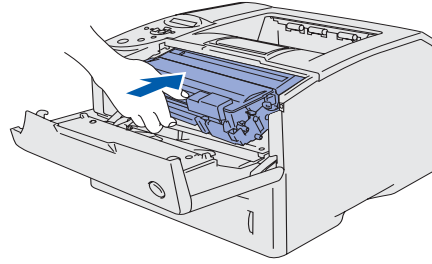
Front cover



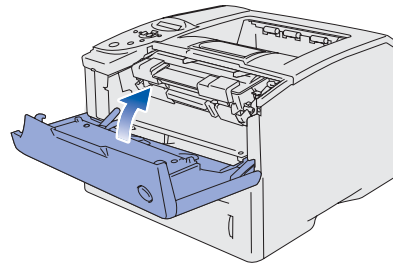
- 2 Unpack the drum unit assembly. Rock it from side to side several times to distribute the toner evenly inside the assembly.



- 3 Put the drum unit assembly into the printer.



- 4 Close the front cover of the printer.



Go to the next page

Setting Up
Your Printer

Windows®
USB

Windows®
Parallel

Windows®
Network

Macintosh®
USB

Macintosh®
Network

For
Administrators

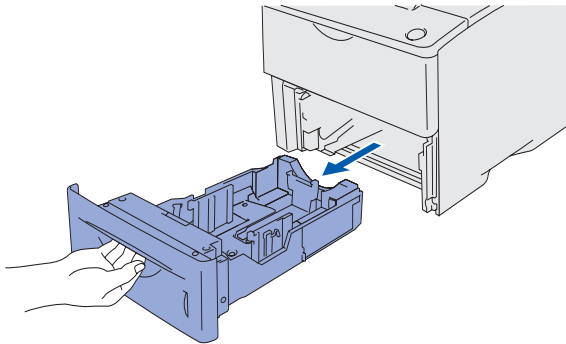
Installing the Driver

Step 1

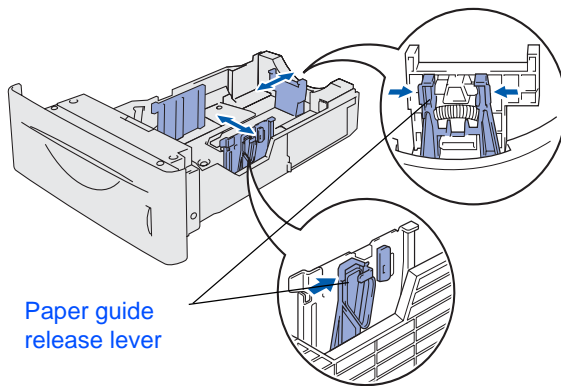
Setting Up Your Printer


3 Load Paper in the Paper Tray

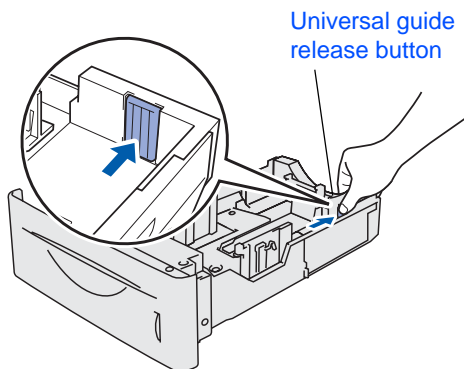
- 1 Pull the paper tray completely out of the printer.



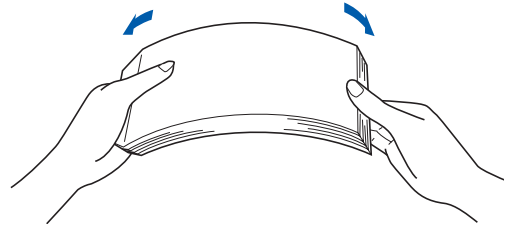
- 2 While pressing the paper guide release lever, slide the adjusters to fit the paper size. Check that the guides are firmly in the slots.



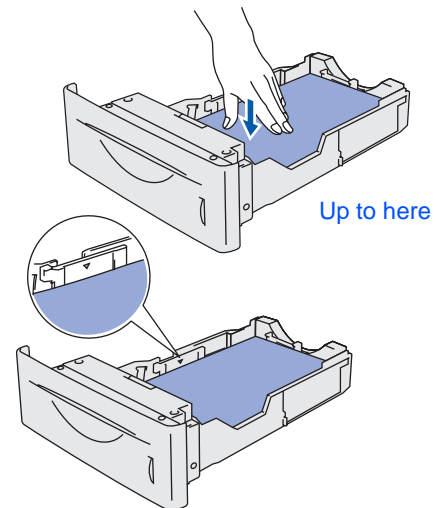
-  For Legal size paper, press the universal guide release button and pull out the back of the paper tray.



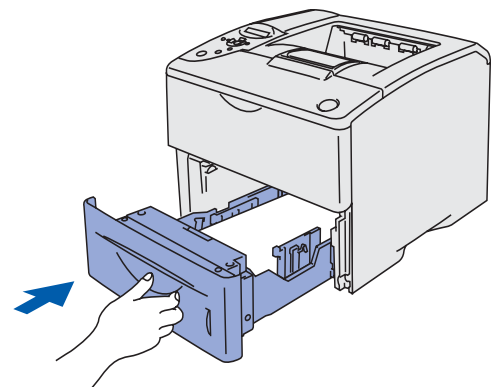
- 3 To avoid paper jams and misfeeds, fill the paper tray with small stacks of paper that you have fanned well.



- 4 Put paper in the paper tray. Check that the paper is flat in the tray and below the maximum paper mark.



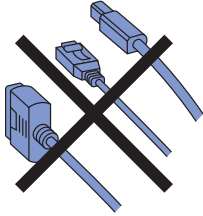
- 5 Put the paper tray firmly back in the printer.



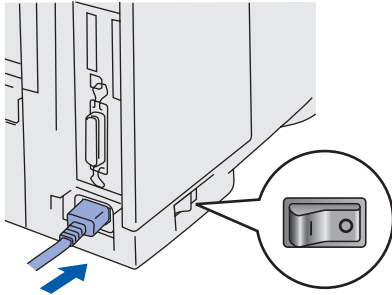


4 Print a Test Page

 Do NOT connect the interface cable. Connecting the interface cable is done when installing the driver.



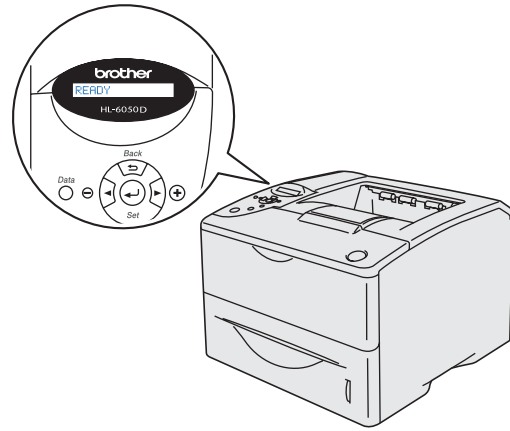
- 1 Make sure that the printer's power switch is off. Connect the AC power cord to the printer.



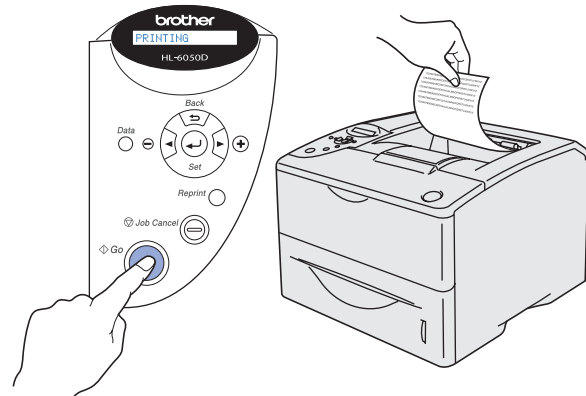
- 2 Plug the AC power cord into an AC power outlet/socket. Turn the printer's power switch on.

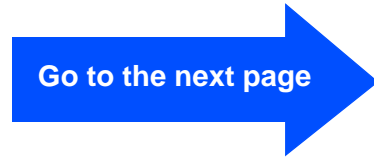


- 3 After the printer has finished warming up, the READY message appears.



- 4 Press the **Go** button. The printer prints a test page. Check that the test page has printed correctly.



 Go to the next page

Setting Up
Your Printer

Windows®
USB

Windows®
Parallel

Windows®
Network

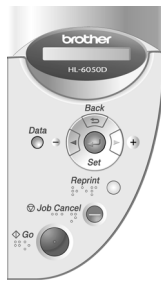
Macintosh®
USB

Macintosh®
Network

For
Administrators

Installing the Driver

6 Setting Your Language on the Control Panel



- 1 Press the **+** button until **SETUP** is displayed. Press the **Set** button.

SETUP

- 2 Press the **Set** button again.

LANGUAGE

- 3 Press the **+** or **-** button to select your language. Press the **Set** button to accept.

=ENGLISH *

Go to the next page
to install the driver.



Follow the instructions on this page for your operating system and interface cable.
The screens for Windows® in this Quick Setup Guide are based on Windows® XP and HL-6050DN.
The screens for Mac OS® X in this Quick Setup Guide are based on Mac OS® X 10.1 and HL-6050DN.

Windows®



For USB Interface Cable Users Go to page 14



For Parallel Interface Cable Users..... Go to page 17



For Network Interface Cable Users (For HL-6050DN)

- **Brother Peer-to-Peer Network Printer Users (LPR / NetBIOS)** Go to page 19
- **Network Shared Printer Users**..... Go to page 22

Macintosh®



For USB Interface Cable Users

- **Mac OS® 8.6 to 9.2 Users** Go to page 24
- **Mac OS® X 10.1 / 10.2 Users**..... Go to page 27



For Network Interface Users (For HL-6050DN)

- **Mac OS® 8.6 to 9.2 Users** Go to page 29
- **Mac OS® X 10.1 / 10.2 Users**..... Go to page 30

For Administrators Go to page 32

Windows®
USB

Windows®
Parallel

Windows®
Network

Macintosh®
USB

Macintosh®
Network

For
Administrators



For USB Interface Cable Users

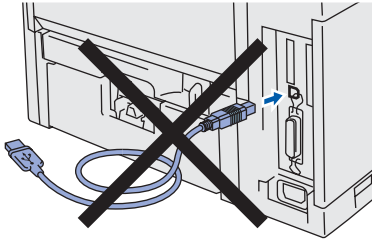
1. Installing the Driver and Connecting the Printer to Your PC



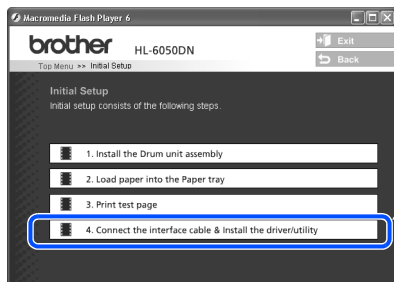
If the **Found New Hardware Wizard** appears on your PC, click the **Cancel** button.



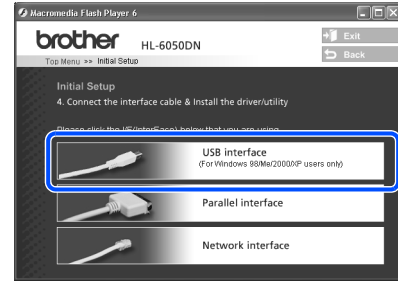
- 1 Make sure the USB interface cable is **NOT** connected to the printer, and then begin installing the driver. If you have already connected the cable, remove it.



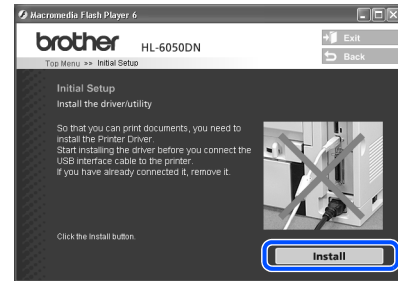
- 2 Click **Connect the interface cable & Install the driver/utility** from the **Initial Setup** menu.



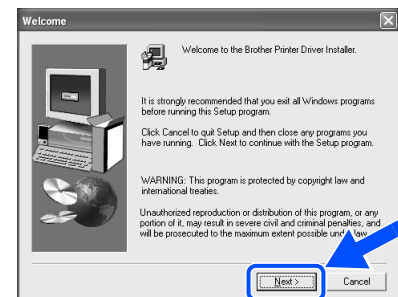
- 3 Select the **USB interface**.



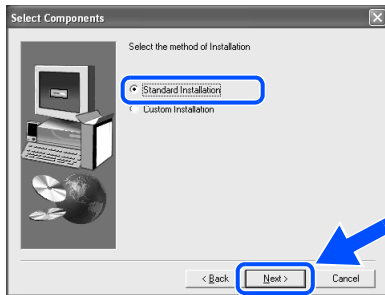
- 4 Click the **Install** button.



- 5 Click the **Next** button. Follow the on-screen instructions.

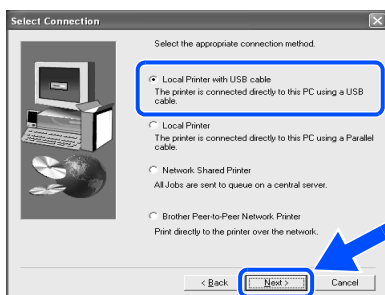


- 6 Select **Standard Installation**, and then click the **Next** button.

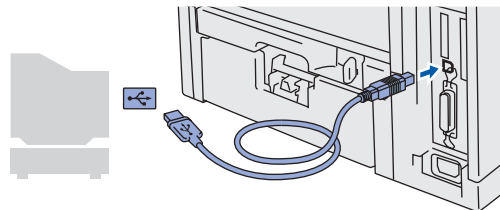
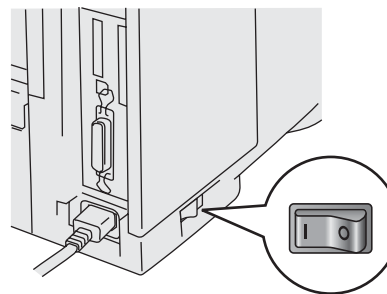
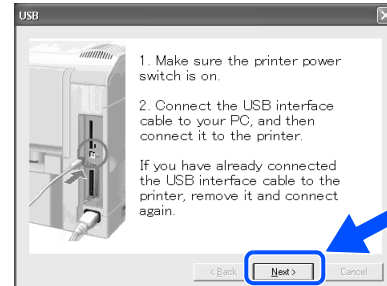


- If you want to install the PS driver, select **Custom** and then follow the on-screen instructions. When the **Select Components** screen appears, check **PS Printer Driver**, and then continue following the on-screen instructions.
- If you do not want to install the User's Guide, select **Custom** and then follow the on-screen instructions. When the **Select Components** screen appears, remove the check from the User's Guide box, and then continue following the on-screen instructions.

- 7 Select **Local Printer with USB cable**, and then click the **Next** button.



- 8 When this screen appears, make sure the printer's power switch is on. Connect the USB interface cable to your PC, and then connect it to the printer. Click the **Next** button.

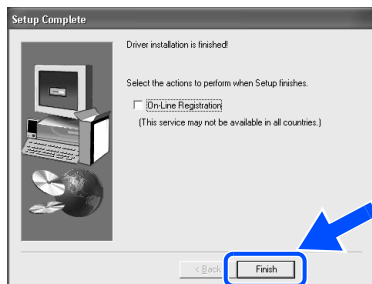


Continue to
the next page



For USB Interface Cable Users

- 10 Click the **Finish** button.



If you want to register your product on-line, check **On-Line Registration**.



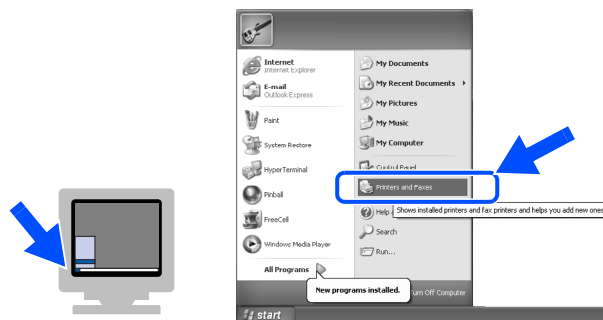
For Windows® 98 / Me users:
Setup is now complete.



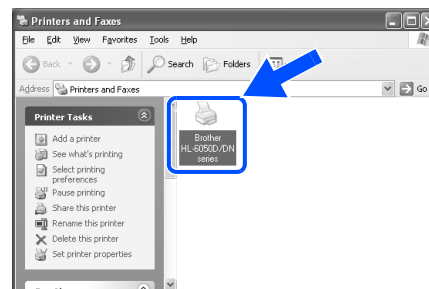
For Windows® 2000/XP users:
Go to "2. Setting Your Printer as the Default Printer".

2. Setting your Printer as the Default Printer (For Windows® 2000/XP Users Only)

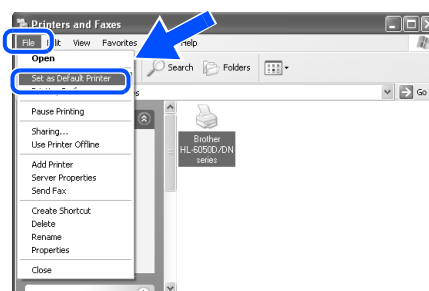
- 1 Click **Start** and then **Printers and Faxes**.



- 2 Select the **Brother HL-6050D/DN series** icon.



- 3 From the **File** menu, select **Set as Default printer**.



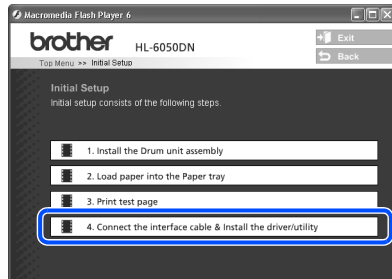
- OK! Setup is now complete.



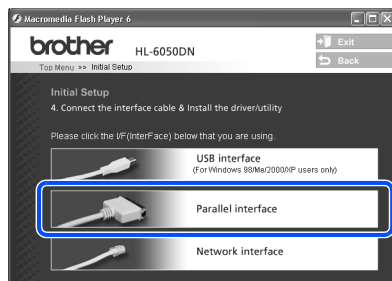
For Parallel Interface Cable Users

Connecting the Printer to Your PC and Installing the Driver

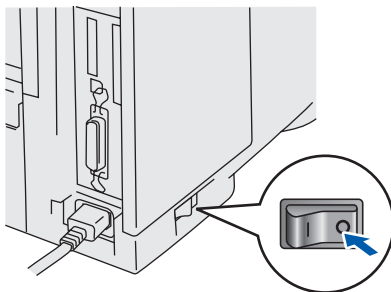
- 1 Click **Connect the interface cable & Install the driver/utility** from the **Initial Setup** menu.



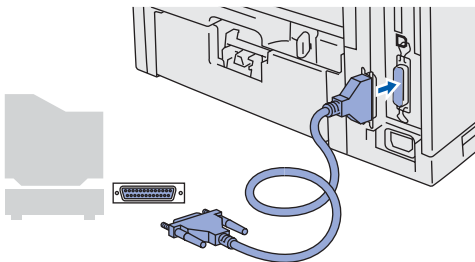
- 2 Select the **Parallel interface**.



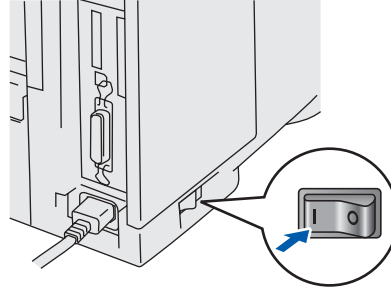
- 3 Turn off the printer's power switch.



- 4 Connect the parallel interface cable to your PC, and then connect it to your printer.



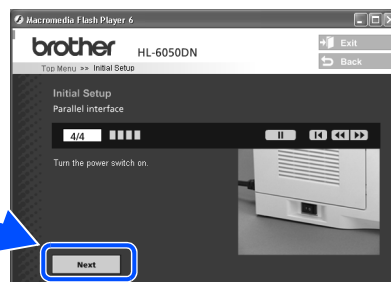
- 5 Turn on the printer's power switch.



If the **Found New Hardware Wizard** appears on your PC, click the **Cancel** button.



- 6 Click the **Next** button when the movie finishes.



Continue to
the next page

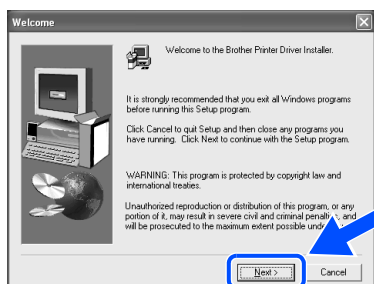


For Parallel Interface Cable Users

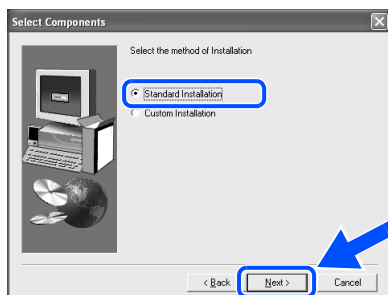
- 7 Click the **Install** button.



- 8 Click the **Next** button.
Follow the on-screen instructions.



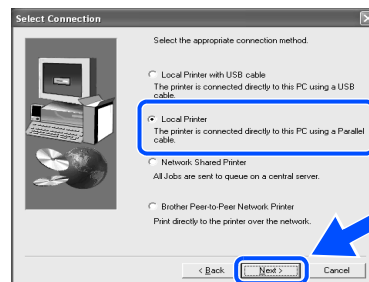
- 9 Select **Standard Installation**, and then click the **Next** button.



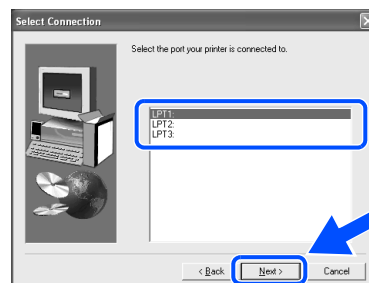
- If you want to install the PS driver, select **Custom** and then follow the on-screen instructions. When the **Select Components** screen appears, check **PS Printer Driver**, and then continue following the on-screen instructions.

- If you do not want to install the *User's Guide*, select **Custom** and then follow the on-screen instructions. When the **Select Components** screen appears, remove the check from the *User's Guide* box, and then continue following the on-screen instructions.

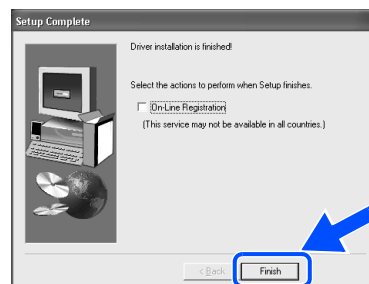
- 10 Select **Local Printer**, and then click the **Next** button.



- 11 Select the port that your printer is connected to, and then click the **Next** button.



- 12 Click the **Finish** button.



If you want to register your product on-line, check **On-Line Registration**.



Setup is now complete.

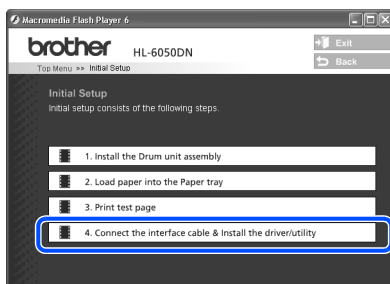
For Network Interface Cable Users (For HL-6050DN)

For Brother Peer-to-Peer Network Printer Users (LPR / NetBIOS)

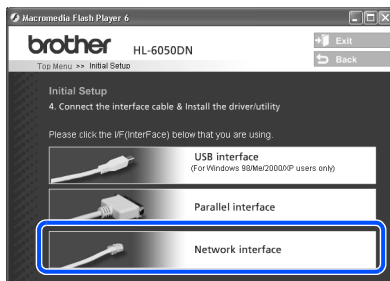
- If you are going to connect the printer to your network, we recommended that you contact your system administrator prior to installation.
- Before installation, if you are using Personal Firewall software (e.g. the Internet Connection Firewall available in Windows XP), disable it. Once you are sure that you can print, re-start your Personal Firewall software.

Connecting the Printer to Your Network and Installing the Driver

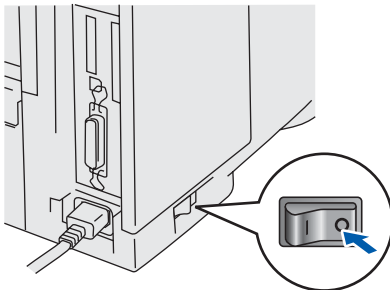
- 1 Click **Connect the interface cable & Install the driver/utility** from the **Initial Setup** menu.



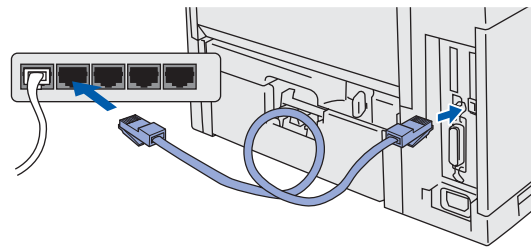
- 2 Select the **Network interface**.



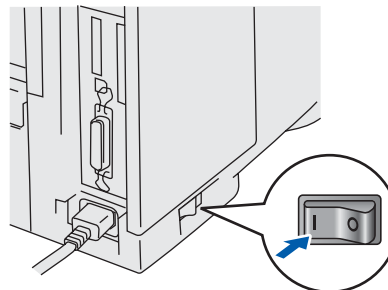
- 3 Turn off the printer's power switch.



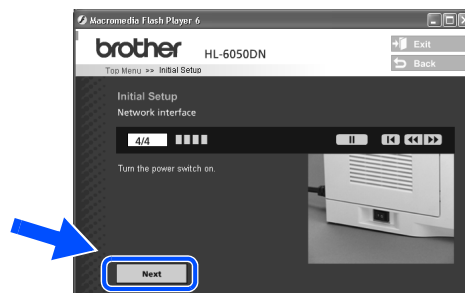
- 4 Connect the network interface cable to the printer, and then connect it to a free port on your hub.



- 5 Turn on the printer's power switch.



- 6 Click the **Next** button when the movie finishes.



Continue to
the next page

For Network Interface Cable Users (For HL-6050DN)

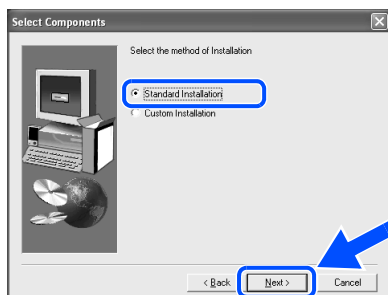
- 7 Click the **Install** button.



- 8 Click the **Next** button.
Follow the on-screen instructions.

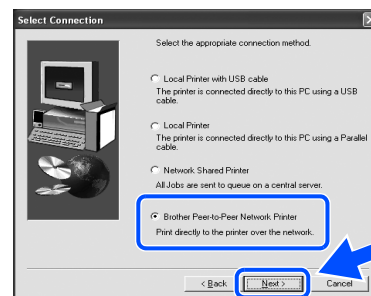


- 9 Select **Standard Installation**, and then click the **Next** button.



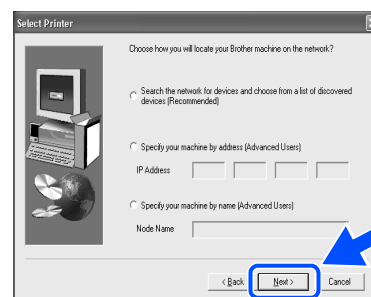
- If you want to install the PS driver, select **Custom** and then follow the on-screen instructions. When the **Select Components** screen appears, check **PS Printer Driver**, and then continue following the on-screen instructions.
- If you do not want to install the *User's Guide*, select **Custom** and then follow the on-screen instructions. When the **Select Components** screen appears, remove the check from the *User's Guide* box, and then continue following the on-screen instructions.

- 10 Select **Brother Peer-to-Peer Network Printer**, and then click the **Next** button.



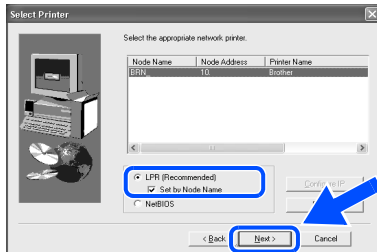
- 11 **For LPR Users:**
Select **Search the network for devices and choose from a list of discovered devices (Recommended)**. Or enter your printer's IP address or its node name. Click the **Next** button.

- For NetBIOS Users:**
Select **Search the network for devices and choose from a list of discovered devices (Recommended)**. Click the **Next** button.

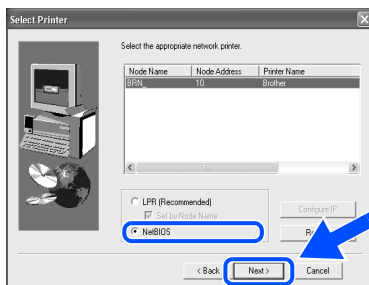


Contact your Administrator about the printer's IP Address or node name.

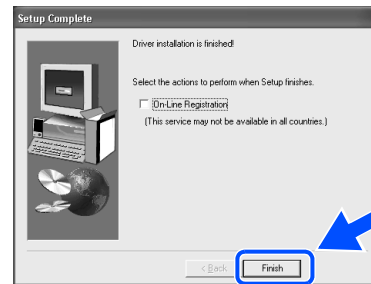
- 12 For LPR Users:**
Select your printer and **LPR (Recommended)**, and then click the **Next** button.



- For NetBIOS Users:**
Select your printer and **NetBIOS**, and then click the **Next** button.



- 13 Click the Finish button.**



*If you want to register your product on-line, check **On-Line Registration**.*

- OK!** For Windows NT® 4.0 and Windows® 2000/XP users:
Setup is now complete.
- OK!** For Windows® 95 / 98 / Me users:
After your PC has restarted, setup will be complete.

For Network Interface Cable Users (For HL-6050DN)

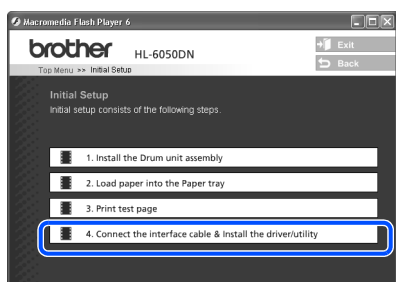
For Network Shared Printer Users



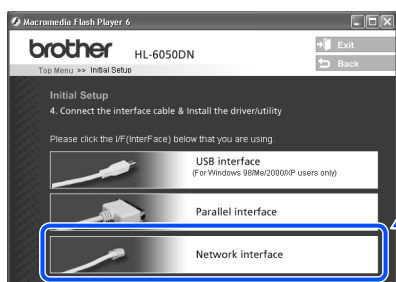
If you are going to connect the printer to your network, we recommended that you contact your system administrator prior to installation.

Installing the Driver, Connecting the Cable and Selecting the Appropriate Printer Queue or Share name

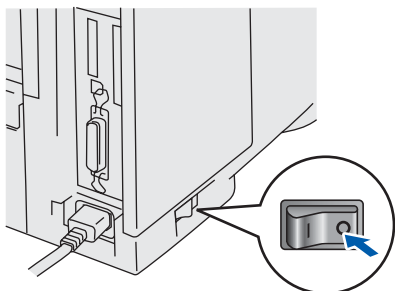
- 1 Click **Connect the interface cable & Install the driver/utility** from the **Initial Setup** menu.



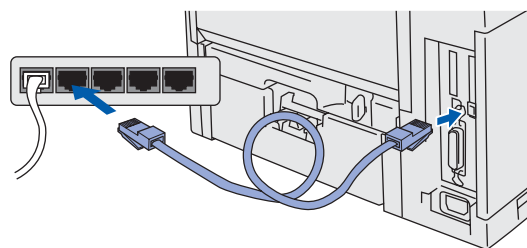
- 2 Select the **Network interface**.



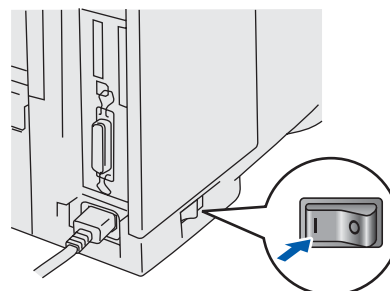
- 3 Turn off the printer's power switch.



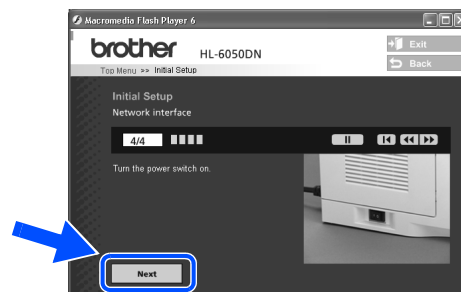
- 4 Connect the network interface cable to the printer, and then connect it to a free port on your hub.



- 5 Turn on the printer's power switch.



- 6 Click the **Next** button when the movie finishes.



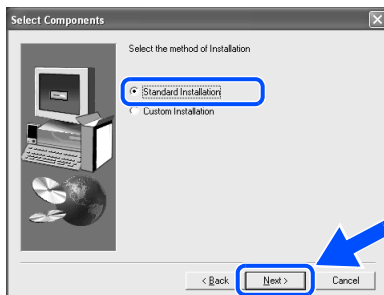
- 7 Click the **Install** button.




- 8 Click the **Next** button.
Follow the on-screen instructions.

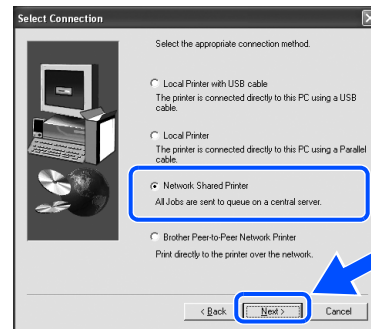


- 9 Select **Standard Installation**, and then click the **Next** button.

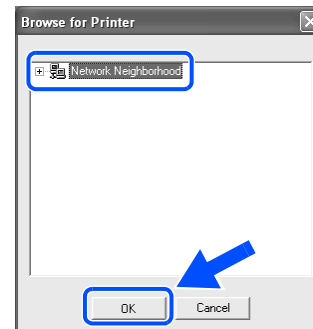



-  ■ If you want to install the PS driver, select **Custom** and then follow the on-screen instructions. When the **Select Components** screen appears, check **PS Printer Driver**, and then continue following the on-screen instructions.
- If you do not want to install the *User's Guide*, select **Custom** and then follow the on-screen instructions. When the **Select Components** screen appears, remove the check from the *User's Guide* box, and then continue following the on-screen instructions.

- 10 Select the **Network Shared Printer**, and then click the **Next** button.

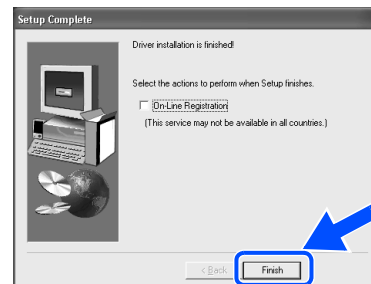


- 11 Select your printer's queue, and then click the **OK** button.



-  *Contact your Administrator about the printer's queue.*

- 12 Click the **Finish** button.



-  *If you want to register your product on-line, check **On-Line Registration**.*

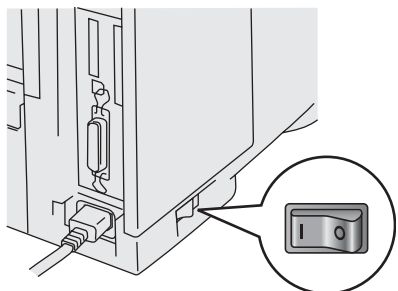
-  **Setup is now complete.**

For USB Interface Cable Users

For Mac OS[®] 8.6 to 9.2 Users

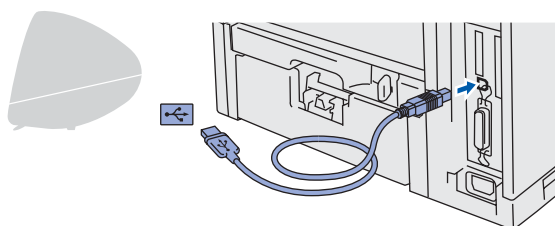
1. Connecting the Printer to your Macintosh[®] & Installing the PPD File

- 1 Make sure the printer's power switch is on.

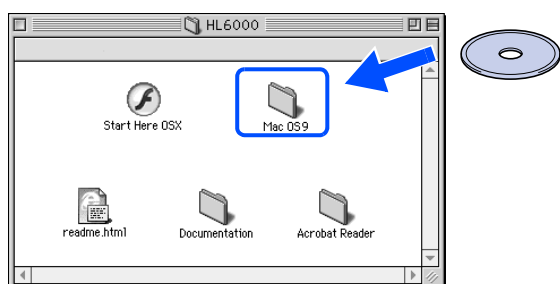


- 2 Connect the USB interface cable to your Macintosh[®], and then connect it to the printer.

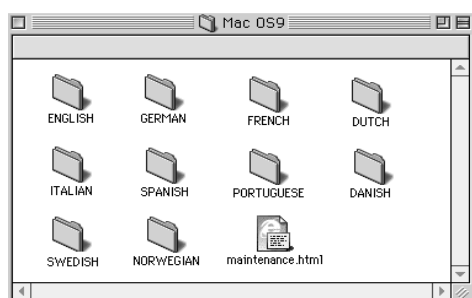
Do not connect the USB cable to the keyboard USB Port or a non-powered USB Hub.



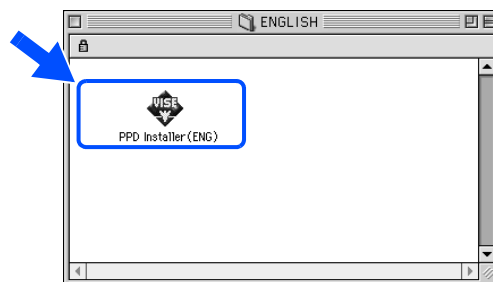
- 3 Insert the CD-ROM into your CD-ROM drive. Open the **Mac OS[®] 9** folder.



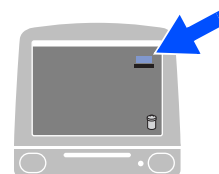
- 4 Open your language folder.



- 5 Double-click the **PPD installer** icon. Follow the on-screen instructions.

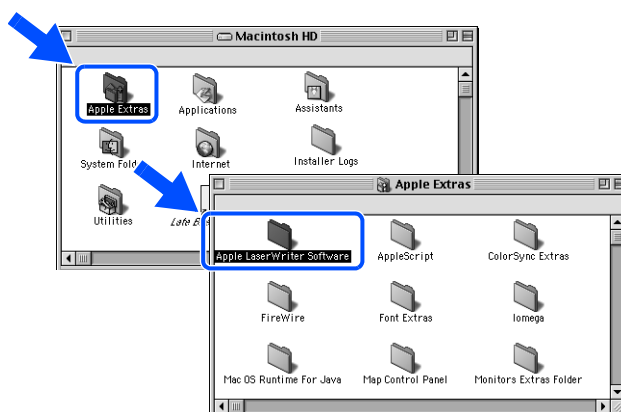


- 6 Open the **Macintosh HD** icon.



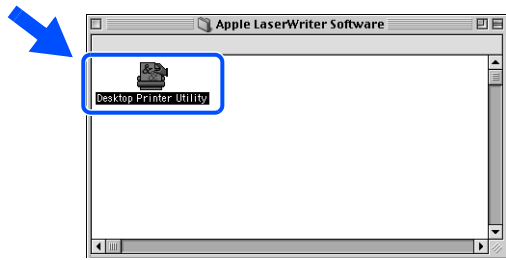
- 7 **For Mac OS[®] 8.6 to 9.04 Users:**
Open the **Apple Extras** folder.
Open the **Apple LaserWriter Software** folder.

For Mac OS[®] 9.1 to 9.2 Users:
Open the **Applications (Mac OS[®] 9)** folder.
Open the **Utilities** folder.

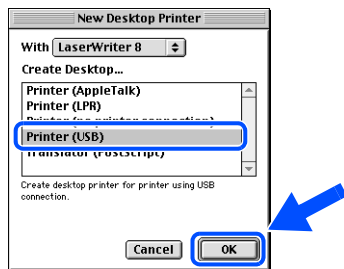


* The screens are based on Mac OS[®] 9.04.

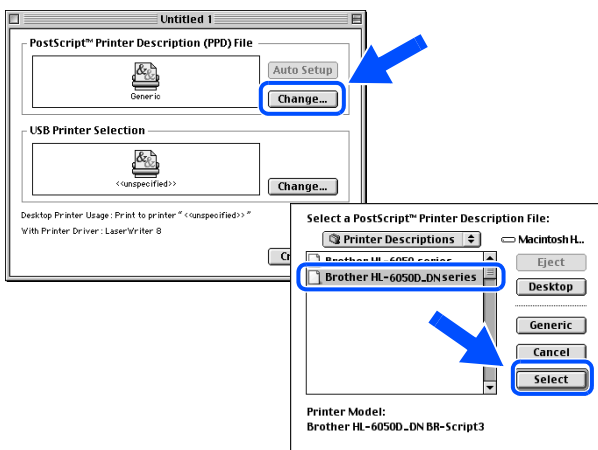
- 8 Open the **Desktop Printer Utility** icon.



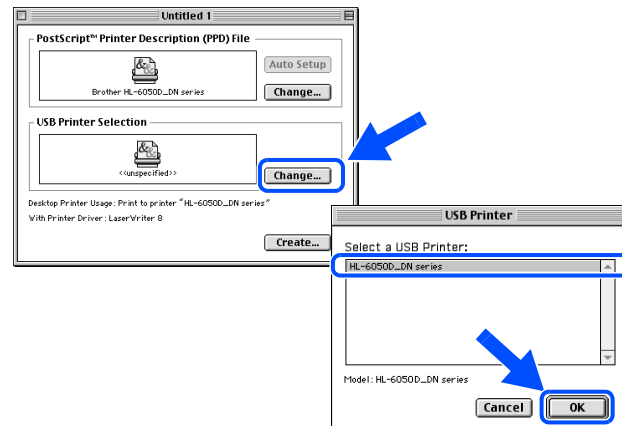
- 9 Select **Printer (USB)**, and then click the **OK** button.



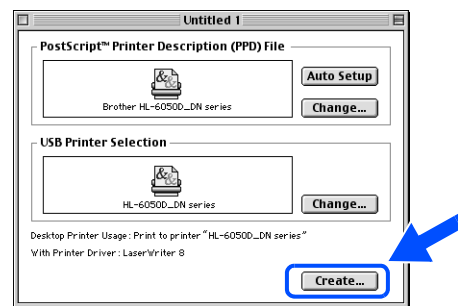
- 10 Click the **Change...** button in **PostScript™ Printer Description (PPD) file**. Select the appropriate printer, and then click the **Select** button.



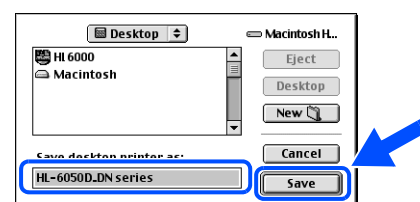
- 11 Click the **Change...** button in the **USB Printer Selection**. Select the appropriate printer, and then click the **OK** button.



- 12 Click the **Create...** button.



- 13 Enter your printer name (HL-6050D_DN series), and then click the **Save** button.

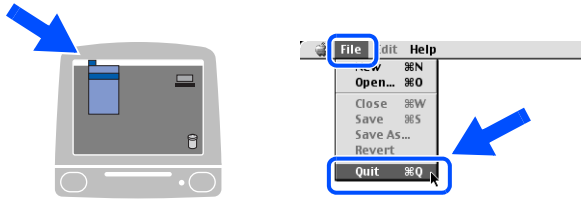


Continue to
the next page

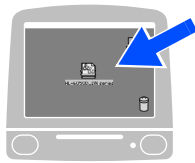


For USB Interface Cable Users

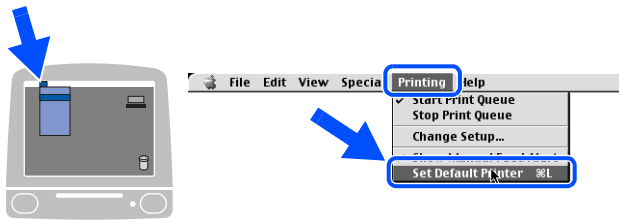
- 14 Select **Quit** from the **File** menu



- 15 Click the **HL-6050D_DN series** icon on the Desktop.



- 16 From the Printing menu, select **Set Default Printer**.



- OK!** Setup is now complete.

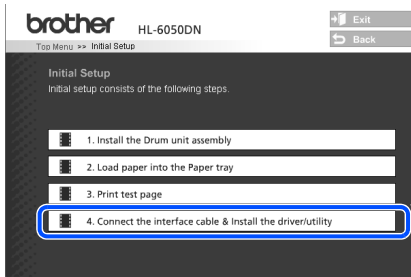



For USB Interface Cable Users

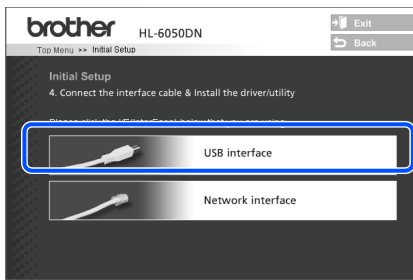
For Mac OS® X 10.1 / 10.2 Users

Connecting the Printer to your Macintosh® & Installing the PPD File

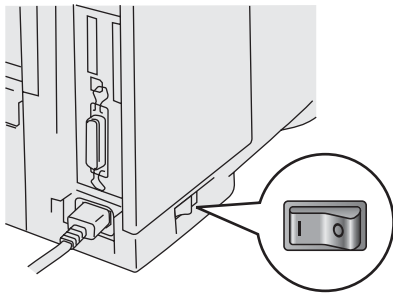
- 1 Click **Connect the interface cable & Install the driver/utility** from the **Initial Setup** menu.



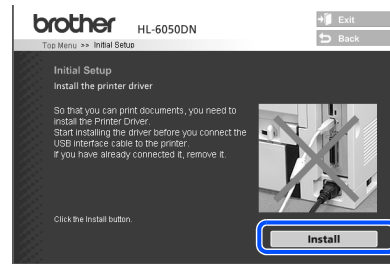
 If this screen appears, select the **USB interface**.




- 2 Make sure the printer's power switch is on.

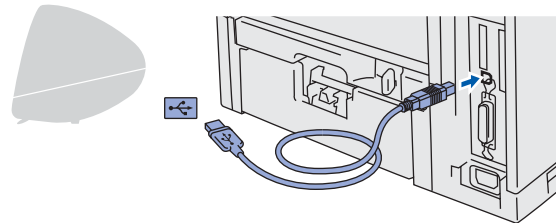


- 3 Click the **Install** button and follow the on-screen instructions.

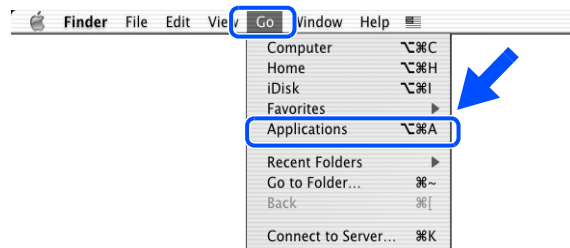


- 4 Connect the USB interface cable to your Macintosh®, and then connect it to the printer.

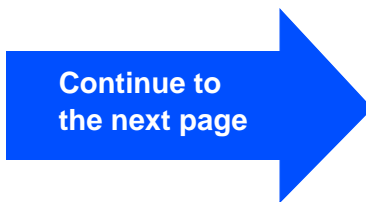
 Do not connect the USB cable to the keyboard USB Port or to a non-powered USB Hub.



- 5 From the **Go** menu, select **Applications**.



Continue to
the next page



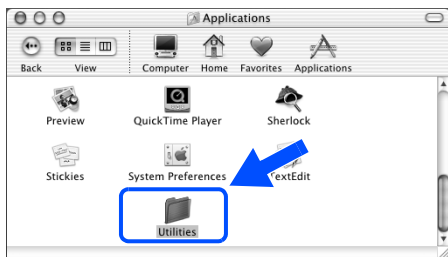
Step 2

Installing the Driver

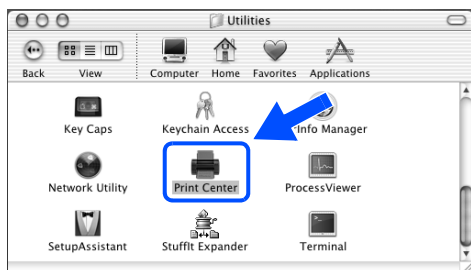


For USB Interface Cable Users

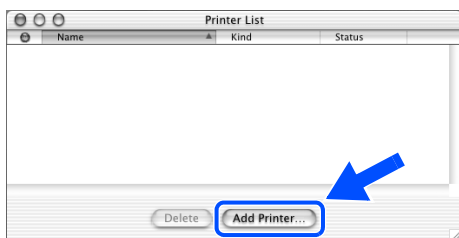
- 6 Open the **Utilities** folder.



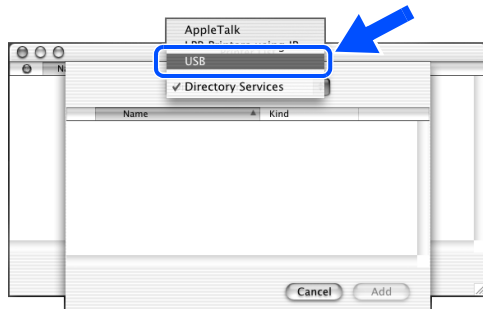
- 7 Open the **Print Center** icon.



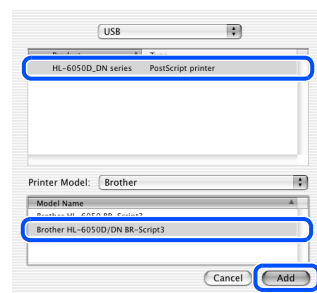
- 8 Click the **Add Printer...** button.



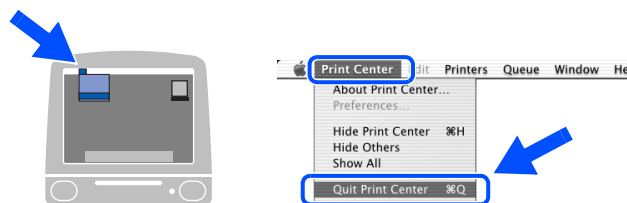
- 9 Select **USB**.



- 10 Select the appropriate printer, and then click the **Add** button.



- 11 From the **Print Center** menu, select **Quit Print Center**.



- OK!** Setup is now complete.

For Network Interface Cable Users (For HL-6050DN)

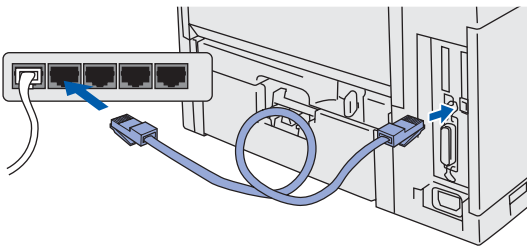
For Mac OS® 8.6 to 9.2 Users

Connecting the Printer to your Macintosh® & Installing the PPD File

- 1 Turn off the printer's power switch.



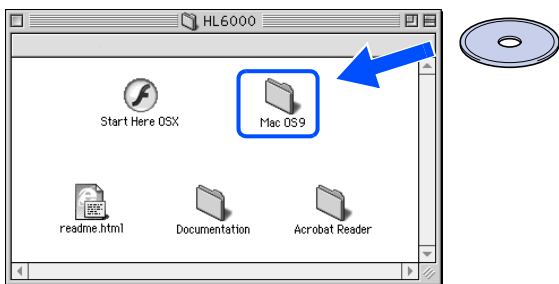
- 2 Connect the network interface cable to the printer, and then connect it to a free port on your hub.



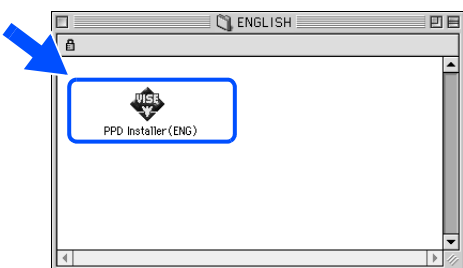
- 3 Turn on the printer's power switch.



- 4 Insert the CD-ROM for Macintosh® into your CD-ROM drive. Open the **Mac OS® 9** folder. Open your language folder.



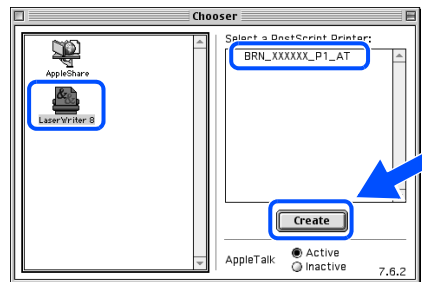
- 5 Double-click the **PPD Installer** icon to install the PPD file. Follow the on-screen instructions.



- 6 From the **Apple** menu, open the **Chooser**.



- 7 Click the **LaserWriter 8** *1 icon, and then select **BRN_xxxxxx_P1_AT**. *2 Click the **Create** button. Close the **Chooser**.



*1 If the Apple LaserWriter 8 Driver is not already installed on your system, you can download it from <http://www.apple.com>

*2 xxxxxx are the last six digits of the Ethernet address.



Network User's Guide Chapter 7.

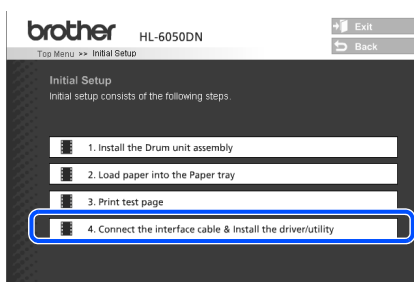
- OK! Setup is now complete.

For Network Interface Cable Users (For HL-6050DN)

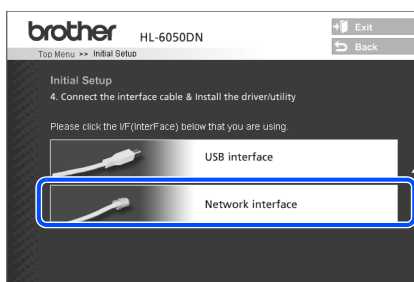
For Mac OS[®] X 10.1 / 10.2 Users

Connecting the Printer to your Macintosh[®] & Installing the PPD File

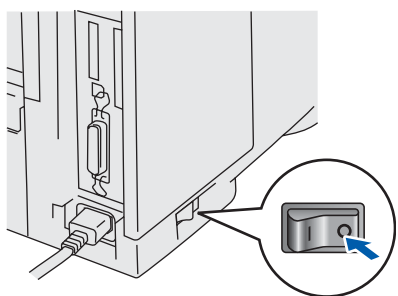
- 1 Click **Connect the interface cable & Install the driver/utility** from the **Initial Setup** menu.



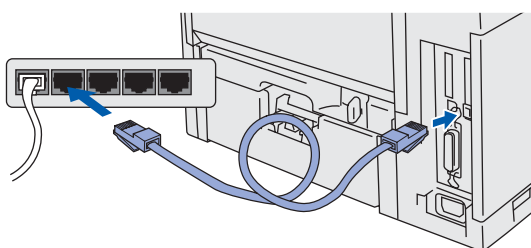
- 2 Select the **Network interface**.



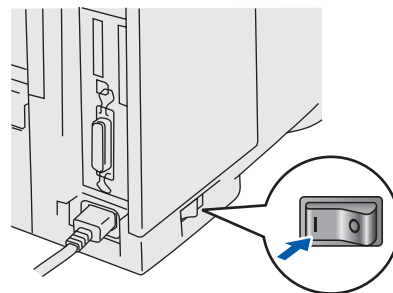
- 3 Turn off the printer's power switch.



- 4 Connect the network interface cable to the printer, and then connect it to a free port on your hub.



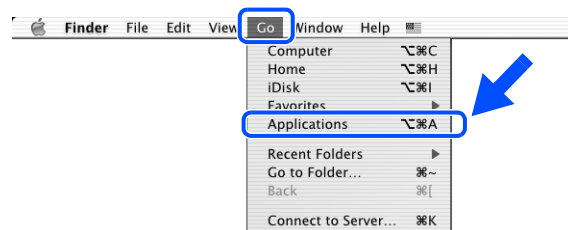
- 5 Turn on the printer's power switch.



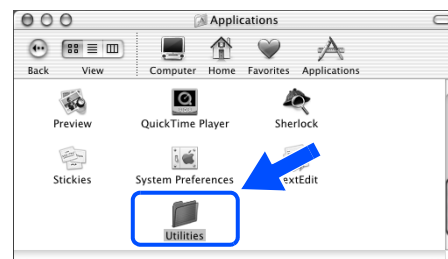
- 6 Click the **Install** button and follow the on-screen instructions.



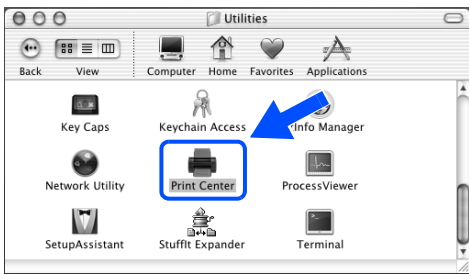
- 7 From the **Go** menu, select **Applications**.



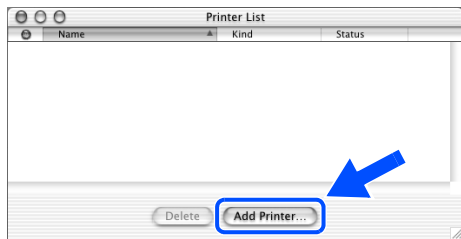
- 8 Open the **Utilities** folder.



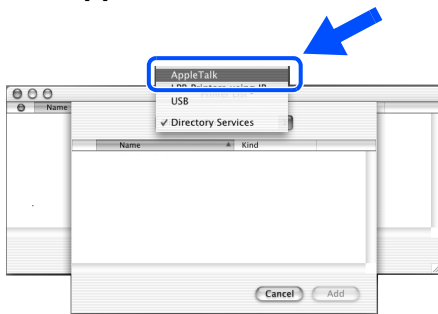
9 Open the **Print Center** icon.



10 Click the **Add Printer...** button.

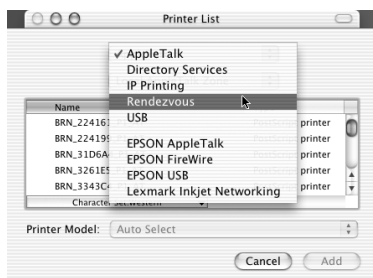


11 Select **AppleTalk**.



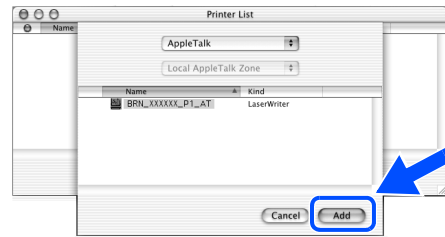
For Mac OS® X 10.2.4 or greater Users:
If you want to connect your printer using the Simple Network Configuration capabilities of Apple® Mac OS® X, select Rendezvous and then the **HL-6050D_DN** series.

→Go to 13



If there is more than one of the same model printer (HL6050DN) connected on your network, the Ethernet address (MAC address) will be displayed after the model name.

12 Select **BRN_XXXXXX_P1_AT**^{*1}, and then click the **Add** button.

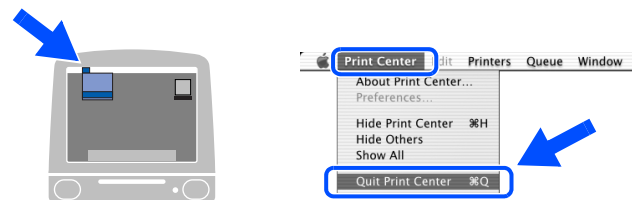


^{*1} xxxxxx are the last six digits of the Ethernet address.



Network User's Guide Chapter 7.

13 From the **Print Center** menu, select **Quit Print Center**.



OK! Setup is now complete.

Installing the BRAdmin Professional utility (Windows® Users Only)

The BRAdmin Professional utility is designed to manage your Brother network-connected devices.

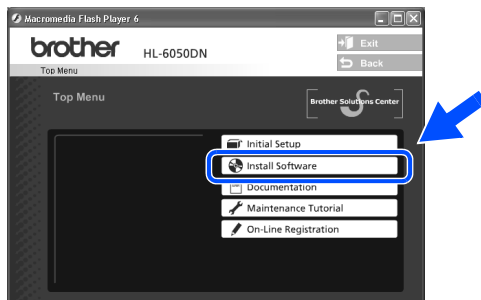
BRAdmin Professional utility can also be used to manage devices from other manufacturers whose products support SNMP (Simple Network Management Protocol).

For more information on BRAdmin Professional go to <http://solutions.brother.com>

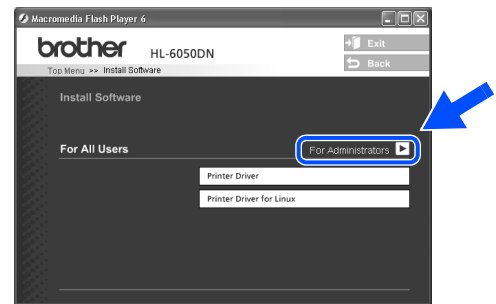
- 1 Insert the CD-ROM into your CD-ROM drive. The opening screen will appear automatically. Follow the on-screen instructions.



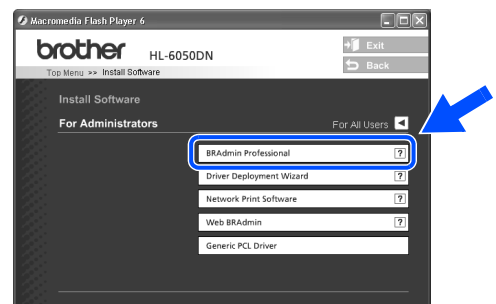
- 2 Click the **Install Software** icon on the menu screen.



- 3 Click **For Administrators**.



- 4 Click **BRAdmin Professional**.



The default password for the print server is '**access**'. You can use the BRAdmin Professional utility or a web browser to change this password.

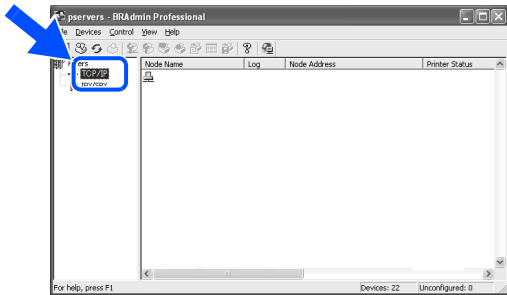
Web BRAdmin (Windows® Users Only)

Brother has also developed Web BRAdmin, an enterprise network software utility that enables the management of Brother and other SNMP-compliant devices in larger LAN/WAN environments.

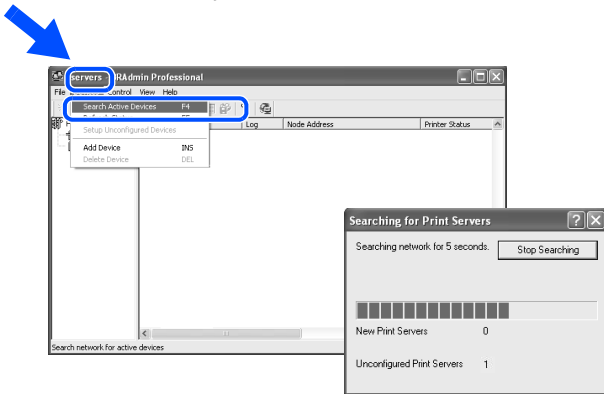
This software is Web server based and requires the installation of Microsoft's Internet Information Server and Sun's Java client software. To learn more about the Web BRAdmin software or to download it, please go to <http://solutions.brother.com/webbradmin>

Setting your IP Address, Subnet Mask and Gateway using BRAdmin Professional utility (Windows® Users Only)

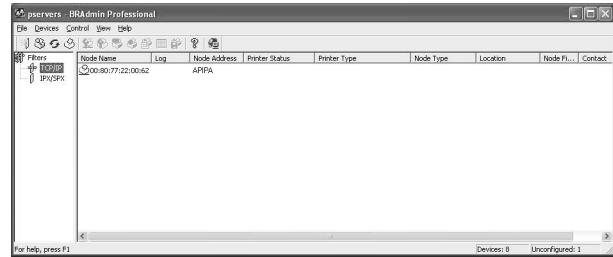
- 1 Start BRAdmin Professional, and select **TCP/IP**.



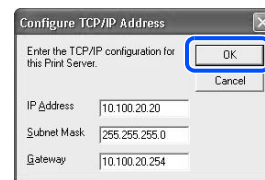
- 2 Select **Search Active Devices** from the **Devices** menu. BRAdmin will search for new devices automatically.



- 3 Double-click the new device.



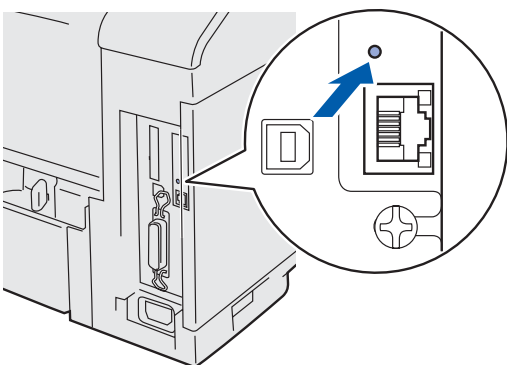
- 4 Enter the **IP Address**, **Subnet Mask** and **Gateway**, and then click the **OK** button.



- 5 The address information will be saved to the printer.

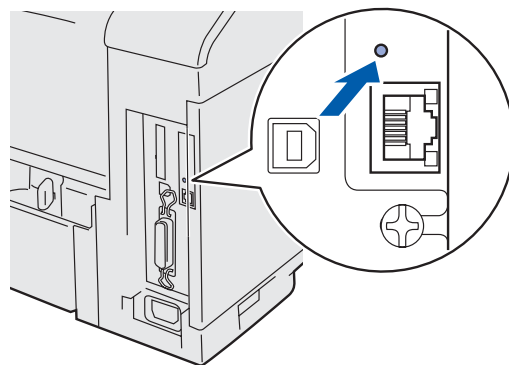
Print Printer Settings Page

To print the Printer Settings Page, use a fine ball point pen to hold down the Network Test Button for **less** than 5 seconds.



Factory Default Setting

If you wish to reset the print server back to its default factory settings (resetting all information such as the password and IP address information), use a fine ball point pen to hold down the Network Test Button for **more** than 5 seconds.



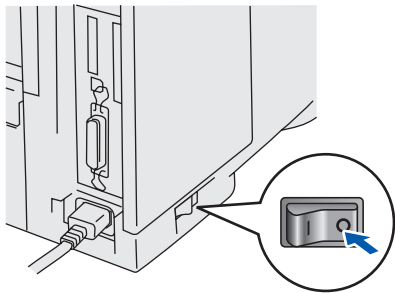
Shipment of the Printer

If for any reason you must ship your Printer, carefully package the Printer in the original packing to avoid any damage during transit. It is strongly recommended that you save and use the original packaging. The Printer should also be adequately insured with the carrier.

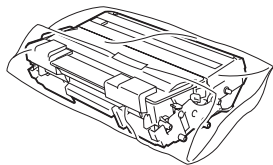


When shipping the Printer, the DRUM UNIT assembly and TONER CARTRIDGE must be removed from the Printer and placed in the plastic bag. Failure to remove the unit and place it in the plastic bag during shipping will cause severe damage to the Printer and may VOID THE WARRANTY.

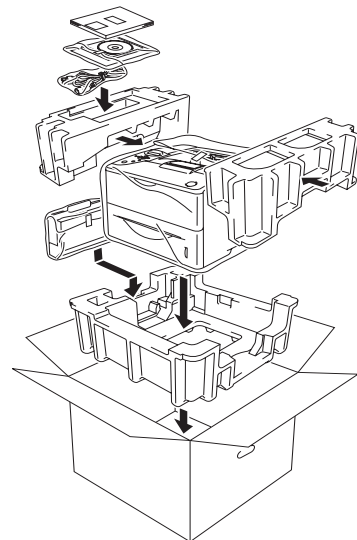
- 1 Turn off the printer's power switch, and then unplug the AC power cord.



- 2 Remove the drum unit assembly. Place it in the plastic bag and seal the bag completely.



- 3 Re-pack the printer.



Trademarks

The Brother logo is a registered trademark of Brother Industries, Ltd.

Windows® and Windows NT® are registered trademarks of Microsoft Corporation in the U.S and other countries.

Apple Macintosh®, iMac, LaserWriter, and AppleTalk are trademarks of Apple Computer, Inc.

HP, HP/UX, JetDirect and JetAdmin are trademarks of Hewlett-Packard Company.

UNIX is a trademark of UNIX Systems Laboratories.

Adobe PostScript® and PostScript3™ are trademarks of Adobe Systems Incorporated.

Netware is a trademark of Novell, Inc.

All other brand and product names mentioned in this User's Guide are registered

Compilation and Publication

Under the supervision of Brother Industries Ltd., this manual has been compiled and published, covering the latest product descriptions and specifications.

The contents of this manual and the specifications of this product are subject to change without notice.

Brother reserves the right to make changes without notice in the specifications and materials contained herein and shall not be responsible for any damages (including consequential) caused by reliance on the materials presented, including but not limited to typographical and other errors relating to the publication.

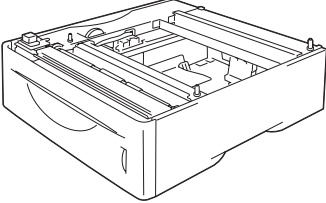
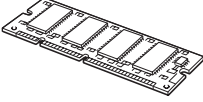
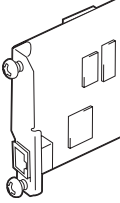
This product is designed for use in a Professional Environment.

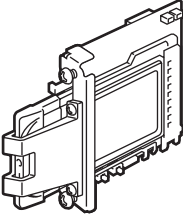
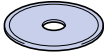
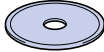
Options

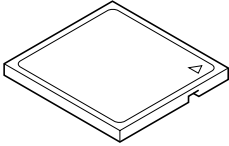
The printer has the following optional accessories. You can expand the capabilities of the printer by adding these items.



User's Guide Chapter 4.

Lower Tray Unit	DIMM Memory	Network Board (For HL- 6050 / 6050D)
LT-6000		NC-6100h
 <p>Second lower paper tray unit expands total input capacity up to 500 sheets.</p>	 <p>You can expand the memory by installing (100-pin DIMM) memory module.</p>	 <p>If you are going to connect the printer to your network, purchase the optional Network board.</p>

Wireless Print Server	Font Package	Barcode Font
NC-7100w	BS-3000	BT-1000
 <p>If you are going to connect the printer to your wireless network, purchase the optional Wireless print server.</p>	 <p>The optional font package (BS-3000) is the CD-ROM you need for installing the 136 PS3 Agfa and TrueType Fonts.</p>	 <p>The optional Barcode fonts package (BT-1000) is the CD-ROM you need for installing the Barcode Fonts.</p>

CompactFlash Card
 <p>The printer accepts a CompactFlash card for saving macros, print jobs, fonts and print logs. IBM Microdrive™ is not compatible.</p>

brother®

LJ1844001 ②
Printed in China