

HL-8050N Series Printers for Business



High-Speed Network-Ready Workgroup Laser Printer

Featuring...

- Up to 35ppm print speed
- High-quality printing at up to 1200x1200dpi resolution
- 64MB of memory standard, upgradeable to 576MB*
- PCL®6 and BR-Script3¹ emulations standard
- 700-sheet standard paper input capacity, expandable up to 1,800 sheets with optional trays* (1250 sheet standard input capacity on HL-8050TN and HL-8050DTN)
- 10/100 BaseT Ethernet, Parallel and USB interfaces standard
- Expansion options include lower paper trays, duplex unit, and offset catch tray*

HL-8050N

HL-8050TN

HL-8050DTN



At your side.™
brother®

HL-8050N series

High-Speed, High-Performance
Workgroup Laser Printers



Introducing the HL-8050N series

The HL-8050N series is ideal for workgroups needing a powerful and expandable monochrome laser printer.

Offering blazing fast print speed, versatile paper handling with expandability, and built-in networking with excellent compatibility, the HL-8050N series easily meets the varied demands of a busy office workgroup or department.



Users looking for a world-class workgroup printing solution will be glad they chose the high-speed, high-performance HL-8050N series monochrome laser printers from Brother.

World-class workgroup features

Network-ready and network-friendly, the HL-8050N series offers advanced features and tools that make it easy to set-up and begin using the printer immediately.

It's ready to connect to your network with a built-in 10/100 BaseT Ethernet print server, and a variety of powerful network management tools.

These powerful network management tools allow a range of flexibility for managing the printer, as well as other SNMP compliant printers either departmentally, locally or from an enterprise perspective.

The HL-8050N series also features a wide variety of industry-standard emulations including PCL®6, IBM® Proprinter, Epson® FX -850 and HP-GL. Users of popular graphic design programs will appreciate its BR-Script3 (PostScript® 3™ language emulation) support.

Novell



Versatile paper handling and expansion options*

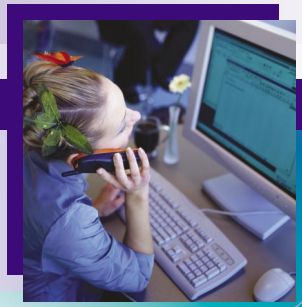
The HL-8050N offers 700-sheet input capacity via two built-in paper trays – a 550-sheet paper tray and a 150-sheet tray. The two paper trays make it possible to store letter-size paper in one and legal size in the other for paper handling flexibility. The HL-8050TN and HL-8050DTN offer an additional 550 sheet tray for enhanced paper handling flexibility.

Up to two 550-sheet trays can be added, bringing the total input capacity to 1,800 sheets. Any of the built-in or optional paper trays can be set to automatically detect different paper sizes in addition to letter and legal.

An optional offset catch tray increases the printer's output capacity from 500 sheets to 1,000 sheets while also offsetting the stacks of different print jobs so they do not have to be separated manually.

Other options include a duplex unit (standard on the HL-8050DTN) to enable two-sided printing, and upgrading the memory from 64MB up to a maximum of 576MB using industry-standard 100-pin DIMM modules.*

Finally, the printer can also accept a CompactFlash™ card as well as optional bar code and PostScript® 3™ fonts.*



Fast,
expandable

Increased productivity and low total cost of ownership

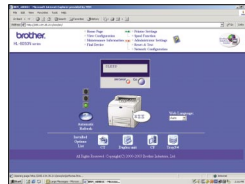
The HL-8050N series arrives with an up to 10,000-page toner cartridge as standard. It's high-capacity replacement cartridge delivers up to 17,000 pages.*

Further reducing its long-term operating costs is a user-replaceable fuser unit. This feature, along with the high-capacity replacement toner cartridge, helps minimize the printer's overall total cost of ownership.

Excellent connectivity and compatibility

Any user in your workgroup can connect and print to the HL-8050N series via its automatic emulation and interface switching.

The HL-8050N series has a built-in 10/100 BaseT Ethernet print server that allows you to remotely monitor printer functions via your Web browser.



Advanced users can also utilize Brother's exclusive BRAdmin Professional software or Web-BRAdmin³ to manage any network-connected Brother printer plus any SNMP-compliant printers in TCP/IP and IPX/SPX environments.

For compatibility with leading office applications, a complete set of Windows[®] and Mac[®] drivers assures that everyone in your workgroup can print to the HL-8050N series.

Advanced print functions

The HL-8050N series offers a number of advanced printing functions that provide a higher level of protection for organizations concerned with the security of their printed materials.

These include the ability to implement password-protected secure printing, as well as 5 different job spooling print functions to protect the confidentiality of printed materials.

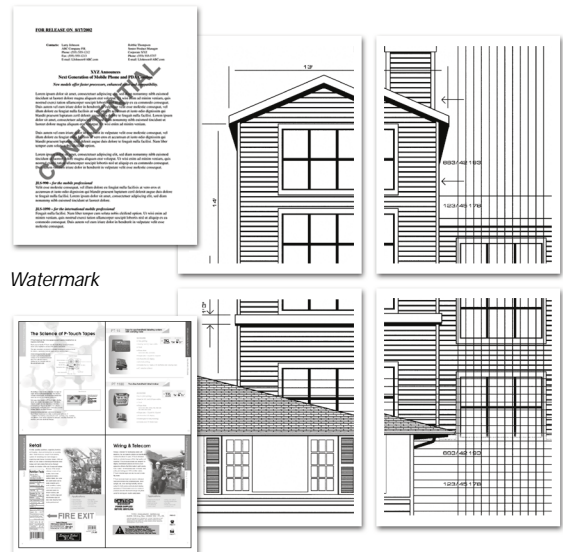


The HL-8050N series provides the means to password protect documents to ensure that only the person who is supposed to see them, actually does.

More advanced printing features

The HL-8050N series offers many additional advanced features that will exceed your expectations and reaffirm its value. These include:

- IPP Printing
- Poster Printing
- Secure Printing
- Watermark Printing
- Toner Save Mode
- N-Up Printing
- Job Reprint
- Job Cancel
- Booklet Printing
- Manual Duplex



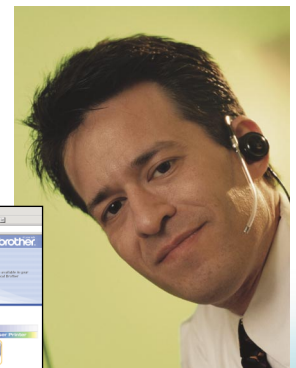
Watermark

N-Up

Poster

Service and support are part of the package

We provide toll-free technical support, a one-year on site limited warranty, interactive animated help files, and the Brother Solutions Center (<http://solutions.brother.com>), all backed by our nationwide network of authorized customer care centers.



HL-8050N Series Printers for Business



The HL-8050N series are high-speed, high performance monochrome laser printers that can easily expand and adapt to meet your workgroup's needs.

Fast printing, excellent connectivity, and expandability make these printers a great choice for your growing workgroup.

UP TO
35
PPM

Novell

Yes
TESTED
&
APPROVED

Mac

Designed for
Microsoft®
Windows®XP

UP TO
1200x1200
DPI

Energy Star

CERTIFIED
USB

Use only
GENUINE
brother
supplies

Other laser printers from Brother:

HL-7050 SERIES

The HL-7050 Series monochrome laser printers offer up to 30ppm print speed, a very low cost per page and expandable paper handling.

*Additional purchase required. †PostScript®3™ language emulation. ‡Cables not included. †Download at <http://solutions.brother.com>. Requires dedicated IIS Server. ‡Supply yields are based on letter/A4 size media at approximately 5% coverage. PostScript is a trademark of Adobe Systems, Inc. Mac and the Mac logo are trademarks of Apple Computer, Inc., registered in the U.S. and other countries. Microsoft, Windows, and the Windows logo are trademarks, or registered trademarks of Microsoft Corporation in the United States and/or other countries. All brand and product names are trademarks or registered trademarks of their respective companies. Printed in Canada All specifications subject to change without notice.

HL-8050N Series Product Specifications

Model

- ◆ **Print Technology:**
Electrophotographic laser
- ◆ **Print Speed:**
Up to 35ppm
- ◆ **Time to First Page:**
< 9 seconds
- ◆ **Resolution:**
300x300dpi; 600x600dpi; 1200x1200dpi
- ◆ **Memory:**
64MB, up to 576MB via optional 100-pin DIMM*
- ◆ **Processor:**
300MHz
- ◆ **Printer Emulations:**
PCL®6, BR-Script3[†], IBM Proprinter XL, Epson FX-850, HP-GL
- ◆ **Resident Fonts:**
PCL: 66 scalable, 12 bitmap, 11 bar code
BR-Script3[†]: 66 scalable fonts
- ◆ **Storage Options*:**
CompactFlash Memory
- ◆ **Interfaces[‡]:**
10/100 BaseT Ethernet, IEEE 1284 Parallel, USB 1.1

Paper Handling

- ◆ **Standard Input:**
150-sheet paper tray
550-sheet paper tray
- ◆ **Optional Input*:**
Up to 1,800-sheet capacity via (2) 550-sheet paper trays
- ◆ **Standard Output:**
500 sheets face down, 70 sheets face up
- ◆ **Optional Output*:**
500-sheet offset catch tray
- ◆ **Paper Sizes:**
Letter, Legal, Exec., A4, A5, A6, B5, B6
Envelopes: Com 10, DL, B5, C5
- ◆ **Media Types:**
Plain Paper, Bond, Recycled, Envelopes, Labels, Transparencies
- ◆ **Media Weights:**
Standard paper trays - 16 to 57 lbs.

Software

- ◆ **Printer Drivers:**
PCL: Windows® 95/98/Me/NT 4.0/2000 and XP
Mac: OS 8.6-9.2, OS X, 10.1/10.2.1-10.3 or greater
PostScript® 3 PPD file
- ◆ **Other Software:**
Interactive Help, Driver Deployment Wizard

Physical Dimensions

- ◆ **Size / Weight (Base Model) :**
422mm(w) x 465mm(d) x 404mm(h) / 20.50kgs.

Networking

- ◆ **Interface:**
10/100 BaseT Ethernet
- ◆ **Multi-Protocol Support:**
TCP/IP, IPX/SPX, AppleTalk, Apple Rendezvous™, DLC/LLC, NetBEUI
- ◆ **Network Management Tools:**
Web-BRAdmin[‡], BRAdmin Professional, Web-based Management

Electrical

- ◆ **Power Requirements:**
120 VAC +/- 10% 50/60 Hz
- ◆ **Power Consumption:**
Printing < 593W (average)
Standby < 105W
Sleep mode < 12W

Environmental

- ◆ **Temperature:**
10°C to 32.5°C
- ◆ **Humidity:**
20% - 80% (without condensation)
- ◆ **Noise:**
Printing: < 54dB; Standby: < 27dB

Service

- ◆ **Warranty:**
One-year on-site limited warranty
- ◆ **Service:**
One-year limited parts and labor

Supplies and Yields⁴

- ◆ **Replacement Toner:**
TN-1700: up to 17,000 pages @ approx. 5% coverage
- ◆ **Fuser unit:**
FP-8000: up to 200,000 pages

Options & Accessories*

Item	Part Number
Toner Cartridge	TN-1700
Fuser Unit	FP-8000
Duplex Unit	DX-8000
Offset Catch Tray	CT-8000
Lower Paper Tray Unit	LT-8000
PS/3 Font Upgrade	BS-3000
Bar Code Font Upgrade	BT-1000

Consult your Brother representative for more details.
For more information, please visit our Web site
at www.brother.ca or call 1-877-BROTHER.

© 2003 1, rue Hôtel de Ville,
Dollard-des-Ormeaux,
Québec, H9B 3H6.

At your side.™
brother®
www.brother.ca