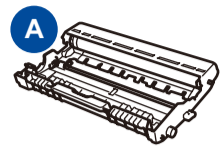




Watch our FAQ Videos for help with setting up your Brother machine: solutions.brother.com/videos.

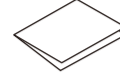
Unpack the machine and check the components



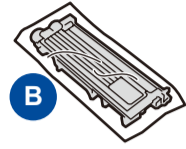
A
Drum Unit
(Pre-installed)



AC Power Cord
(only for certain models)



Quick Setup Guide



B
Inbox/Starter Toner Cartridge



CD-ROM



Product Safety Guide

Read the Product Safety Guide first, then read this Quick Setup Guide for the correct installation procedure. Manuals in Spanish for this model are available on the enclosed CD-ROM. (USA only)
Manuales en Español para este modelo están disponibles en el CD-ROM incluido. (sólo en Estados Unidos)

NOTE:

- The components included in the box and the AC power plug may differ depending on your country.
- The available connection interfaces vary depending on the model.
- The illustrations in this Quick Setup Guide are based on the HL-L2365DW.
- You must purchase the correct interface cable for the interface you want to use.

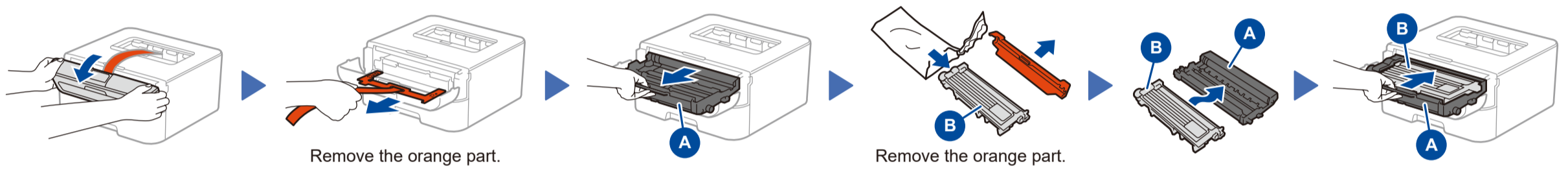
USB cable

We recommend using a USB 2.0 cable (Type A/B) that is no more than 2 meters (6 feet).

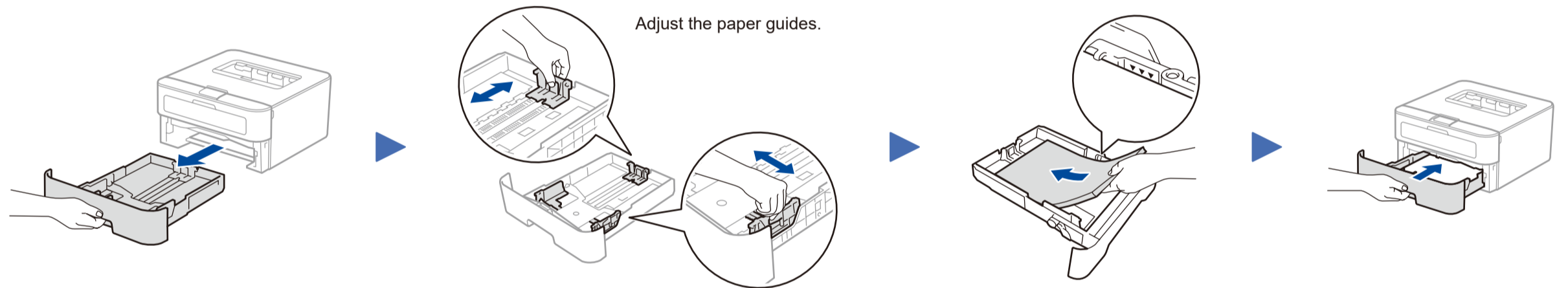
Network cable

Use a straight-through Category 5 (or greater) twisted-pair cable for 10BASE-T or 100BASE-TX Fast Ethernet Network.

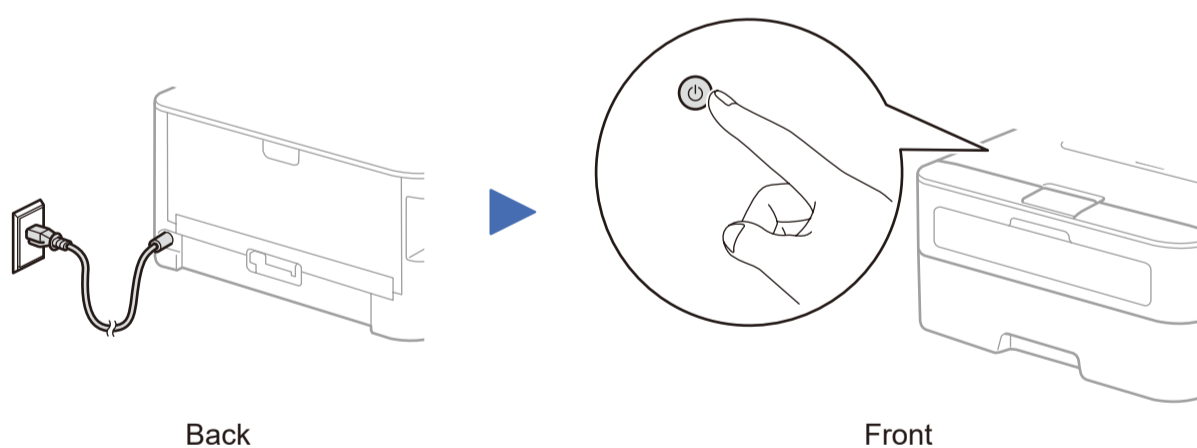
1 Remove the packing materials and install the toner cartridge



2 Load paper in the paper tray



3 Connect the power cord and turn on the machine



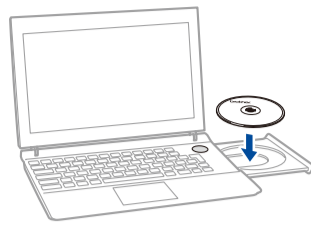
4 Select your language (Only for certain models)

1. Press ▼ or ▲ to select **General Setup**, and then press **OK**.
2. Press **OK** to select **Local Language**.
3. Press ▼ or ▲ to select your language, and then press **OK**.

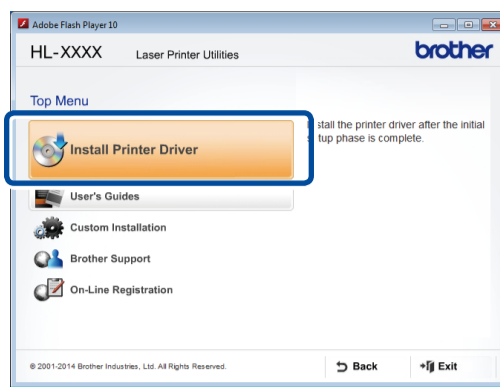
5 Connect the machine to your computer/mobile device

- Windows® PC with a CD-ROM drive, go to step **5A**
- Windows® PC without a CD-ROM drive, go to step **5B**
- Macintosh, go to step **5B**
- Mobile device users with a WPS/AOSS™-supported access point/router, go to step **5C**

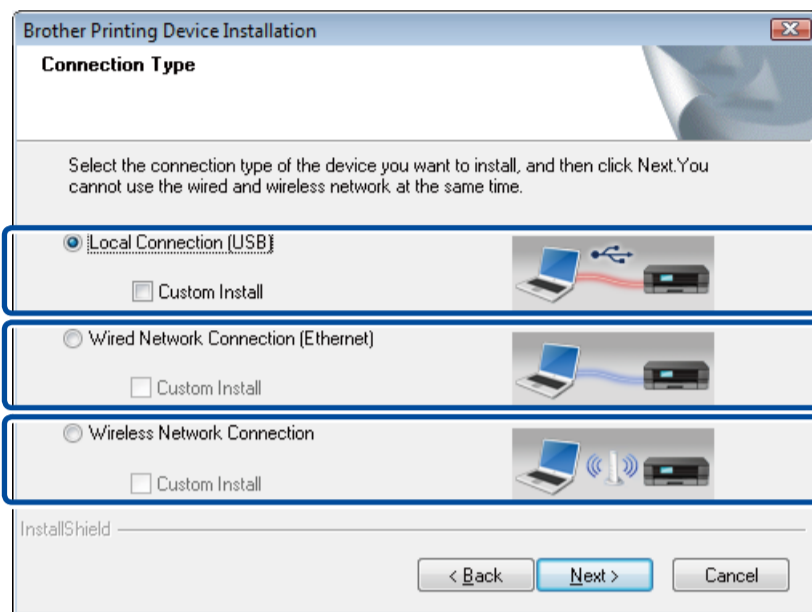


**NOTE:**

If the Brother screen does not appear automatically, go to **Computer (My Computer)**.
(For Windows® 8: click the (File Explorer) icon on the taskbar, and then go to **Computer**.)
Double-click the CD-ROM icon, and then double-click **start.exe**.



Follow the on-screen instructions until the **Connection Type** screen appears.

Connection Type

For USB Connection

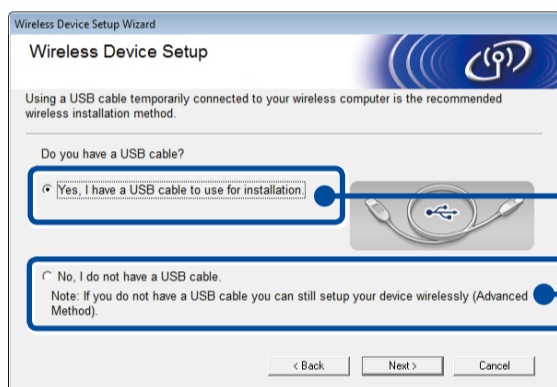
For Wired Network Connection
Connect a network cable first.

For Wireless Network Connection
We recommend preparing a USB cable to use temporarily during the wireless setup.

Follow the on-screen instructions to continue installation.

Finish**NOTE:**

If connection is unsuccessful, repeat this step.

**Wireless Network Connection****[Recommended]**

Select this option if you have a USB cable to use temporarily for wireless setup.

Select this option if you do not have a USB cable.

NOTE:

If connection is unsuccessful, repeat this step.

Follow the on-screen instructions to continue installation.

Finish**For Network Users: Important Notice for Network Security**

The default Web Based Management password is located on the back of the machine and marked "Pwd". We recommend immediately changing the default password to use network tools/utilities securely and to protect your machine from unauthorized access.



Download the full driver and software package from the Brother Solutions Center.

(For Windows®) solutions.brother.com/windows

(For Macintosh) solutions.brother.com/mac

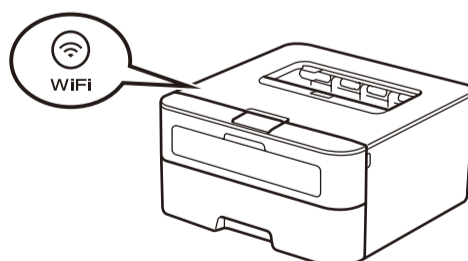
After you download the driver and software package, follow the on-screen instructions until the **Connection Type** screen appears. Refer to **5A Configuration using the CD-ROM (Windows®)**.



If your wireless LAN access point/router supports automatic wireless (one-push) setup (WPS/AOSS™), you can set up your machine without using a computer.



Press the WPS or AOSS™ button on your wireless LAN access point/router.



Press the **WiFi** button on your machine.

Wireless setup is now complete.

NOTE:

Before you can use your machine with your mobile device, download "Brother iPrint&Scan."

**Print using your mobile device**

Download "Brother iPrint&Scan" to start using your machine with mobile devices.



solutions.brother.com/ips