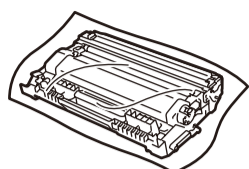
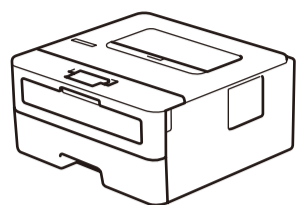
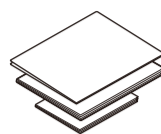




Unpack the machine and check the components



Drum Unit and In-box Toner Cartridge



Quick Setup Guide
Reference Guide (only for certain models)
Product Safety Guide



Brother Installation Disc



AC Power Cord
(only for certain models)

NOTE:

- The components included in the box may differ depending on your country.
- Interface cables are not included. You must purchase the correct interface cable if you require one.

USB cable

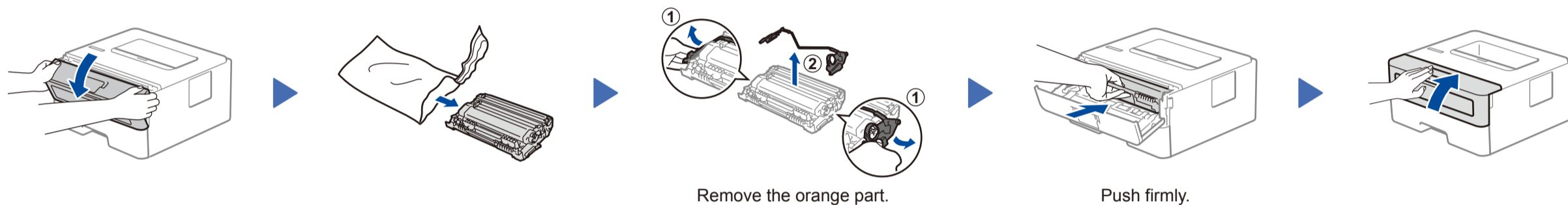
We recommend using a USB 2.0 cable (Type A/B) that is no more than 2 metres long.

- The illustrations in this *Quick Setup Guide* show the HL-L2310D.
- The *Reference Guide* is available on the provided Brother Installation Disc in countries where it is not included in the box.



Watch our Video FAQs for help with setting up your Brother machine: support.brother.com/videos.

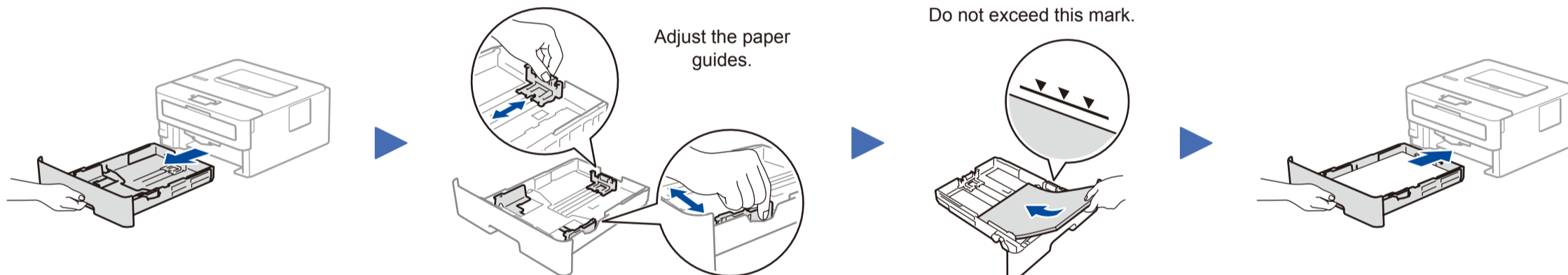
1 Remove the packing materials and install the drum unit and toner cartridge assembly



Remove the orange part.

Push firmly.

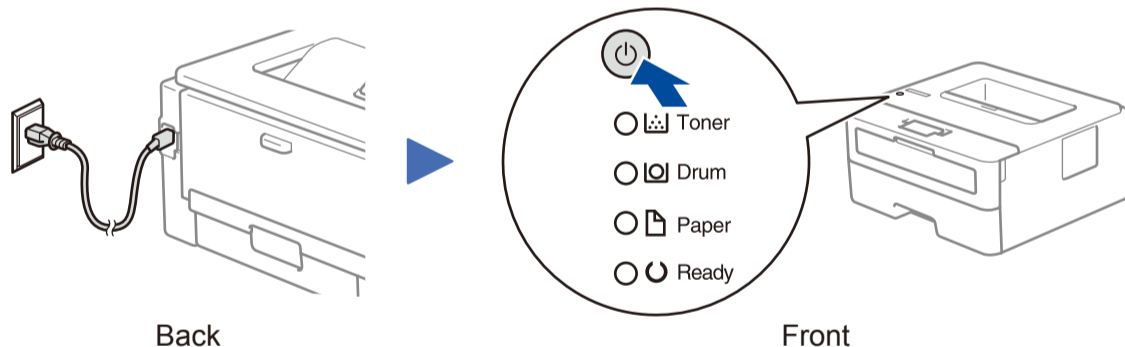
2 Load paper in the paper tray



Adjust the paper guides.

Do not exceed this mark.

3 Connect the power cord and turn the machine on



Back

Front

- Power
- Toner
- Drum
- Paper
- Ready

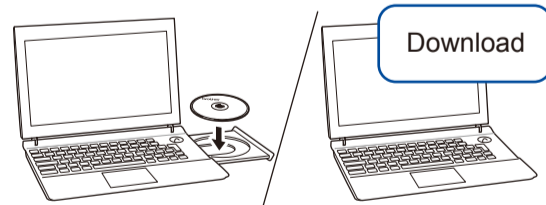
Printer LED Indications

Blinking: ON: or OFF:

	Toner Low ¹	Replace Toner	Drum End Soon ¹	Replace Drum	Drum ! ²	Paper Jam / Cover is Open ²	No Paper
Toner							
Drum							
Paper							
Ready							

- The yellow LED will blink in a pattern of ON for 2 seconds and then OFF for 3 seconds.
- The LED will blink ON and OFF at 0.5 second intervals.

4 Connect your computer



Put the installation disc into your CD/DVD drive, or download the Full Driver & Software Package at:

For Windows®: support.brother.com/windows
For Mac: support.brother.com/mac

If you are using a recently released operating system on your computer, visit the above websites for updated driver and software information.

Follow the on-screen instructions and prompts.

For Windows®:
If the Brother screen does not appear automatically, go to **Computer (This PC)**. Double-click the CD/DVD-ROM icon, and then double-click **start.exe**.

For Mac:
For full driver functionality, we recommend choosing the **CUPS driver** when adding a printer.

Finished

Can't Connect? Check the following:



USB connection

Disconnect the cable.

Restart your machine and computer, and then go to **4**.

If still not successful, visit support.brother.com for FAQs & Troubleshooting.