

MFC-4800 Quick Setup Guide

brother

THANK YOU!

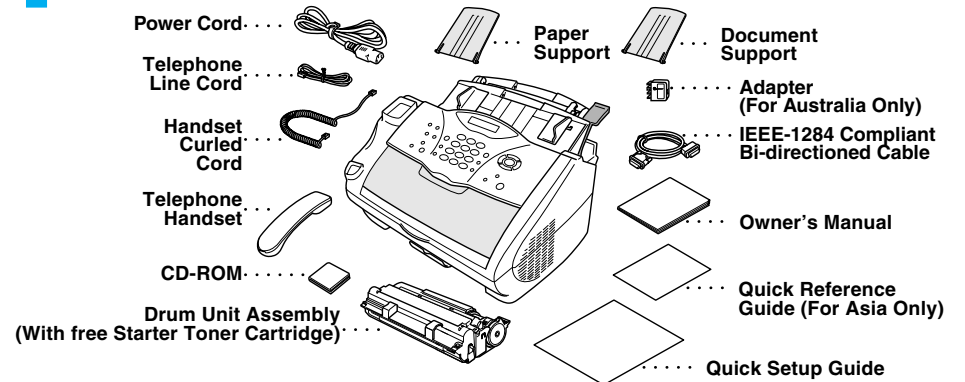
... FOR PURCHASING YOUR BROTHER MACHINE.
WE ARE SURE YOU WILL BE IMPRESSED WITH THE CONVENIENT WAY THAT YOUR NEW MACHINE PERFORMS SO MANY TASKS WITH GREAT RESULTS!

Follow these simple instructions in numerical order.
For greater detail, consult your user guide and CD-ROM.

Alternatively, If you cannot solve a problem:
Refer to **Frequently Asked Questions (FAQ's)** on Brother Solutions Web Site:

URL: <http://solutions.brother.com>

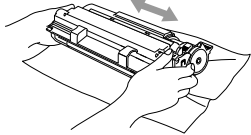
1 Packing List



Keep the packing materials for possible future transport. If you do not pack the machine properly, it may void your warranty.

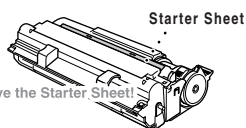
2 Install the Drum Unit

A. Unpack the drum unit assembly, and gently rock it from side to side five or six times to distribute the toner evenly inside the cartridge.

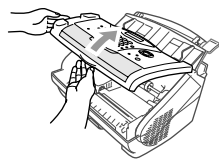


To prevent damage to the drum, do not expose it to light for longer than a few minutes.

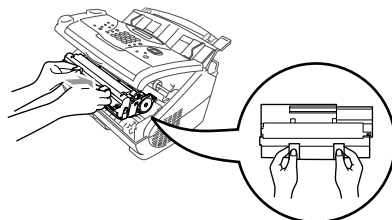
Do NOT remove the clear plastic starter sheet this will be ejected while the MFC is warming up.



B. Open the top cover of the MFC.



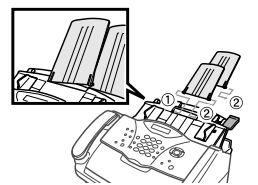
C. Holding the drum unit by its handles, insert it into the MFC.



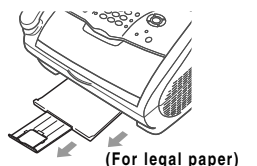
D. Close the top cover.

3 Attach the Plastic Supports and Pull out the Paper Tray

A. Attach the plastic document and paper support to the multi-purpose sheet feeder.

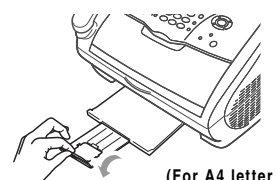


B. Pull out the paper tray and the extension.



(For legal paper)

C. If your paper size is A4 or Letter, extend the paper stopper by pulling it toward you.



(For A4 letter paper)

4 Load Paper

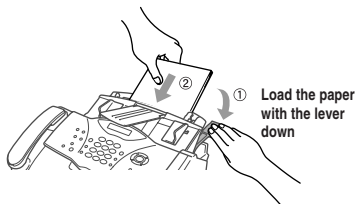
A. Adjust the guides to the position for the paper size you are using.

B. Fan the paper well.



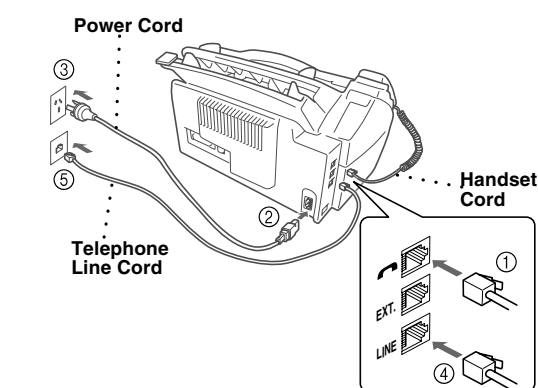
Press and slide

C. Push down the paper lever. Load the paper (with the lever down). Make sure the print side is toward the fax machine and the paper level is stacked below the paper mark. The feeder can hold up to 200 sheets of paper, or up to 10 envelopes.



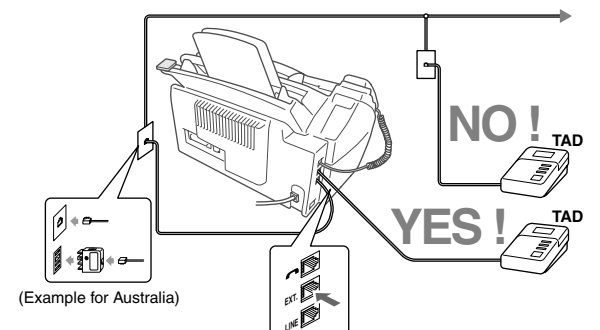
Load the paper with the lever down

5 Install Handset, Power Cord and Phone Line



Do Not connect the Parallel or USB Cable.

6 If you are sharing one phone line with an external telephone answering device, connect it now to the external jack.



Note: Please select "TAD" on your machine if you have an external answering device. (For more details, see page Connecting an External Telephone Answering Device (TAD) in Owner's Manual.)

7 Select a Receive Mode

Choose the mode that best suits your needs by pressing **Receive Mode** repeatedly until the screen displays the setting you want to use.

FAX ONLY

For use with a dedicated fax line.
Every call is answered as a fax.

FAX/TEL

For receiving fax and voice calls on one line.
The MFC answers every call and receives a fax or double rings for you to pick up a voice call.

TAD: ANSWER MACH.

For use with an external answering device.
The TAD answers every call and stores voice messages.
Fax messages are printed.

Make sure that TAD is connected to external jack.

MANUAL

You control the phone line and must answer every call yourself.

For more details, see Select a Receive Mode in Owner's Manual.

8 Set Date and Time

A. Press **Menu/Set**, (1), (1).

1. DATE/TIME

YEAR:XX

B. Enter the last two digits of the year and press **Menu/Set**.

MONTH:XX

C. Enter two digits for the month and press **Menu/Set**.

DAY:XX

D. Enter two digits for the day and press **Menu/Set**.

TIME:XX:XX

E. Enter the time in 24-hour format and press **Menu/Set**.

F. Press **Stop/Exit**.

9 Set Station ID

A. Press **Menu/Set**, (1), (2).

2. STATION ID

FAX:

B. Enter your fax number, then press **Menu/Set**.

TEL:

C. Enter your telephone number, then press **Menu/Set**.

NAME:

D. Enter your name using the dial pad and the chart below, then press **Menu/Set**. Use the right arrow to create spaces.

E. Press **Stop/Exit**.
For more details, see Entering Text in Owner's Manual.

Key	once	twice	three times	four times	five times
2	A	B	C	2	A
3	D	E	F	3	D
4	G	H	I	4	G
5	J	K	L	5	J
6	M	N	O	6	M
7	P	Q	R	7	P
8	T	U	V	8	T
9	W	X	Y	9	W

Setting Up the MFC and PC to Work Together

Before You begin

- You must set up the hardware and install the driver before you can use your MFC as a printer and scanner with your applications.
- Please see the README.WRI file in the root directory of the CD-ROM for last-minute important installation and troubleshooting information.
- Please purchase the appropriate interface cable you intend to use (Parallel or USB).
- If you have any problem for installation, visit us at: <http://solutions.brother.com>

! Use only a shielded parallel interface cable that is IEEE 1284-compliant and/or a USB cable that is no longer than 6 feet long (1.8 meters).

Follow the instructions in this guide for your operating system and interface.

For Windows® 95/98/98SE/Me/2000 Users

Step 1. Unplug the MFC from the AC outlet and disconnect your MFC from your computer if you already connected an interface cable.

Step 2. Turn on your computer.

For Windows® 2000 Professional, you must be logged on as the Administrator.

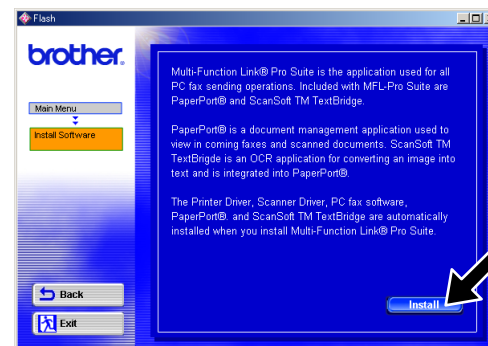
Step 3. Insert the CD-ROM into the CD-ROM drive. If the model name screen appears, click on your model name. The CD-ROM main menu will appear.



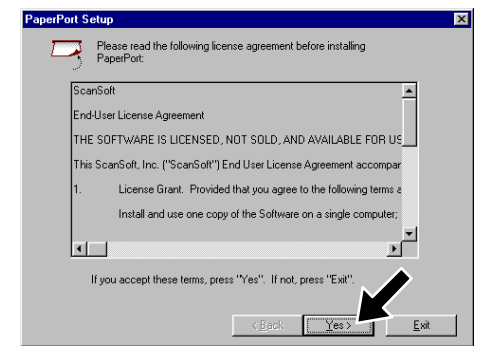
1. Click Install Software.



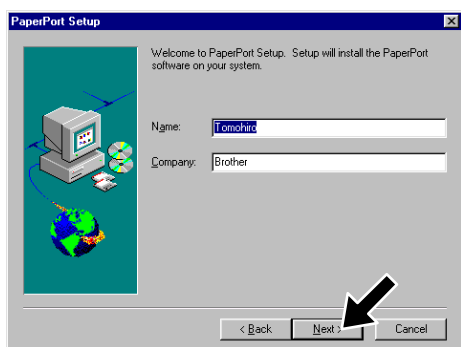
2. Click Multi-Function Link® Pro Suite in Main Application. *1



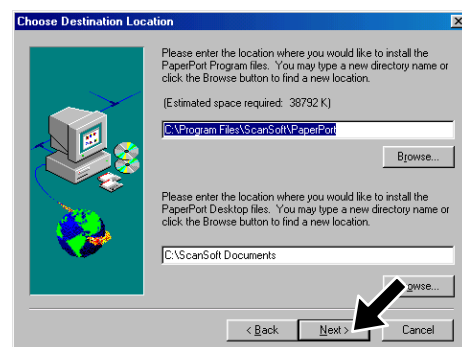
3. Click Install.



4. The InstallShield Wizard Setup window will appear briefly, followed by the PaperPort® Setup window. Click Yes.



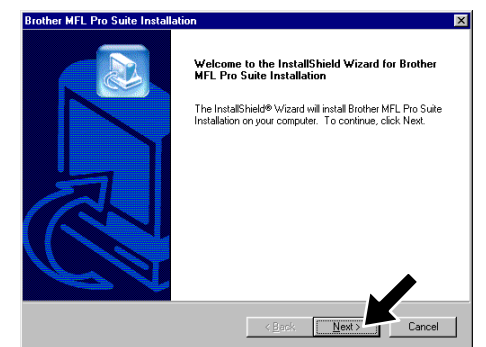
5. When the PaperPort® Setup window displays your Name and Company, either change or accept them, and then click Next.



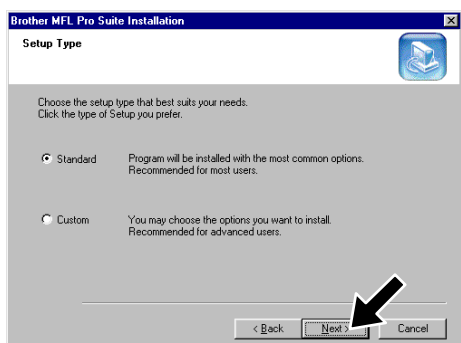
6. When the Choose Destination Location window displays the path where the PaperPort® files will be installed, either change or accept, and then click Next.



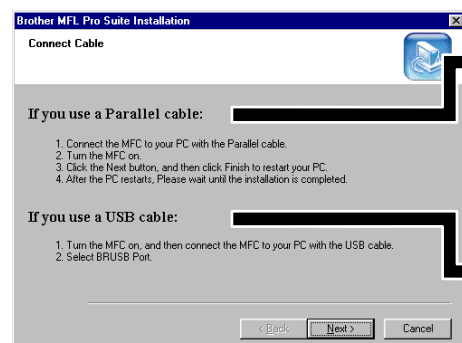
7. When Register Today screen appears, click Next. This is registration for PaperPort®. Follow the instructions.



8. When the Brother MFL Pro Suite Installation window appears, click Next to begin installing the Multi-Function Link® Pro Suite. *2

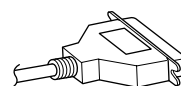


9. When the Setup Type window appears, select Standard, and then click Next. The application files will be copied to your computer.

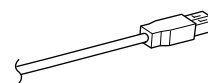


10. The Connect Cable window will appear.

For Parallel



For USB



Please see NEXT PAGE

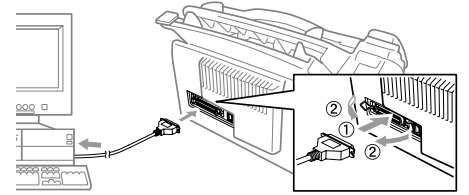
*1 Multi-Function Link® Pro Suite includes Printer Driver, Scanner Driver, ScanSoft™ PaperPort®, ScanSoft™ Text Bridge®, PC-FAX software, Remote Setup and True Type fonts. PaperPort® is a document management application for viewing scanned documents. ScanSoft™ TextBridge®, which is integrated into PaperPort®, is an OCR application that converts an image into text and inserts it into your default word processor.

*2 If an error message appears during the installation process, or you have previously installed MFL Pro Suite, you will first have to uninstall it. From the Start menu, select Programs, Brother, Brother MFL Pro Suite, Uninstall, and then follow the instructions on the screen.

*3 Even if you select NO, later you will be able to launch the Brother Control Center to use the Scan keys. See AutoLoad the Brother Control Center, Chapter 14 in the On-Line Documentation (Owner's Manual) on the CD-ROM.

Step 4. Connect the MFC to your PC with Parallel Cable.

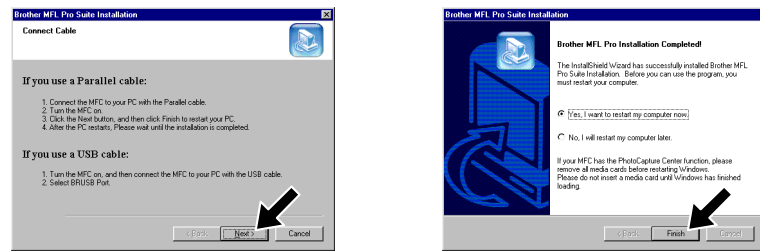
- Connect the parallel interface cable to the parallel interface port of the MFC and secure the wire clips.
- Connect the interface cable to the printer port of the computer and secure it with the two screws. For the location of your computer's parallel printer port, see the User's Guide for your computer.



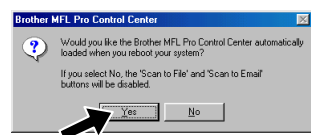
Step 5. Turn on the MFC by plugging in the power cord.

Step 6. The installation of the Brother driver will automatically start. Follow the instructions on the screen.

(For Windows® 95/98/98SE/Me Users)



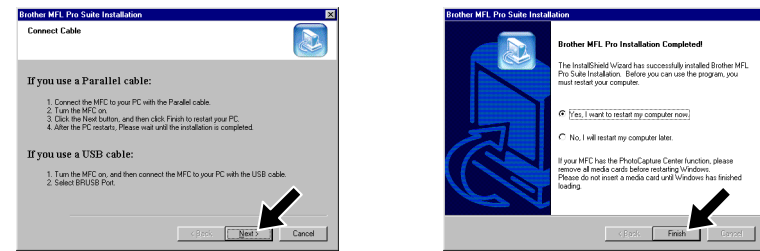
- In the Connect Cable window, click **Next**.
- When the above screen appears, click **Finish** and wait as the PC restarts Windows® and continues the installation.



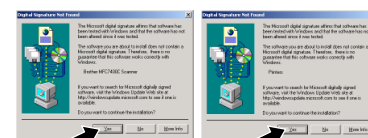
- Click **Yes** to have the Control Center loaded each time Windows® is started. The Control Center will appear as an icon in the task tray. If you click **No** the Scan keys on the MFC will be disabled. *3

The Brother PC fax, Printer and Scanner drivers have been installed and the installation is now complete.

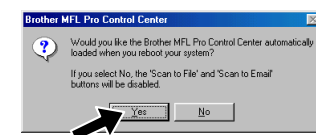
(For Windows® 2000 Professional User)



- In the Connect Cable window, click **Next**.
- When the above screen appears, Click **Finish** and wait as the PC restarts Windows® and continues the installation.



- When the **Digital Signature Not Found** dialog boxes appear, click **Yes** to install the driver.



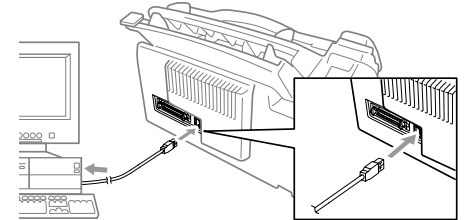
- Click **Yes** to have the Control Center loaded each time Windows® is started. The Control Center will appear as an icon in the task tray. If you click **No** the Scan keys on the MFC will be disabled. *3

The Brother PC fax, Printer and Scanner drivers have been installed and the installation is now complete.

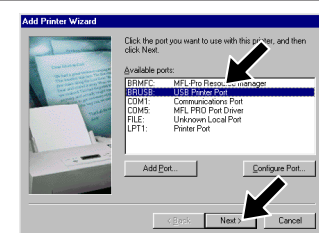
Step 4. Turn on the MFC by plugging in the power cord.

Step 5. Connect the MFC to your PC with the USB cable (it will take a few seconds for the installation screen to appear).

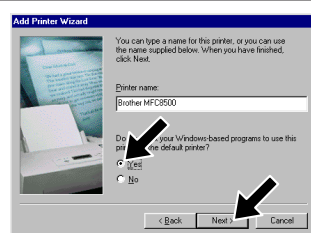
Step 6. The installation of the Brother driver will automatically start. Follow the instructions on the screen.



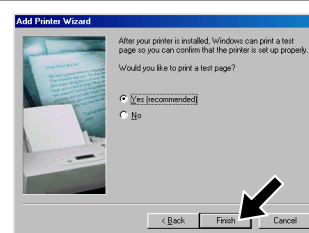
(For Windows® 98/98SE/Me Users)



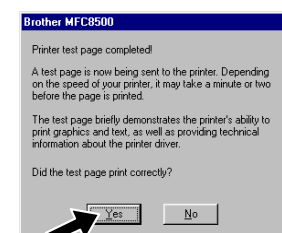
- In the Add Printer Wizard window, select **BRUSB: USB Printer Port**, and then click **Next**.



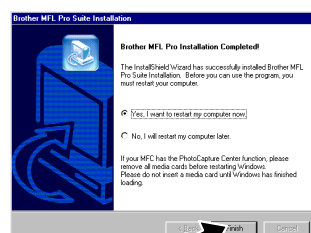
- Accept the default Printer name by selecting **Yes**, and then click **Next**.



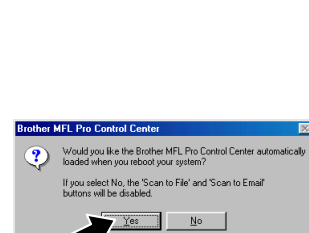
- Select **Yes (recommended)**, and then click **Finish**. A test page will be printed so you can check the print quality.



- If the test page is printed correctly, click **Yes**. If you click **No**, follow the prompts on the screen to correct the problem.



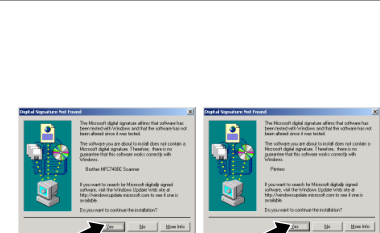
- Select **Yes** to restart your computer, and then click **Finish**.



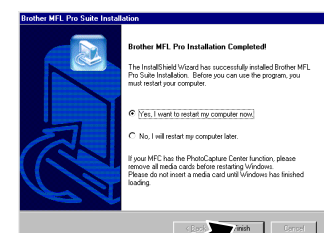
- Click **Yes** to have the Control Center loaded each time Windows® is started. The Control Center will appear as an icon in the task tray. If you click **No** the Scan keys on the MFC will be disabled. *3

The Brother PC fax, Printer and Scanner drivers have been installed and the installation is now complete.

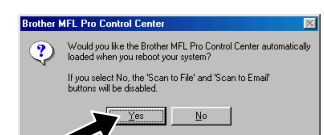
(For Windows® 2000 Users)



- When the **Digital Signature Not Found** dialog boxes appear, click **Yes** to install the driver.



- Select **Finish** to restart your computer.



- Click **Yes** to have the Control Center loaded each time Windows® is started. The Control Center will appear as an icon in the task tray. If you click **No** the Scan keys on the MFC will be disabled. *3

The Brother PC fax, Printer and Scanner drivers have been installed and the installation is now complete.

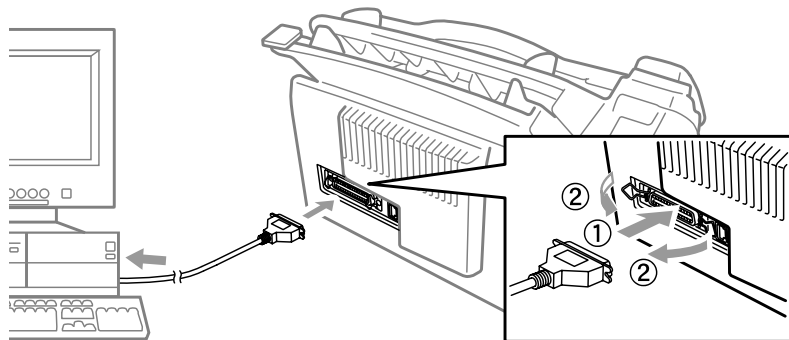
For Windows NT® Workstation Version 4.0 Users

Step 1. Check that your computer is turned on.

You must be logged on as the Administrator.

Step 2. Connect the MFC to your PC with the Parallel Cable.

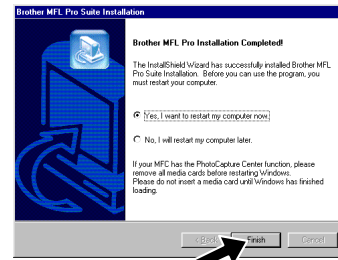
- Connect the parallel interface cable to the parallel interface port of the MFC and secure the wire clips.
- Connect the interface cable to the printer port of the computer and secure it with the two screws. For the location of your computer's parallel printer port, see the User's Guide for your computer.



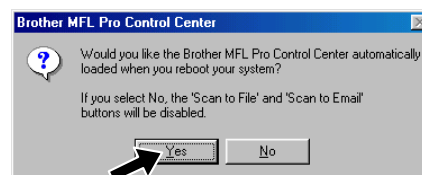
Step 3. Turn on the MFC by plugging in the power cord.

Step 4. Follow the instructions on the screen.

(Same step as for Windows® 95/98/98SE/Me/2000 Users **Step 3.**, 1-10)



- Select **Yes** to restart your computer, and then click **Finish**.



- Click **Yes** to have the Control Center loaded each time Windows is started. The Control Center will appear as an icon in the task bar. If you click **No**, the Scan keys on the MFC will be disabled.*3

The Brother PC fax, Printer and Scanner drivers have been installed and the installation is now complete.

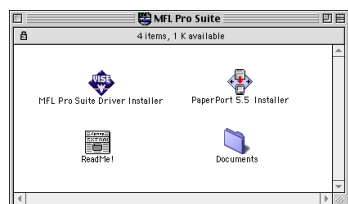
For Apple® Macintosh® QuickDraw® Driver for OS 8.6/9.0/9.0.4/9.1 Users

Step 1. Make sure your MFC power cord is unplugged and your Macintosh is turned on.

- Make sure you do NOT connect your MFC to your Macintosh

Step 2. Insert the CD-ROM into your CD-ROM drive.

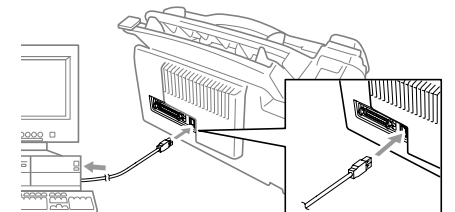
Installing MFL Pro Driver



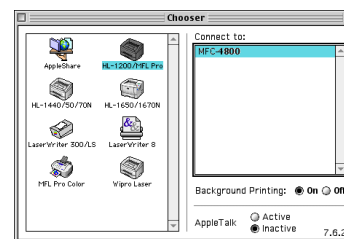
- When the window appears, double-click **MFL-PRO Suite Driver Installer** to install the printer and scanner drivers. After the installation is completed, the screen prompts you to restart your Macintosh.

Step 3. Restart your Macintosh so it can recognize the new driver.

Step 4. Connect the MFC to your Macintosh with the USB cable, and then turn on the MFC by plugging in the power cord.

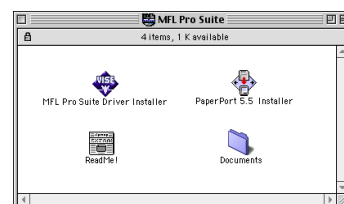


Step 5. Select the Printer.



- From the Apple menu, open the **Chooser**.
- Click to highlight the printer driver icon you installed. On the right side of the **Chooser**, select the printer to which you want to print. Close the **Chooser**.

Step 6. Install Paper Port.



- Double-click the **PaperPort®5.5 Installer**. *1
- Follow the instructions on the screen.

The Brother PC fax, Printer and Scanner drivers have been installed and the installation is now complete.

What is included on the CD-ROM

Windows®

You can get a variety of information from this CD-ROM



(For Windows®)

Install Software

You can install printer and scanner drivers and the various utility items.

On-Line Documentation

View the Owner's Manual and other documentation.

Brother Support

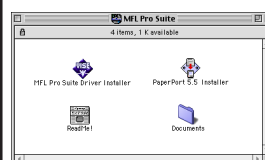
Get all contact you need if you have to get in touch with our Customer Service, or Brother Authorized Service Center.

Help

Helpful hints.

Macintosh®

You can get a variety of information from this CD-ROM



(For Macintosh®)

MFL Pro Driver Installer

You can install the printer and scanner drivers and the various utility items.

PaperPort 5.5 Installer

You can install a document management application used to view scanned documents.

ReadMe!

You can get important information and troubleshooting tips.

Documents

View the Owner's Manual and other documentations.