

Read the *Product Safety Guide* first, then read this *Quick Setup Guide* for the correct installation procedure.

The latest manuals are available at the Brother Solutions Center: solutions.brother.com/manuals

WARNING

WARNING indicates a potentially hazardous situation which, if not avoided, could result in death or serious injuries.

NOTE

NOTE specifies the operating environment, conditions for installation, or special conditions of use.

Unpack the machine and check the components

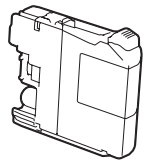


Watch our FAQ Videos for help with setting up your Brother machine. support.brother.com/videos



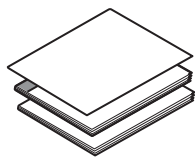
Visit the Brother support website support.brother.com

1. Remove the protective tape and film covering the machine and the LCD.
2. Make sure you have all components shown below.



Starter Ink Cartridges

- Black
- Yellow
- Cyan
- Magenta



**Quick Setup Guide
Basic User's Guide
Product Safety Guide**



Brother Installation Disc



Telephone Line Cord

WARNING

Plastic bags are used in the packing of your machine. Plastic bags are not toys. To avoid the danger of suffocation, keep these bags away from babies and children, and dispose of them correctly.

NOTE

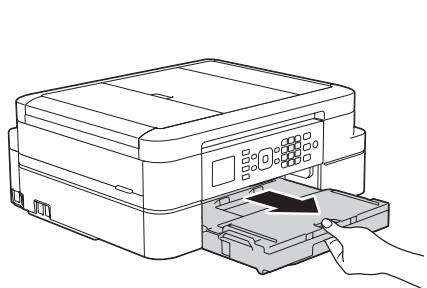
Manuals in Spanish for these models are available at support.brother.com. Manuales en Español para este modelo están disponibles en support.brother.com

- Save all packing materials and the box in case for any reason you must ship your machine.
- **Interface cables are not included. You must purchase the correct interface cable if you require one.**

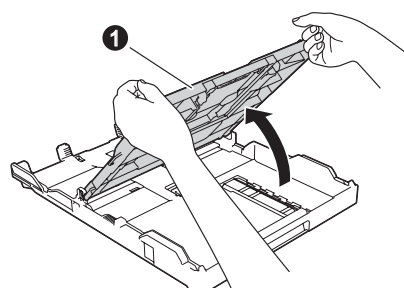
USB cable

We recommend using a USB 2.0 cable (Type A/B) that is no more than 6 feet (2 meters) long.

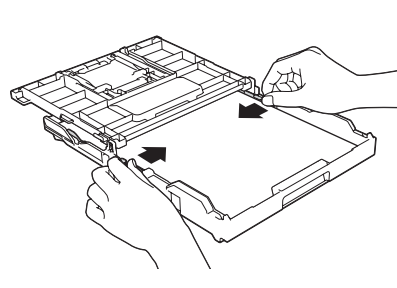
1 Load paper in the paper tray



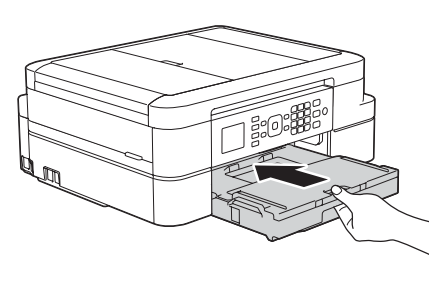
Pull the paper tray completely out of the machine.



Open the output paper tray cover ①.



Fan the paper well and load it in the tray, and then adjust the paper guides.



Close the output paper tray cover, and then slowly push the tray completely into the machine.

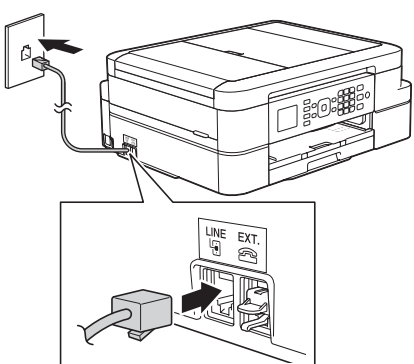


NOTE

Pull out the paper support ①, and unfold the paper support flap ② so that the printed pages do not fall.

2 Connect the telephone line cord

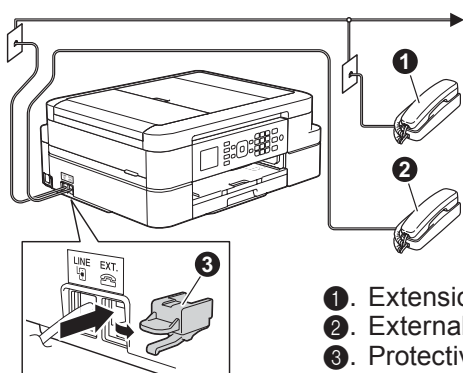
If you are not using your machine as a fax, go to 3



Connect the telephone line cord. Use the jack marked **LINE**.

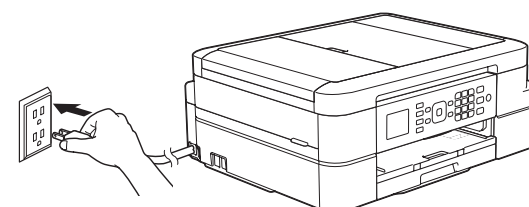
NOTE

If your machine is sharing one telephone line with an external telephone, connect it as shown below. Before you connect the external telephone, remove the white protective cap ③ from the **EXT.** jack of the machine.



- ①. Extension telephone
- ②. External telephone
- ③. Protective cap

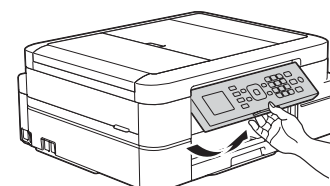
3 Connect the power cord



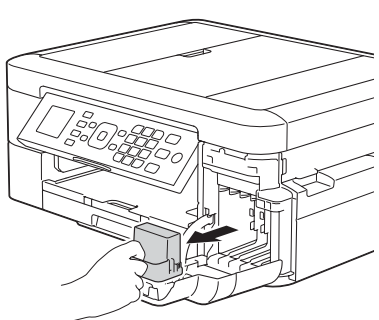
Connect the power cord. The machine will power on automatically.

NOTE

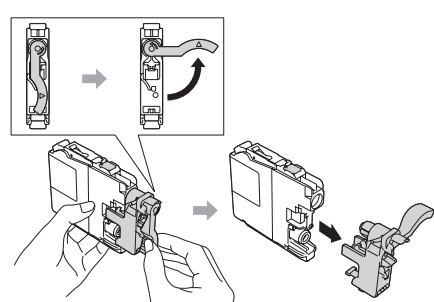
You can adjust the control panel angle to read the LCD more easily.



4 Install starter ink cartridges



Open the ink cartridge cover, and then remove the orange protective part from the machine.



Follow the on-screen instructions to install the ink cartridges. The machine will prepare the ink tube system for printing.

5 Machine settings

When the machine has finished the initial cleaning process, follow the on-screen instructions to configure the machine settings.

- Check print quality
- Set date and time
- Set Firmware Update Notice
- Print the installation sheet

6 Choose your language (if needed)

1. Press **Settings**.
2. Press **▲** or **▼** to select the following:
 - a. Select [Initial Setup]. Press **OK**.
 - b. Select [Local Language]. Press **OK**.
 - c. Select your language. Press **OK**.
3. Press **Stop/Exit**.

7 Choose the correct Receive Mode

If you are not using your machine as a fax, go to 9

The correct Receive Mode is determined by the external devices and telephone subscriber services (Voice Mail, Distinctive Ring, etc.) you will be using on the same line as the Brother machine. For more information, see *Receive Modes* in chapter 6 of the *Basic User's Guide*.

1. Press **Settings**.
2. Press **▲** or **▼** to select the following:
 - a. Select [Fax]. Press **OK**.
 - b. Select [Setup Receive]. Press **OK**.
 - c. Select [Receive Mode]. Press **OK**.
 - d. Press your preferred Receive Mode. Press **OK**.
3. Press **Stop/Exit**.

8 Set your Station ID

If you are not using your machine as a fax, go to 9

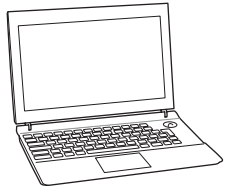
Store your name and fax number so the machine prints it on all outgoing fax pages. For more information, see *Enter Text on Your Brother Machine* in Appendix of the *Basic User's Guide*.

1. Press **Settings**.
2. Press **▲** or **▼** to select the following:
 - a. Select [Initial Setup]. Press **OK**.
 - b. Select [Station ID]. Press **OK**.
 - c. Enter your fax number (up to 20 digits) using the dial pad, and then press **OK**.
 - d. Enter your name (up to 20 characters) using the dial pad, and then press **OK**.
3. Press **Stop/Exit**.



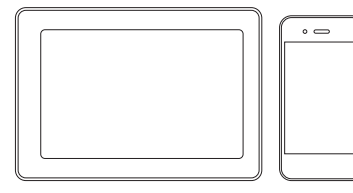
9 Select a device to connect to your machine

Computer



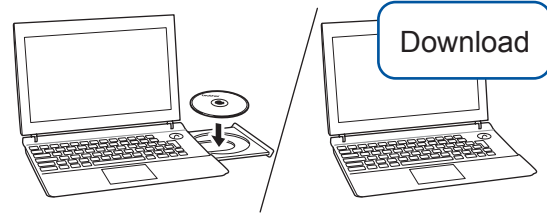
Go to **10** and follow the instructions.

Mobile Device



Go to **11** and follow the instructions.

10 Connect your computer



Put the installation disc into your CD/DVD drive, or download the Full Driver & Software Package at:

For Windows®: support.brother.com/windows
For Mac: support.brother.com/mac

If you are using a recently released operating system on your computer, visit the above websites for updated driver and software information.

Follow the on-screen instructions and prompts.

For Windows®:
If the Brother screen does not appear automatically, go to **Computer (My Computer/This PC)**. Double-click the CD/DVD-ROM icon, and then double-click **start.exe**.

For Mac:
For full driver functionality, we recommend choosing the **CUPS driver** when adding a printer.

Finished

Brother regularly updates firmware to add features and apply bug fixes. To check for the latest firmware, visit support.brother.com/up6.

Can't Connect? Check the following:

Wireless network

Restart your wireless access point/router (if possible).

USB connection

Disconnect the cable.

Restart your machine and computer, and then go to **10**

If still not successful, go to **11**

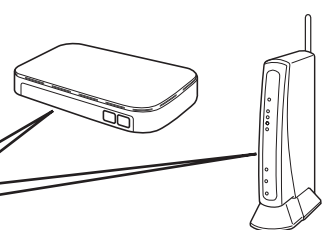
If still not successful, visit support.brother.com for FAQs and Troubleshooting.

11 Alternative wireless setup

Find your SSID (Network Name) and Network Key (Password) on your wireless access point/router and write them in the table provided below.

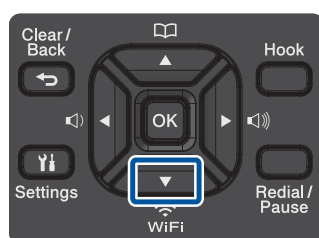
SSID (Network Name)	
Network Key (Password)	

SSID: XXXXXXXX
Network key: XXXX



If you cannot find this information, ask your network administrator or wireless access point/router manufacturer.

Go to your machine, and press ▼ to display the wireless settings menu, and then press ▲ or ▼ to select [Setup Wizard]. Press **OK**.



Select the SSID (Network Name) for your access point/router and enter the Network Key (Password).

When the wireless setup is successful, the LCD displays [Connected].

If setup is not successful, restart your Brother machine and your wireless access point/router, and repeat **11**

For Computer

Go to **10** to install software.

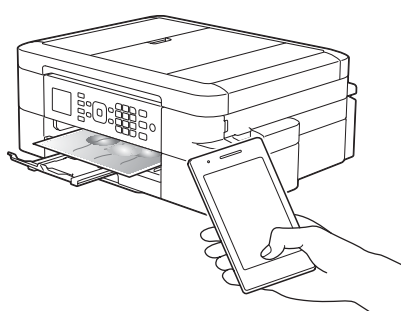
For Mobile Device

Go to **12** to install apps.

Even if you do not have a wireless access point/router, you can connect your device and your machine directly. For additional wireless network support, go to support.brother.com/wireless-support.

12 Print or scan using your mobile device

Your mobile device must be connected to the same wireless network as your Brother machine.



Download and install the Mopria® Print Service app from Google Play™ using your Android™ device.



Download and install our free application **Brother iPrint&Scan** from a mobile application store, such as the App Store, Google Play™ or Microsoft® Store using your mobile device.

Brother SupportCenter is a mobile app that provides the latest support information for your Brother product. Visit the App Store or Google Play™ to download.



Optional apps

You can print from and scan to your mobile device using various apps. (USA only) For more information on apps, visit www.brother-usa.com/connect. For instructions, see the *Online User's Guide*.



Additional Wireless Support: support.brother.com/wireless-support

For FAQs, Troubleshooting, and to download software and manuals, visit support.brother.com. For product specifications, see the *Online User's Guide*.

© 2017 Brother Industries, Ltd. All rights reserved.