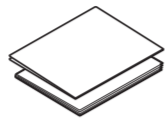


1 Unpack the machine and check the components

The components included in the box may differ depending on your country. Remove the protective tape and film covering the machine and the ink tank cover.



Starter Ink Bottles

- Black
- Yellow
- Cyan
- Magenta

**Quick Setup Guide
Product Safety Guide**

Brother Installation Disc



**USB Interface Cable
(For some countries)**



Telephone Line Cord

NOTE

- The *Reference Guide* for this model is available on the enclosed installation disc.
- Save all packing materials and the box in case you must ship your machine.
- **You must purchase the correct interface cable for the interface you want to use. A USB cable is included for some countries.**

USB cable

We recommend using a USB 2.0 cable (Type A/B) that is no more than 6 feet (2 meters) long.

Ethernet (Network) cable

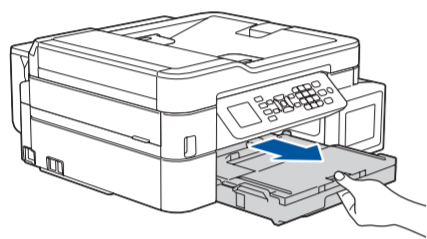
Use a straight-through Category 5 (or greater) twisted-pair cable for 10BASE-T or 100BASE-TX Fast Ethernet Network.



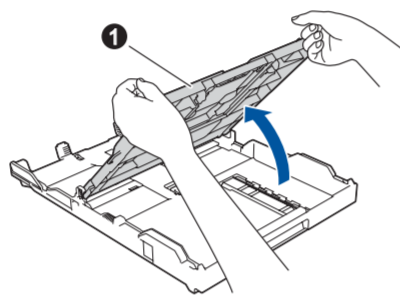
Watch our FAQ Videos for help with setting up your Brother machine. support.brother.com/videos

2 Load paper in the paper tray

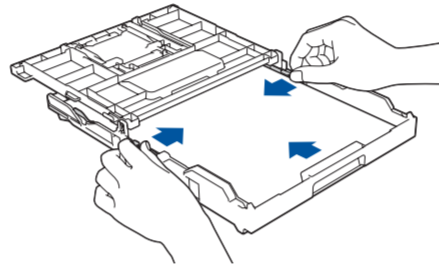
For more information about paper handling and sizes, see the *Reference Guide*.



Pull the paper tray completely out of the machine.

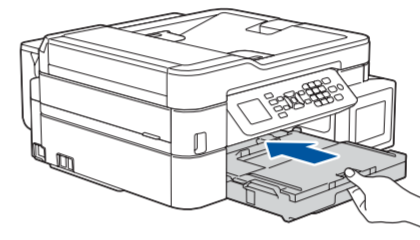


Open the output paper tray cover 1.

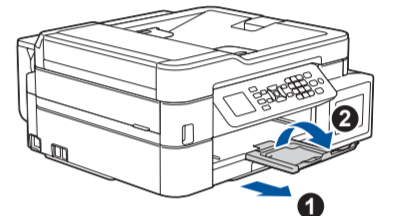


Adjust the paper guides.

Fan the paper well and load it in the tray.



Close the output paper tray cover, and then slowly push the tray completely into the machine.



NOTE

Pull out the paper support 1, and unfold the paper support flap 2 so that the printed pages do not fall.

3 Connect the power cord

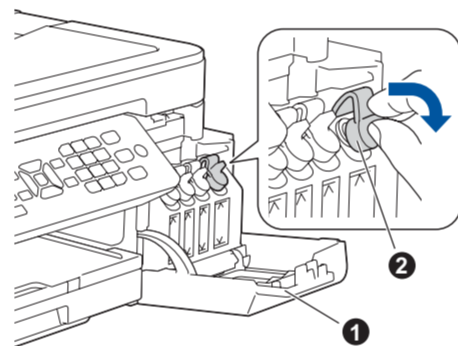
Connect the power cord and the machine powers on automatically. Follow the prompts displayed on the LCD to set the date and time.

4 Fill the ink tanks with the starter ink

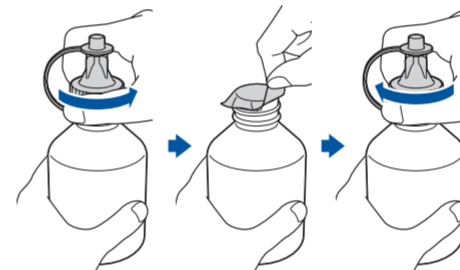
IMPORTANT

Check the ink bottle model name on the label. Incorrect ink may cause damage to the machine.

| | |
|--------------|-----------|
| BK (Dye) | CMY |
| BT5000CMY | BT5000CMY |
| BT5001CMY | BT5001CMY |
| BT5009CMY | BT5009CMY |
| DO NOT USE | |
| BK (Pigment) | |
| BT6000BK | |
| BT6001BK | |
| BT6009BK | |



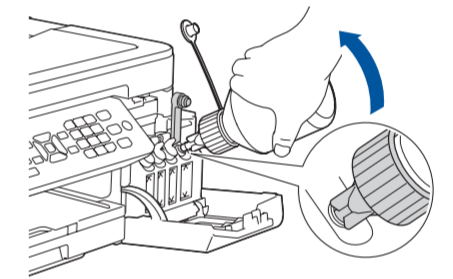
Open the ink tank cover 1 and pull the tab 2 downwards to open the cap of the ink tank.



Remove the cap and protective film from the ink bottle, and then replace the cap.

NOTE

Fasten the ink bottle cap tightly to avoid leakage.

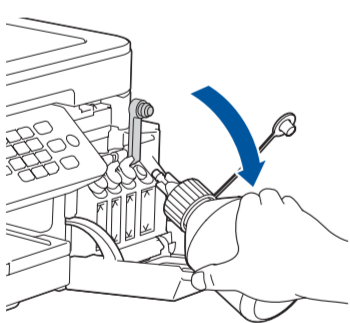


Remove the tip of the ink bottle. Insert the nozzle of the ink bottle firmly so that the ink does not spill. Fill the ink tank by gently squeezing the bottle as shown. Empty the entire bottle into the ink tank.

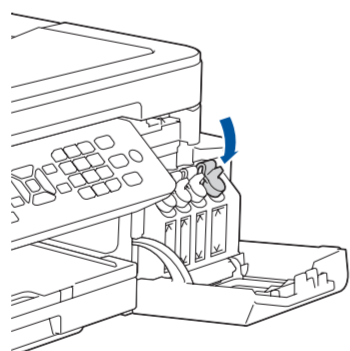
5 Machine settings

When the machine has finished the initial cleaning process, follow the steps on the LCD to configure the machine settings.

- Check print quality
- Configure the tray settings
- Set Firmware Update Notice
- Print the installation sheet



Point the nozzle upward so that the ink does not spill, and then remove the nozzle from the ink tank.



Push down on the cap of the ink tank to close it tightly. Repeat step 4 for the three other ink tanks.

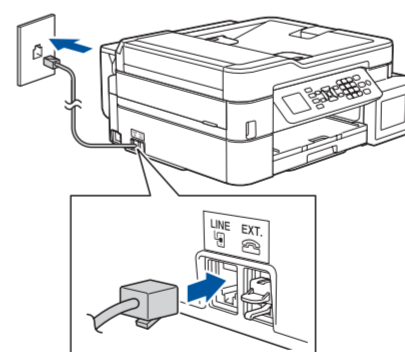
Close the ink tank cover. The machine will prepare the ink tube system for printing.

6 Connect the telephone line cord

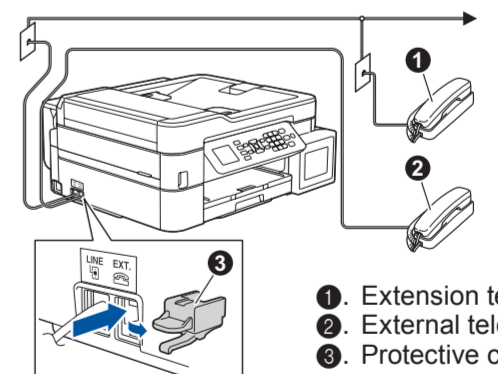
If you are not using your machine as a fax, go to 7.

NOTE

If you are sharing one telephone line with an external telephone, connect it as shown below. Before you connect the external telephone, remove the white protective cap 3 from the EXT. jack of the machine.



Connect the telephone line cord. Use the jack marked LINE.



- 1. Extension telephone
- 2. External telephone
- 3. Protective cap

7 Select your language (if needed)

1. Press **Ajustes** (Settings).
2. Press **▲** or **▼** to select the following:
 - a. Select [Conf. inicial] (Initial Setup), and then press **OK**.
 - b. Select [Sel. idioma] (Local Language), and then press **OK**.
 - c. Select your language, and then press **OK**.
3. Press **Detener/Salir** (Stop/Exit).

8 Select the correct Receive Mode

If you are not using your machine as a fax, go to 10.

The correct Receive Mode is determined by the external devices and telephone subscriber services (Voice Mail, Distinctive Ring, etc.) you will be using on the same line as the Brother machine. For more information, see *Choose the Correct Receive Mode* in the *Reference Guide*.

1. Press **Ajustes** (Settings).
2. Press **▲** or **▼** to select the following:
 - a. Select [Fax], and then press **OK**.
 - b. Select [Setup Receive], and then press **OK**.
 - c. Select [Receive Mode], and then press **OK**.
 - d. Select your Receive Mode, and then press **OK**.
3. Press **Detener/Salir** (Stop/Exit).

9 Set your Station ID

If you are not using your machine as a fax, go to 10.

Store your name and fax number so the machine prints it on all outgoing fax pages. For more information, see *Enter Text on Your Brother Machine* in the *Online User's Guide*.

1. Press **Ajustes** (Settings).
2. Press **▲** or **▼** to select the following:
 - a. Select [Initial Setup], and then press **OK**.
 - b. Select [Station ID], and then press **OK**.
 - c. Select [Fax], and then press **OK**.
3. Enter your fax number (up to 20 digits), and then press **OK**.
4. Enter your name (up to 20 characters), and then press **OK**.
5. Press **Detener/Salir** (Stop/Exit).

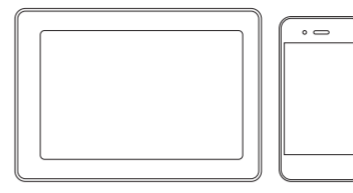
10 Select a device to connect to your machine

Computer



Go to **11** and follow the instructions.

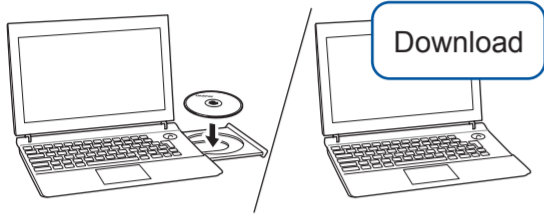
Mobile Device



Go to **12** and follow the instructions.

11 Connect your computer

Brother regularly updates firmware to add features and apply bug fixes. To check for the latest firmware, visit support.brother.com/up4.



Follow the on-screen instructions and prompts.

Put the installation disc into your CD/DVD drive, or download the Full Driver & Software Package at:

For Windows®: support.brother.com/windows
For Mac: support.brother.com/mac

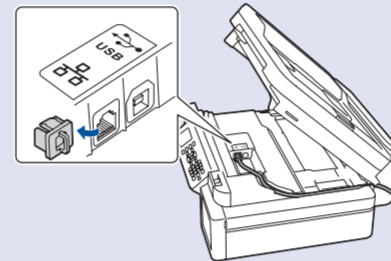
If you are using a recently released operating system on your computer, visit the above websites for updated driver and software information.

For Windows®:
If the Brother screen does not appear automatically, go to **Computer (My Computer/This PC)**. Double-click the CD/DVD-ROM icon, and then double-click **start.exe**.

For Mac:
For full driver functionality, we recommend choosing the **CUPS driver** when adding a printer.

For Wired Network Connection and USB Connection:

Locate the correct port (based on the cable you are using) inside the machine as shown.



Finished

Can't Connect? Check the following:

Wireless network

Restart your wireless access point/router (if possible).

Wired network
USB connection

Disconnect the cable.

Restart your machine and computer, and then go to **11**.

If still not successful, go to **12**.

If still not successful, visit support.brother.com for FAQs and Troubleshooting.

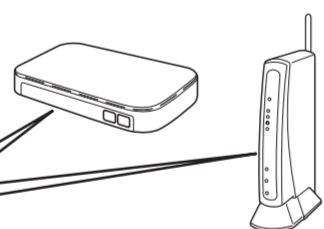
12 Alternative wireless setup

Even if you do not have a wireless access point/router, you can connect your device and your machine directly. For additional wireless network support, go to support.brother.com/wireless-support.

Find your SSID (Network Name) and Network Key (Password) on your wireless access point/router and write them in the table provided below.

| | |
|------------------------|--|
| SSID (Network Name) | |
| Network Key (Password) | |

SSID: XXXXXXXX
Network key: XXXX



If you cannot find this information, ask your network administrator or wireless access point/router manufacturer.

- Go to your machine, and press **WiFi** on the panel. Press **OK** to select [Setup Wizard]. The [Enable WLAN?] message appears on the LCD.
- Press **▶** to select Yes.

Select the SSID (Network Name) for your access point/router and enter the Network Key (Password).

When the wireless setup is successful, the LCD displays [Connected].

If setup is not successful, restart your Brother machine and your wireless access point/router, and repeat **12**.

For Computer

Go to **11** to install software.

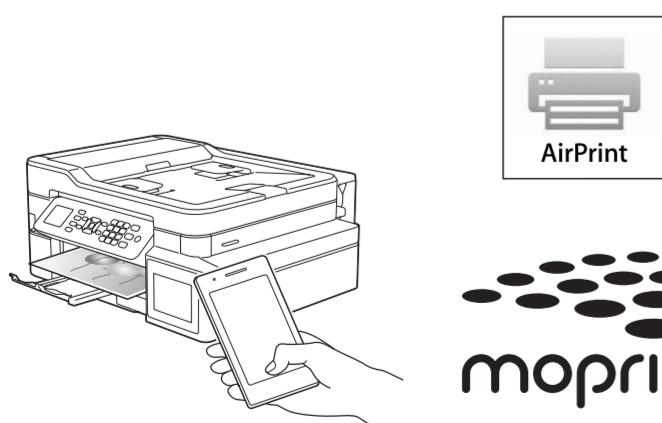
For Mobile Device

Go to **13** to install apps.

13 Print or scan using your mobile device

Your mobile device must be connected to the same wireless network as your Brother machine.

Brother SupportCenter is a mobile app that provides the latest support information for your Brother product. Visit the App Store or Google Play™ to download.



AirPrint is available for all supported iOS devices including iPhone, iPad, and iPod touch. You do not need to download any software to use AirPrint. For more information, see the *Online User's Guide*.



Download and install the Mopria® Print Service app from Google Play™ using your Android™ device.



Download and install our free application **Brother iPrint&Scan** from a mobile application store, such as the App Store, Google Play™, or Microsoft® Store using your mobile device.

Optional apps

You can print from and scan to your mobile device using various apps. For instructions, see the *Online User's Guide*.



Additional Wireless Support: support.brother.com/wireless-support

For FAQs, Troubleshooting, and to download software and manuals, visit support.brother.com. For product specifications, see the *Online User's Guide*.

© 2017 Brother Industries, Ltd. All rights reserved.